

# For Sale

Asking Price: €895,000

Sherry  
FitzGerald  
O'Neill



Slinneadoir, Derrycreha, Glengarriff,  
Co. Cork, P75 XF58

BER C1

[sherryfitz.ie](http://sherryfitz.ie)





Slinneadóir is a superb bungalow residence, with eco heated indoor swimming pool, gym, sauna and orangery greenhouse on 1 acre approximately of landscaped gardens. The property commands a spectacular elevated position with panoramic coastal views that encompass Bantry Bay, Whiddy Island and the Sheep's Head Peninsula.

The residence and swimming pool complex benefit from 323.3 sq. m. (3,480 sq. ft.) approximately of space. The house is carefully crafted into a home of unique character and enjoys a superb location close to the picturesque West Cork village of Glengarriff.

The accommodation includes entrance hallway, kitchen/dining room, living room, laundry room, a generous master suite with walk-in wardrobe and bathroom. There are 3 further spacious double bedrooms and a guest bathroom. The front rooms benefit from large picture windows, taking in the stunning coastal views.

The swimming pool complex comprises a 10 meter indoor pool heated by a solar eco heating system, accompanied by a gym and snooker area, sauna and shower room. Upstairs, there is ample storage in the attic space.

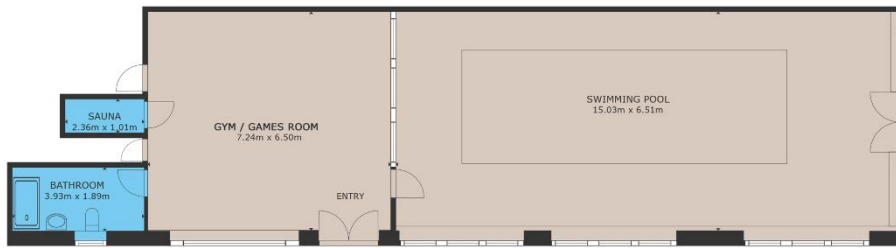
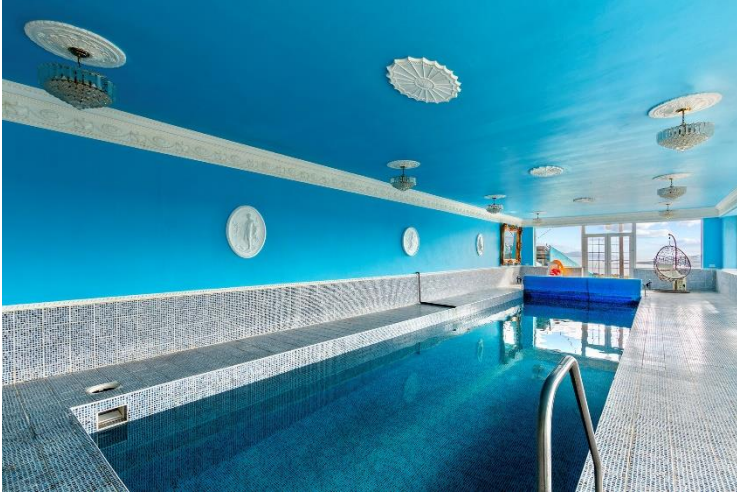
The property is accessed via electric gates from the main road. The buildings sit on a generous 1 acre site approx. of magnificently landscaped grounds and paved patio areas. The site is adorned with mature specimen trees and shrubs. The orangery greenhouse and various fruit and vegetable areas add to the ambience of this fine property.

Slinneadóir has its own water supply and is fitted with oil-fired central heating and solar PV panels.

The property is convenient to Glengarriff, whilst the market town of Bantry is a 15 minute drive. Cork and its airport are both easily accessible in just over an hour's drive.

Glengarriff is a popular residential and holiday village that is renowned for its natural beauty, magnificent harbour at the head of Bantry Bay, ancient woodlands with walks and trails and the magnificent Caha Mountains. The towns of Bantry, Castletownbere and Kenmare are all within a 30 minute drive.





SWIMMING POOL & GAMES ROOM



GROSS INTERNAL AREA  
TOTAL: 323.90 m<sup>2</sup>  
SIZES AND DIMENSIONS ARE APPROXIMATE, ACTUAL MAY VARY.





**NEGOTIATOR**

Olivia Hanafin  
Sherry FitzGerald O'Neill  
Wolfe Tone Square,  
Bantry, Co Cork  
T: 027 31030  
E: info@sfoneill.ie

**VIEWINGS**

Strictly By Appointment Only

**ENERGY RATING**

BER: C1  
Cert No.: 117319897  
EPI: 169.7 kWh/m<sup>2</sup>/yr

[sherryfitz.ie](http://sherryfitz.ie)  
[sfoneill.ie](http://sfoneill.ie)  
[myhome.ie](http://myhome.ie)  
[daft.ie](http://daft.ie)  
[progoluxury.com](http://progoluxury.com)

**CONDITIONS TO BE NOTED:** A full copy of our general brochure conditions can be viewed on our website at <http://www.sherryfitz.ie/terms>, or can be requested from your local Sherry FitzGerald office. We strongly recommend that you familiarise yourself with these general conditions. While care has been taken to ensure that information contained in Sherry FitzGerald publications is correct at the time of publication, changes in circumstances after the time of publication may impact on the accuracy of this. PSRA Registration No. 004158