

For Sale

Asking Price: €1,300,000

Sherry
FitzGerald
O'Neill



Brylands, Inchintaggart,
Glengarriff, Co Cork, P75 NA06.

BER E2

sherryfitz.ie



A WATERFRONT HAVEN IN WEST CORK

Nestled along one of Ireland's most picturesque shorelines, Brylands is a peaceful and private coastal residence, set within approximately 4.5 acres of beautiful woodland and naturally landscaped grounds. Positioned to take full advantage of its setting, the home enjoys sweeping views over an inlet of Glengarriff Harbour and the renowned Garnish Island, offering an exceptional living experience in a truly idyllic location.

The property benefits from extensive shoreline frontage, complete with a running mooring, making it particularly attractive to boating and sailing enthusiasts. The residence is approached via a winding private driveway that leads through a beautifully tree-lined entrance, opening out to reveal this secluded retreat. Mature gardens surround the home, complementing the dramatic views and enhancing the calm, natural atmosphere that defines Brylands.

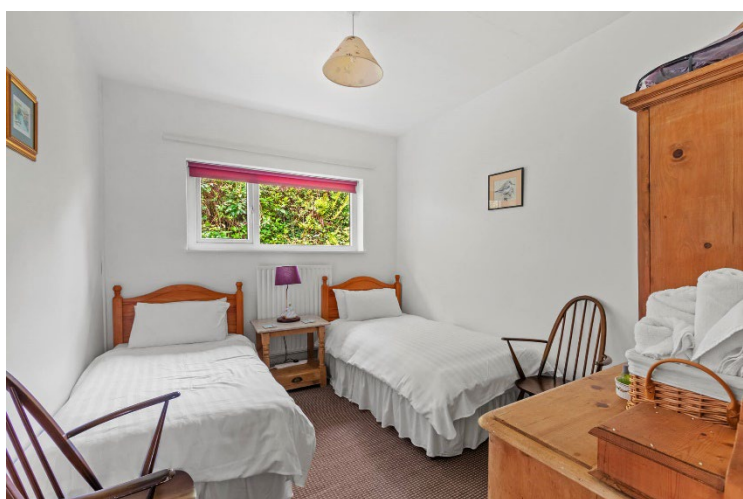
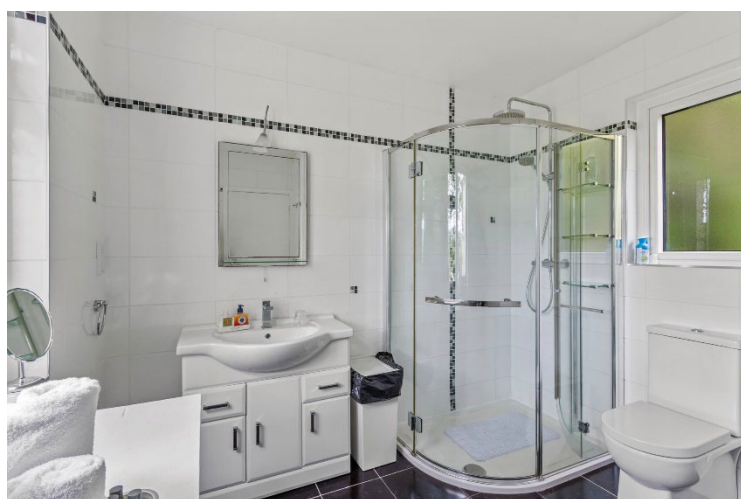
Designed to embrace its coastal setting, the residence features large picture windows and doors that flood the interiors with natural light and frame the breathtaking sea views. A balcony patio area just off the lounge provides the perfect spot to relax or entertain overlooking the renowned harbour. The layout includes an entrance porch, bright kitchen, exceptionally spacious lounge and dining area with double doors opening onto the patio and a feature open fireplace. There is a generous master bedroom with en-suite, two guest bedrooms, a family bathroom and a utility room, all well-proportioned and thoughtfully arranged.

Additional features include PVC double-glazed windows, oil-fired central heating, and rich hardwood flooring in the living area, all combining comfort with understated elegance. The shoreline bordering the gardens are particularly impressive, with generous frontage that invites peaceful walks, sea air, and uninterrupted views.



Located just 2 km from the vibrant village of Glengarriff, Brylands offers the best of both worlds: peaceful seclusion on the water's edge with easy access to local shops, restaurants, and amenities. The property is a convenient 15-minute drive from Bantry and just over an hour from Cork City and its international airport, making it a perfectly accessible and extraordinarily peaceful home.

Brylands represents a rare opportunity to acquire a waterfront property in this highly sought-after West Cork harbour setting.





GROSS INTERNAL AREA

TOTAL : 113.68m²

Whilst every attempt has been made to ensure the accuracy of the floor plan contained here, measurements of doors, windows, rooms and any other items are approximate and no responsibility is taken for any error, omission, or misstatement. This plan is for illustrative purposes only and should be used as such by any prospective purchaser.



**Sherry
FitzGerald**
O'Neill

NEGOTIATOR

Olivia Hanafin
Sherry FitzGerald O'Neill
Wolfe Tone Square
Bantry
Co Cork
T: 027 31030
E: info@sfoneill.ie

VIEWINGS

Strictly By Appointment Only

ENERGY RATING

BER: E2
Cert No.: 118682533
EPI: 366.92 kWh/m²/yr

sherryfitz.ie
sfoneill.ie
myhome.ie
daft.ie
propgoluxury.com

CONDITIONS TO BE NOTED: A full copy of our general brochure conditions can be viewed on our website at <http://www.sherryfitz.ie/terms>, or can be requested from your local Sherry FitzGerald office. We strongly recommend that you familiarise yourself with these general conditions. While care has been taken to ensure that information contained in Sherry FitzGerald publications is correct at the time of publication, changes in circumstances after the time of publication may impact on the accuracy of this. PSRA Registration No. 004158