

For Sale

Asking Price: €325,000

**Sherry
FitzGerald**
O'Neill



Droumsullivan, Bantry, Co. Cork.
P75 P682.

BER C3

sherryfitz.ie



Attractive 5 bedroom dormer bungalow residence on 0.61 acres approx., located 5 miles approximately from the town of Bantry in West Cork. The bungalow enjoys a sheltered sunny aspect.

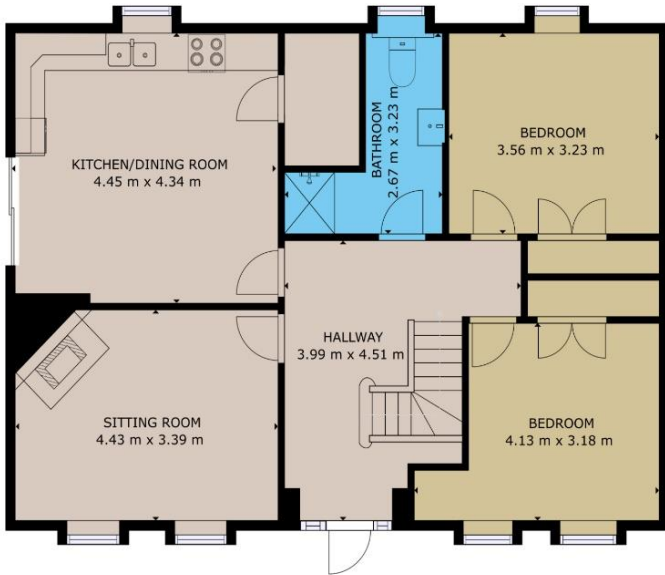
The many enhancing features of this excellently located home include 1,380 sq. ft. approx. of living space, pvc double glazed windows, oil fired central heating, stove set in stone fire surround in living room, fitted kitchen units and 2 bathrooms.

The accommodation includes entrance hall, living room, kitchen / dining room, small conservatory off the kitchen, 2 bedrooms and bathroom on the ground floor. There are 3 bedrooms and a bathroom upstairs.

There are 2 useful workshops / sheds located to the rear of the bungalow. The grounds are partially landscaped with entrance walls and pillars, tarmac driveway and plenty of trees and shrubs.

The property is an ideal family home set in a convenient location, north west of Bantry town.





GROUND FLOOR



FIRST FLOOR

GROSS INTERNAL AREA

TOTAL : 128.19m²

Whilst every attempt has been made to ensure the accuracy of the floor plan contained here, measurements of doors, windows, rooms and any other items are approximate and no responsibility is taken for any error, omission, or misstatement. This plan is for illustrative purposes only and should be used as such by any prospective purchaser.



NEGOTIATOR
Olivia Hanafin
Sherry FitzGerald O'Neill
Wolfe Tone Square
Bantry,
Co Cork
T: 027 31030
E: info@sfoneill.ie

VIEWINGS
Strictly By Appointment Only

ENERGY RATING
BER: C3
Cert No.: 117785121
EPI: 204.95 kWh/m²/yr

sherryfitz.ie
sfoneill.ie
myhome.ie
daft.ie

CONDITIONS TO BE NOTED: A full copy of our general brochure conditions can be viewed on our website at <http://www.sherryfitz.ie/terms>, or can be requested from your local Sherry FitzGerald office. We strongly recommend that you familiarise yourself with these general conditions. While care has been taken to ensure that information contained in Sherry FitzGerald publications is correct at the time of publication, changes in circumstances after the time of publication may impact on the accuracy of this. PSRA Registration No. 004158