

For Sale

135 Abbeyville, Galway Road,
Roscommon Town. F42 Y757
4 Bedrooms| Semi-Detached

BER B3



Price: €265,000

No.135 is a New Four Bedroom Residence with an Internal Floor Area of c.1,453 Sq. Foot with spacious living accommodation throughout, located in the much sought after 'Abbeyville' development of Luxury Homes on the Galway Road in Roscommon Town.

Accommodation includes ground floor: reception hallway, sitting room, dining room, kitchen, utility with WC off and first floor: landing, bedrooms four in all with one en-suite and bathroom

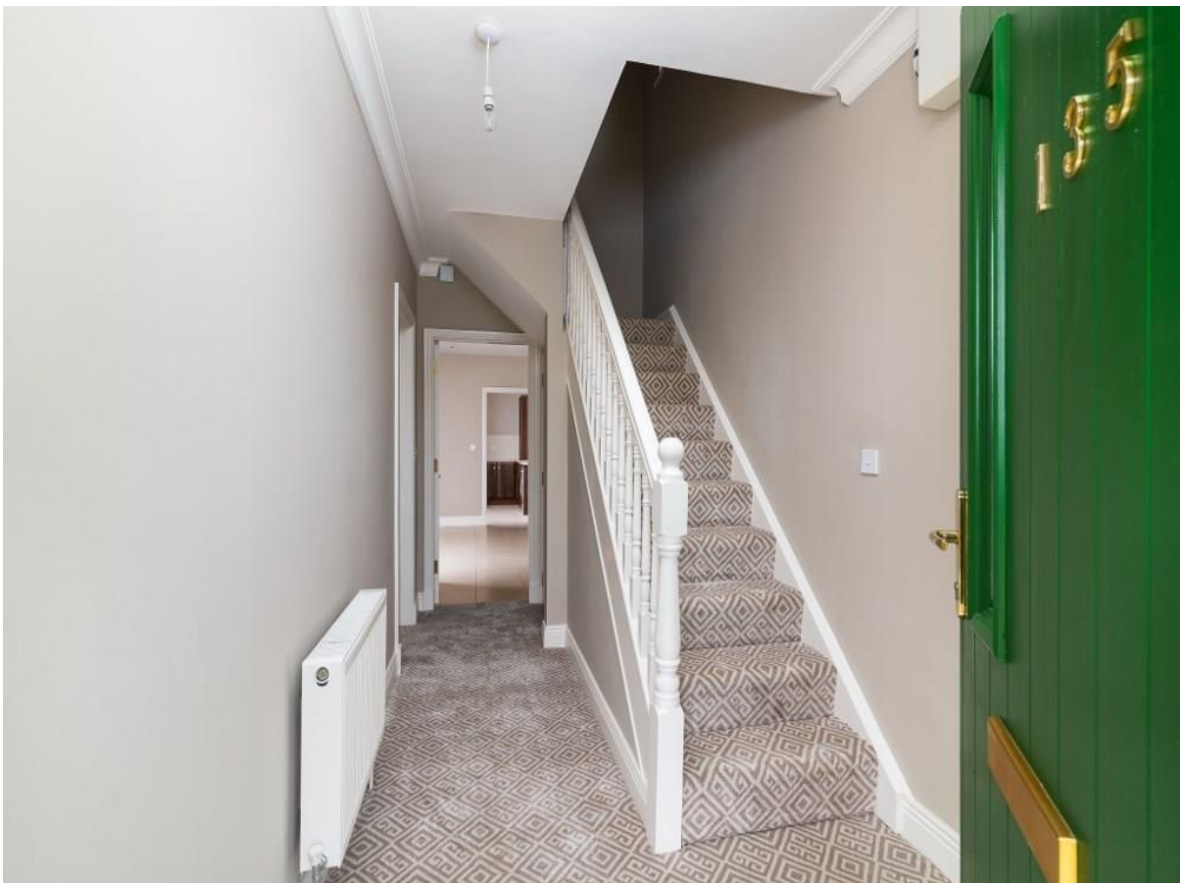
**For further details and viewing,
contact Connaughton Auctioneers on 090-6663700 or
Email: info@connaughtonauctioneers.ie**

Roscommon Town is a popular commuter town to nearly large urban centres including Athlone (20 mins), Longford (20 mins) with Sligo and Galway City (60 mins). The town has free parking, excellent primary and secondary schools, is located on the Dublin to Westport railway line (station within walking distance of Abbeyville) and all large nationwide supermarkets and outlets.

First time buyers can avail of a tax rebate of 10% of the purchase price for this property (See Help to Buy Scheme for First Time Buyers). Viewing of this residence, which is fully complete and ready for occupancy, comes with High Speed Broadband.

OTHER FEATURES

- High Speed Broadband
- Gas Fired Central Heating
- Cobble Lock Driveway to Front
- Laid Lawn to rear
- Finished to a very high standard
- Qualifies for 'Help to Buy' Scheme
- Overlooking Green Area





135 Abbeyville, Galway Road, Roscommon Town. F42 Y757





135 Abbeyville, Galway Road, Roscommon Town. F42 Y757



135 Abbeyville, Galway Road, Roscommon Town. F42 Y757



135 Abbeyville, Galway Road, Roscommon Town. F42 Y757



135 Abbeyville, Galway Road, Roscommon Town. F42 Y757



135 Abbeyville, Galway Road, Roscommon Town. F42 Y757



135 Abbeyville, Galway Road, Roscommon Town. F42 Y757



135 Abbeyville, Galway Road, Roscommon Town F42 Y757

Approx. floor area
135m² / 1453ft²

4 3 2 1

DISCLAIMER: Floor plan measurements are approximate and are for illustrative purposes only. Floor plans are intended to give a general indication of the proposed layout only. The dimensions are not intended to form part of any contract or warranty.

