

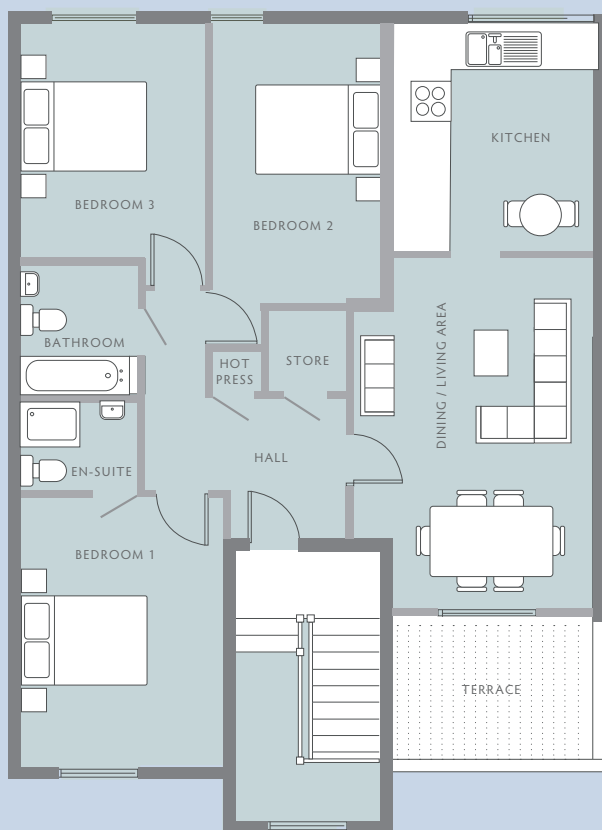


SOME LOCAL AMENITIES

Portmarnock Beach
Malahide Village
M50
Dublin Airport
Port Tunnel
New Primary School opened 2019
Multiple Crèches in Estate and Area
Local Late Night Pharmacies
Kinsealy Medical Centre
VHI Swiftcare Clinic
Airside Retail Park
Malahide Castle
Pavilion Shopping Centre
Airside Retail Park
Walking Distance:
Insomnia Cafes
Eddie Rockets
Grafton Barbers
Hot Yoga Dublin & Yoga Next Door
Énergie Fitness
Avoca Restaurant
Hilton Hotel
Noble House Restaurant
Tesco
Clarehall Shopping Centre

53 Belmayne Park North Outside Area





3 BEDROOM HOME

This stunning second floor (top floor) home benefits from a private, own door entrance and an enviable position overlooking Belmayne neighborhood park. The location is ideal being 6 minute drive from Malahide village and 7 minute drive to Dublin airport. It is 1 minute walk to new primary school, that has just been opened. Some features include a large terrace with spacious living room with fully fitted kitchen. Three large bedrooms, master bedroom with ensuite. A large attic similar to the overall floor area and parking included.

LIVING/DINING	25.6M ²
KITCHEN	11.1M ²
BEDROOM 1	15.1M ²
BEDROOM 2	13.3M ²
BEDROOM 3	11.7M ²

FLOOR AREA: 100M² / 1,085 SQ. FT

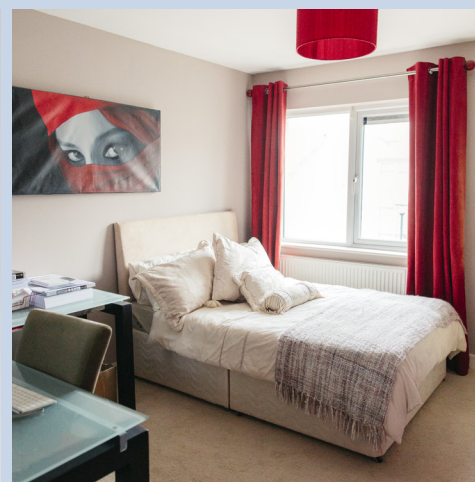
*Floor plans not to scale. For indicative purposes only. Stairwell entrance, terrace and attic sq.ft is not indicated in the sq.ft total above and is in addition to the indicated measurements.

53 Belmayne Park North Location





53 Belmayne Park North Interior





53 Belmayne Park North Interior

