

FOR SALE

AMV: €325,000

File No.E200.CWM



“The Bungalow”, 71 Cluain Dara, Clonard, Wexford Y35 C7PY

- Built in 2006 this detached bungalow comes to market in exceptional conditions including a newly fitted kitchen.
- Convenient setting, close to Wexford Town and all amenities on your doorstep.
- Three bedrooms extending to c. 116 sq.m.
- Southerly aspect in the rear garden which is private and enclosed.
- Accommodation in brief comprises of a sitting room with open fire, kitchen/ dining with a refurbished kitchen, a utility room. Three bedrooms including a master ensuite.
- To arrange a suitable viewing time, contact the sole selling agents only, Kehoe & Assoc. at 053 9144393



**Kehoe
& ASSOC.**



“The Bungalow”, 71 Cluain Dara, Clonard, Wexford Y35 C7PY

Overlooking the common green area this detached bungalow residence enjoys a convenient setting close to Wexford Town. All amenities are on your doorstep including schools, shops, pubs, pharmacies, etc. “The Bungalow” at 71 Cluain Dara is a three-bedroom, one bathroom property offering bright, spacious, and well laid out accommodation. The kitchen was newly fitted in 2020 with all electrical appliances including fridge freezer, oven, electric hob, extractor fan, dishwasher, and microwave. There is a separate utility room with ample storage space.

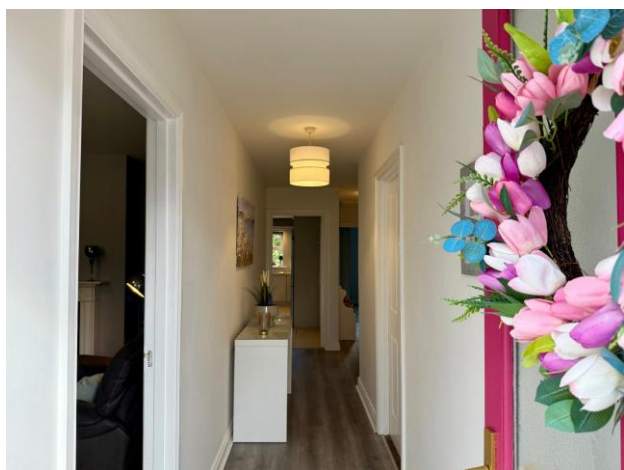
The property benefits from a large, private, enclosed rear garden laid out in lawn with a southerly aspect. It is ready for immediate occupancy and if you are searching for houses in Wexford, this is an opportunity not to be missed. It is an ideal first-time buyer’s home or indeed investors seeking a home in a highly lettable location.

Early viewing is highly recommended, to arrange a suitable viewing time, please contact the sole selling agents, Kehoe & Assoc., at 053 9144393.



ACCOMMODATION

Entrance Hall	9.10m (max) x 2.27m (max)	Timber laminate flooring throughout, electric fuse board.
Sitting Room	4.70m x 3.97m	Timber laminate flooring, open fireplace with cast iron insert and timer surround, tv points an electrical points throughout, large window overlooking front garden and driveway.
Kitchen/Dining/Living Area	5.78m x 5.08m	Tiled flooring throughout, the ideal living space corner flowing into the dining space with island and fully fitted kitchen newly installed including all appliances, ample worktops space, island with breakfast bar counter and further storage underneath. <i>Appliances include:</i> Samsung fridge freezer, Whirlpool double oven, Whirlpool microwave, Nordmende four ring electric hob with extractor fan overhead, stainless steel sink and drainer under window overlooking rear gardens and Whirlpool dishwasher, chrome plug fitting throughout. Sliding door leading out to the closed private rear garden, which enjoys morning and afternoon light throughout the day and evening light to the rear.
<i>Off kitchen to:</i> Utility	3.08m x 1.60m	Lino flooring throughout. Plumbed for washing machine and space for dryer. Window overlooking side entrance.
Hot-press		Insulated water tank and open shelves.









ACCOMMODATION

Master Bedroom	4.49m(max) x 3.98m	Timber laminate flooring throughout, two window overlooking front gardens, tv point and electrical points.
En Suite	2.86m x 0.86m	Tiled flooring, enclosed shower with Triton T90 sr with floor to ceiling tiled surround, recently refurbished, w.h.b. with tiled splashback, mirror and lighting overhead and w.c.
Bedroom 2	4.20m x 3.08m	Timber laminate flooring, double bay built in wardrobes with ample storage space, open shelves and rails, large window overlooking private rear garden with palm tree view, electric points and tv point, open shelves to walls.
Bedroom 3	2.39m x 2.88m	Timber laminate flooring, window overlooking side entrance, tv point and electrical points.
Family Bathroom	2.88m x 1.98m	Lino flooring, bath with half wall tile surround and wall mounted shower head, w.h.b with tiled splashback, mirror and lighting overhead and w.c.

Total Floor Area: c. 116 sq.m / 1,248 sq.ft





Features

- Detached bungalow
- Three bedrooms and one bathroom
- Extending to c. 116 sq.m
- Built in 2006 carefully maintained by the same owner since then
- Newly fitted kitchen and appliances

Outside

- Southerly aspect in the rear garden
- A private and enclosed rear garden
- Garden in lawn to front and rear
- Garden shed

Services

- Mains water
- Mains drainage
- Electric heating
- Open fire in Sitting Room
- Fibre Broadband

Viewing: Viewing is strictly by prior appointment and to arrange a suitable viewing time contact the sole selling agents, Kehoe & Assoc. at 053 9144393.

Directions: Eircode: Y35 C7PY





Building Energy Rating (BER): C2 BER No. 118723311
Energy Performance Indicator: 180.83 kWh/m²/yr

VIEWING: Strictly by prior appointment with the sole selling agents.

Sales Agent
CATRIONA MURPHY
087 2427525
Email: catriona@kehoeproperty.com



Kehoe & Assoc.,
Commercial Quay,
Wexford
053 9144393
www.kehoeproperty.com
Email: sales@kehoeproperty.com



These particulars are issued for guidance purposes only and do not form part of any contract and are issued on the understanding that all negotiations regarding this property will be conducted through this firm. PRSA No. 002141