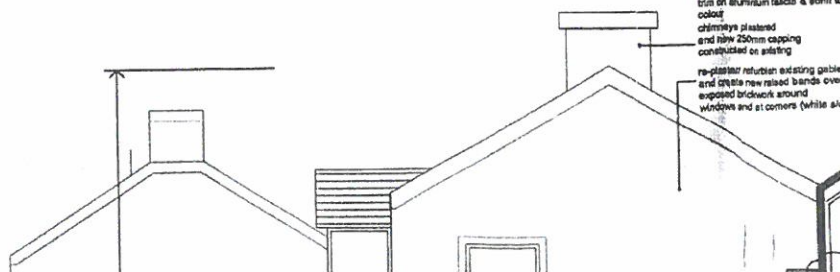


lower ground floor plan

1:100

600mm x 300mm logal bristons & accordance with I.C.P. 2:1992 on 50mm x 25mm battens @ 245mm confirmed by manufacturers on pitched A1 or similar approved roof material built to engineering design T10 125mm Kingspan foil to both between rafters in pitched roof. Proprietary roof vents are required. Dry verge system or similar appropriate on aluminium fascia & eaves to colour. chimneys plastered and new 250mm capping constructed on existing re-plastering existing gable and create new raised bands over exposed brickwork around windows and at corners (white sk).



ground floor.

Architectural floor plan of the ground floor of a building. The plan shows various rooms including offices (1-6), a staff room, a solicitors office, a waiting area, a lobby, a reception area, a stairwell, a lift shaft, a W.C., and a disabled person's refuge area. The plan is annotated with dimensions, room numbers, and symbols for doors, windows, and furniture. A red line is drawn across the plan, possibly indicating a section line. The plan is oriented with a north arrow pointing towards the top right.

NET

tot.

15 m²

10 m²

1 m²

0 m²

ground floor plan

total

