

Superbly located 2 bedroom extended terraced house

10 Cahill Ville, St Luke's, Cork City. T23 DYF2

savills



Superbly located 2 bedroom extended terraced house

10 Cahill Ville, St Luke's, Cork City. T23 DYF2



Superbly located 2 bedroom extended terraced house

10 Cahill Ville, St Luke's, Cork City. T23 DYF2



About this property

Savills is delighted to present Number 10 Cahill Ville, a charming two-bedroom terraced property featuring a bright and thoughtfully designed rear extension.

As you step inside, you are welcomed by a warm and inviting hallway that opens beautifully to a large open plan dining and living room. This room is awash with cosy features such as timber flooring, ceiling panelling and exposed rafters. A lovely double opening provides access to the kitchen. The kitchen is nicely laid out and from here you will find the main bathroom. Upstairs you will find two double bedrooms. To the front is a most impressive room running the full width of the property and featuring two large windows providing stunning elevated city views. The rear bedroom is equally impressive with a superb vaulted ceiling running all the way to the roof ridge.

Outside 10 Cahill Ville continues to impress. There is a charming paved patio directly after stepping out of the kitchen. It is well proportioned and ideal for sitting out and entertaining. Beyond the patio is a low maintenance gravelled section followed by a level lawn. A timber shed is at the rear of the property.

St. Luke's is one of Cork City's most sought-after residential areas. Just a short walk from here is St. Luke's Cross, a bustling hub with a range of local businesses, including a deli, café, and the well-loved John Henchy & Sons pub. A further stroll brings you directly into the heart of Cork City, passing through the revitalized Victorian Quarter along MacCurtain Street, now a prime destination for some of the city's finest restaurants and bars.

Number 10 Cahill Ville is sure to impress on the open market and is ideally suited for first time buyers, investors and those seeking to relocate to this fantastic location.

Don't miss out, schedule your private viewing today!

Superbly located 2 bedroom extended terraced house

10 Cahill Ville, St Luke's, Cork City. T23 DYF2



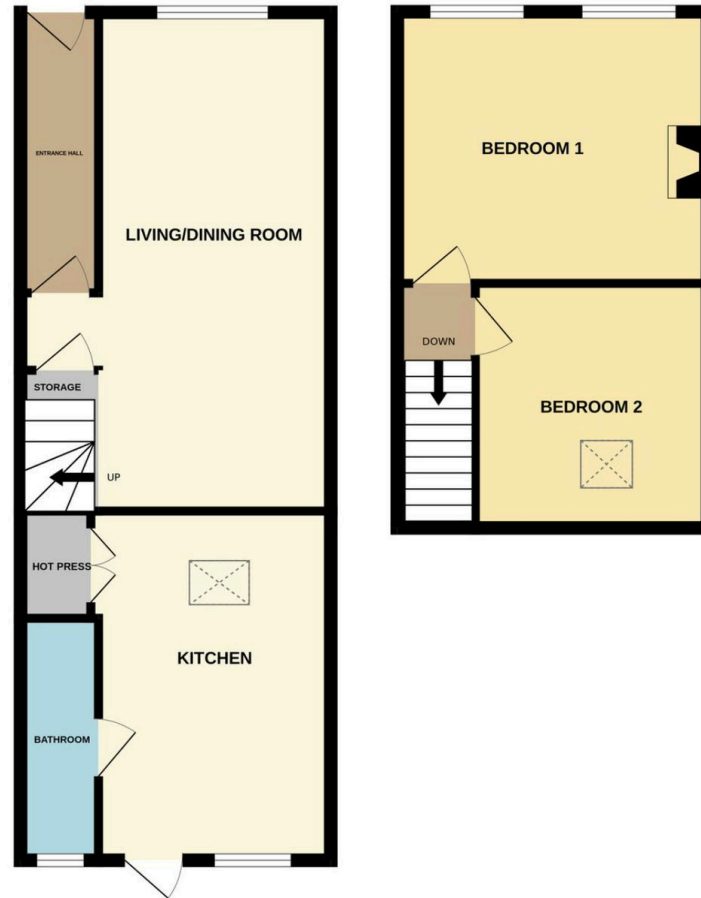
Superbly located 2 bedroom extended terraced house

10 Cahill Ville, St Luke's, Cork City. T23 DYF2



Plans

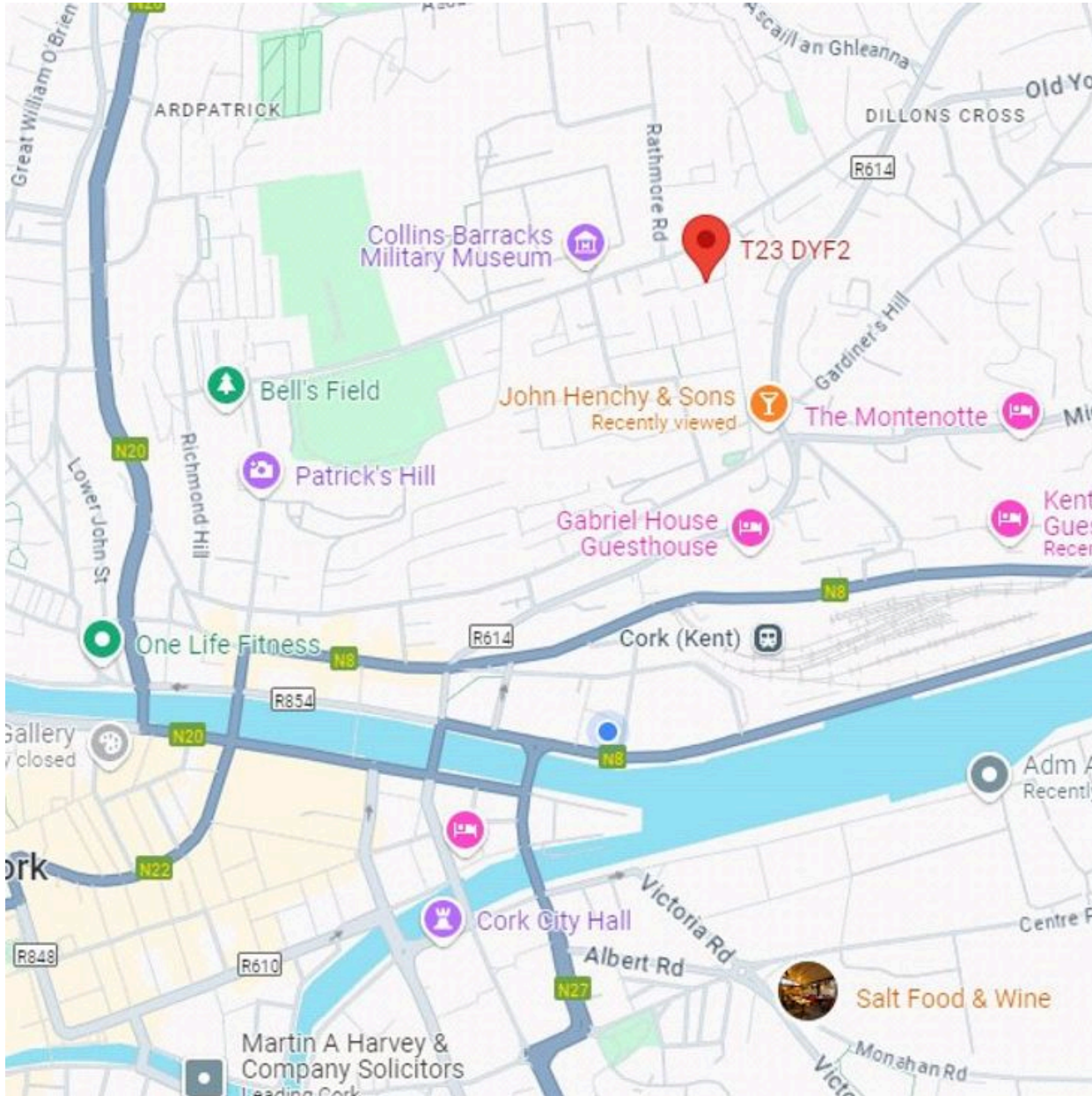
 71 sq m / 764 sq ft



Superbly located 2 bedroom extended terraced house

10 Cahill Ville, St Luke's, Cork City. T23 DYF2

savills



Local Area

- St Luke's Cross - 6 mins walk
- Cork City Centre - 20 mins walk
- Kent Train Station - 14 mins walk
- The Victorian Quarter - 12 mins walk
- Cork Airport - 12 mins drive



Superbly located 2 bedroom extended terraced house

10 Cahill Ville, St Luke's, Cork City. T23 DYF2



Property Details

Key Features

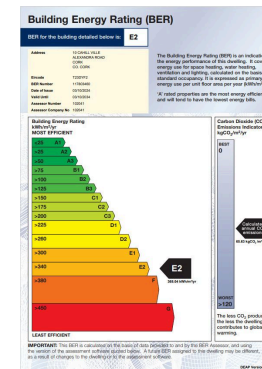
- Stunning two bedroom extended terraced property
- Approx. 71 sq m / 764 sq ft
- Immaculate decorative order throughout
- Private rear garden with patio and shed
- Walking distance of St Luke's village & Cork City
- City views

Services & Additional Information

- GFCH
- Mains services
- Internet connection

BER

BER Rating = E2



Superbly located 2 bedroom extended terraced house

10 Cahill Ville, St Luke's, Cork City. T23 DYF2



Enquire



Karl O'Reilly

Penrose House, Penrose Dock, Cork City
+353 (0) 83 878 3944
Karl.OReilly@savills.ie

More Information



[View on website](#)



[View Digital Brochure](#)



[Property Search](#)

Viewing strictly by appointment

Property Ref: CKK240574

Cork

Penrose House, Penrose Dock, T23 V38E
+353 (0) 21 427 1371



Important Notice: Savills, its clients and any joint agents give notice that 1: They are not authorised to make or give any representations or warranties in relation to the property either here or elsewhere, either on their own behalf or on behalf of their client or otherwise. They assume no responsibility for any statement that may be made in these particulars. These particulars do not form part of any offer or contract and must not be relied upon as statements or representations of fact. 2: Any areas, measurements or distances are approximate. The text, photographs and plans are for guidance only and are not necessarily comprehensive. It should not be assumed that the property has all necessary planning, building regulation or other consents and Savills have not tested any services, equipment or facilities. Purchasers must satisfy themselves by inspection or otherwise. *powered by* **FloPro**