

1 Bird Eye view
107



View from Stamer Street



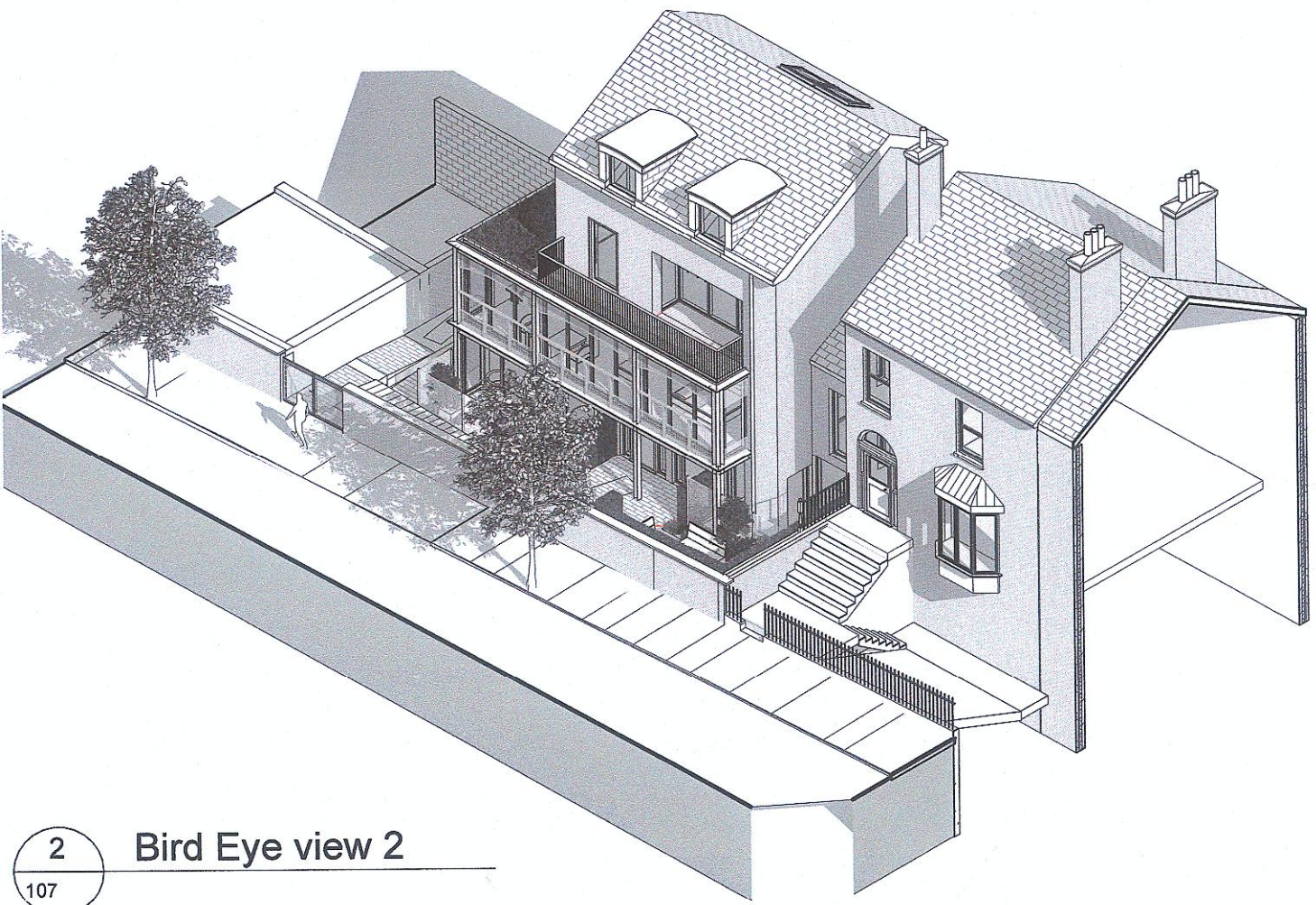
View From Stamer Street



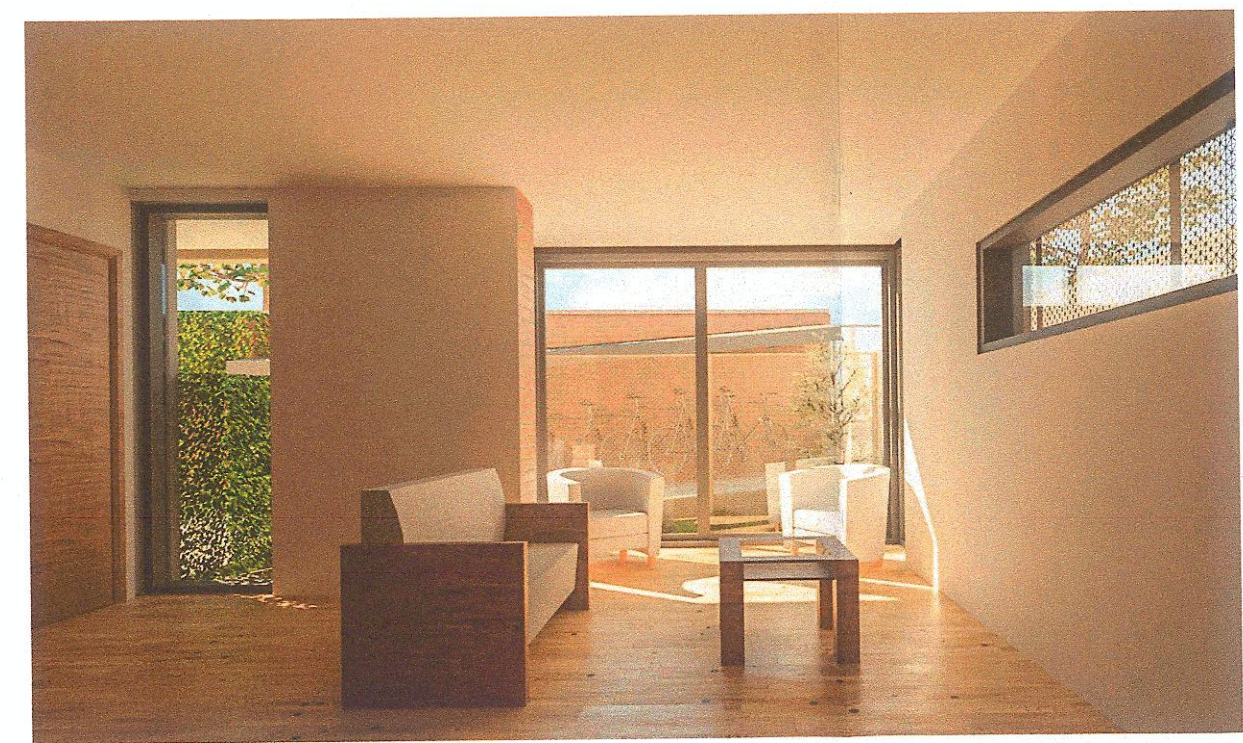
View from entrance toward communal garden



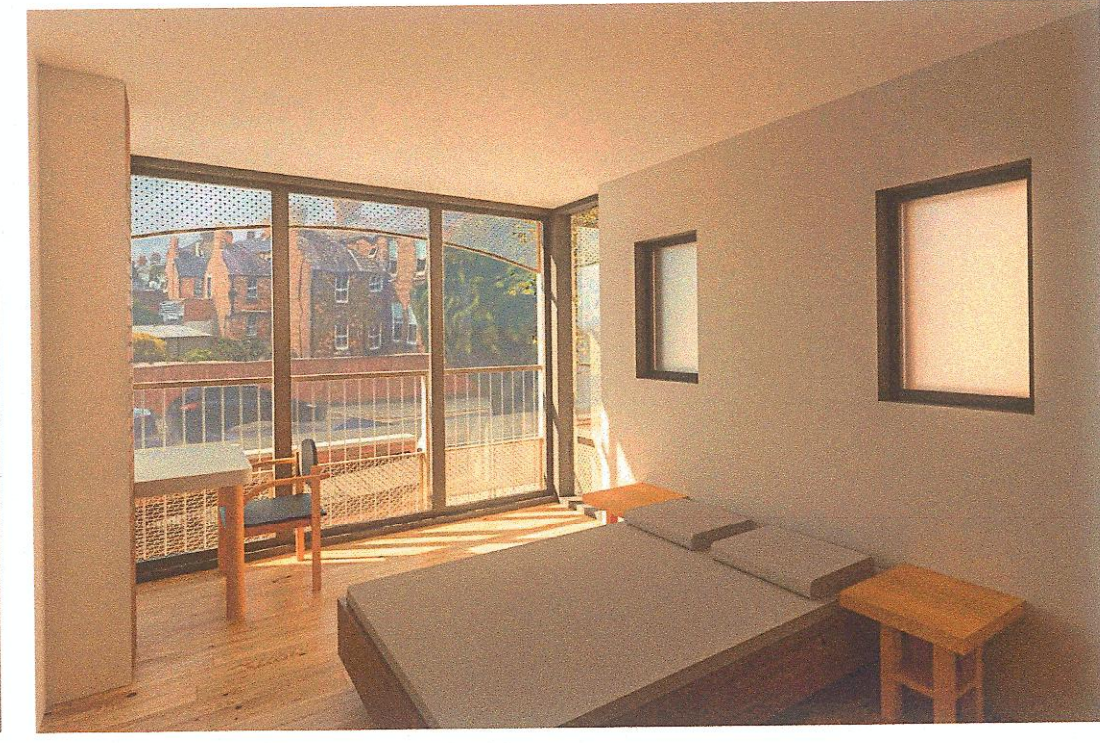
View from communal garden toward entrance



2 Bird Eye view 2
107



View from Unit 1 Living room



View from Unit 1 Bedroom 2

peter oakes | architects
architecture sustainability building conservation

Jilba
70 Meath Road
Bray County
Wicklow
Ireland

info@peteroakes.ie
+353 (0) 1 2022977 Tel
+353 (0) 1 2765376 Fax

© THIS DRAWING OR DESIGN MAY NOT BE REPRODUCED WITHOUT PERMISSION

Drawn By: **DD**
Checked By: **PO**

Notes:

Planning
3D views

16/05/23

PROJECT
Rear 23 Harrington Street

Proposed New House Side
of 12 Stamer St. / Rear 23
Harrington St, Dublin 8

107
drawing number

616B
project number

DO NOT SCALE FROM THIS DRAWING. ALL ERRORS AND OMISSIONS TO BE REPORTED TO THE ARCHITECT. THIS DRAWING TO BE READ IN CONJUNCTION WITH RELEVANT CONSULTANTS' DRAWINGS. THESE DRAWINGS FORM PART OF THE CONTRACT.

17/05/2023 10:52:09