



Woodlands Grove

BLACKROCK

A BOUTIQUE DEVELOPMENT
OF ONLY TWENTY SIX
LUXURY RESIDENCES

Offering the perfect blend
of luxurious sustainable living,
in a stylish contemporary
development in Blackrock.





The Location

Woodlands Grove is serviced by an excellent public transport system.



Dublin Bus
Walking | 2 mins
Travel Time
20 mins to City Centre



Blackrock DART
Walking | 20 mins
Travel Time
18 mins to City Centre



N11 Motorway
Car | 6 mins
M50 Motorway
Car | 17 mins



Aircoach
3 mins
Travel Time
40 mins to Dublin Airport

Situated in a sought-after coastal location that's home to a wide range of shops, restaurants, cafes and bars.



- 01. Blackrock Dart Station
- 02. Gleasons of Booterstown
- 03. Main Street, Blackrock
- 04. Blackrock Park
- 05. Starbucks Coffee
- 06. Bear Market Coffee
- 07. Mount Merrion Avenue
- 08. Blackrock College

The Apartments



Main Block



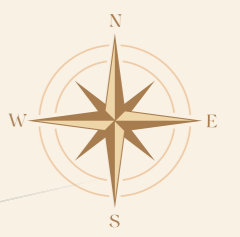
Two-Storey Mews

Woodlands Grove

BLACKROCK




Woodlands Grove
 BLACKROCK

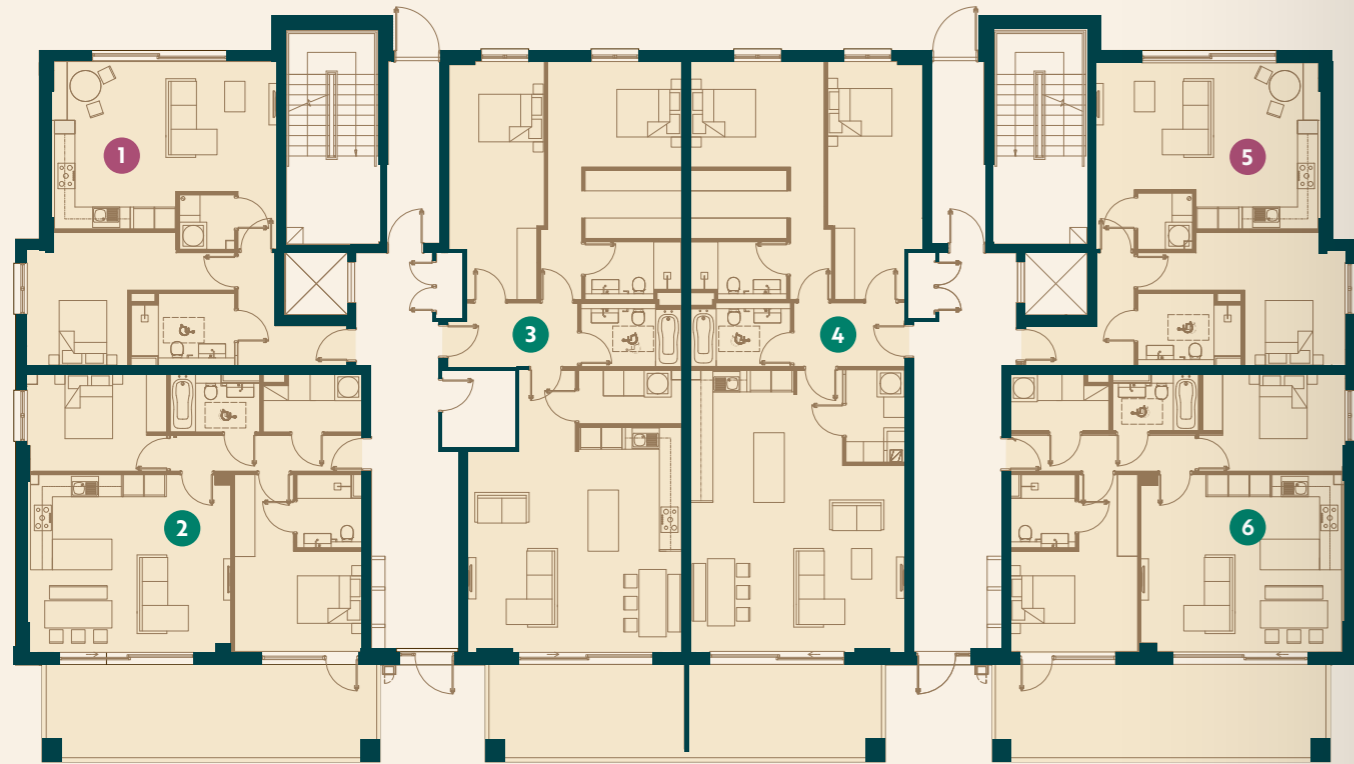


**for information purposes only*

WOODLANDS PARK

Ground Floor

● One Bedroom ● Two Bedroom



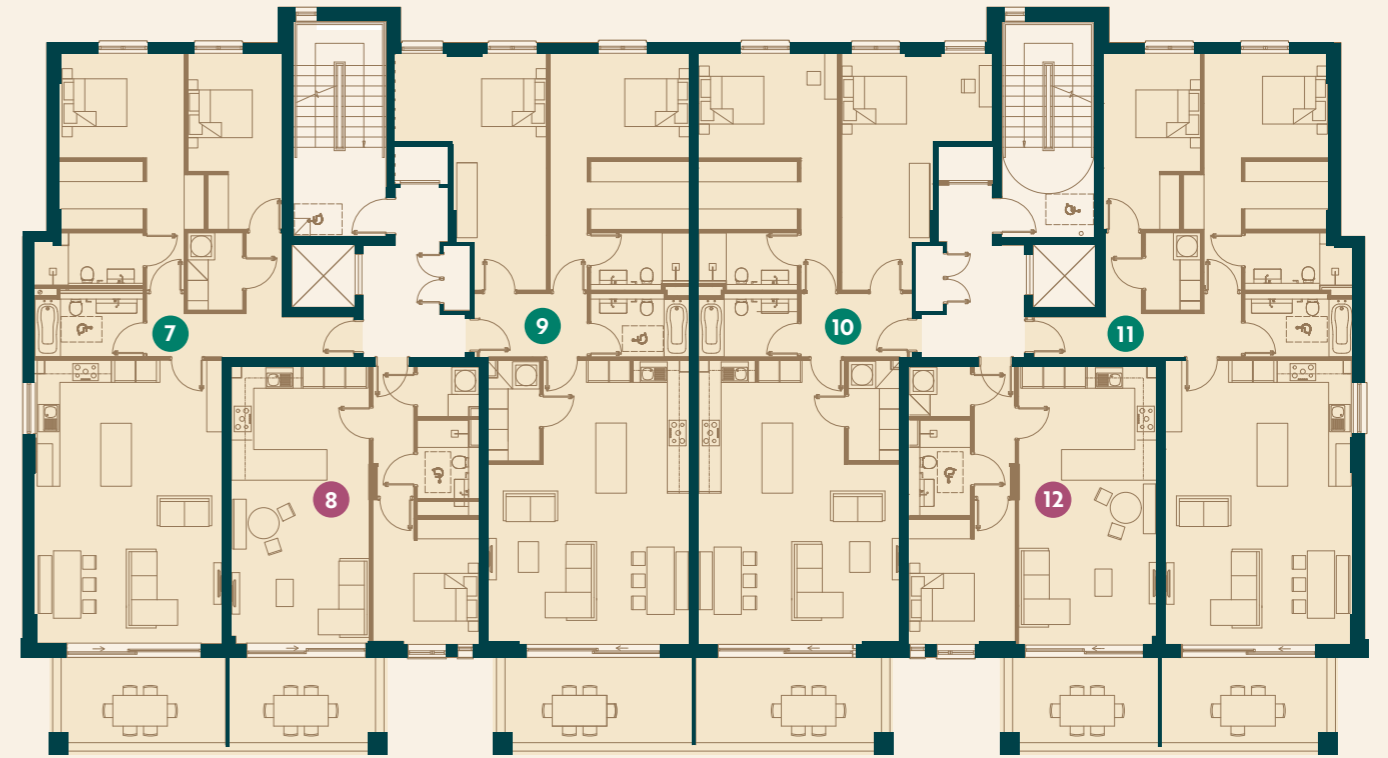
Schedule of Accommodation

Number	Level	Description	Aspect	Sq.m	Sq.ft
1	Ground	1 Bedroom Apartment	Dual	63.0	678
2	Ground	2 Bedroom Apartment	Dual	79.0	850
3	Ground	2 Bedroom Apartment	Dual	109.0	1,173
4	Ground	2 Bedroom Apartment	Dual	111.0	1,195
5	Ground	1 Bedroom Apartment	Dual	63.0	678
6	Ground	2 Bedroom Apartment	Dual	79.0	850

**for information purposes only*

First Floor

● One Bedroom ● Two Bedroom



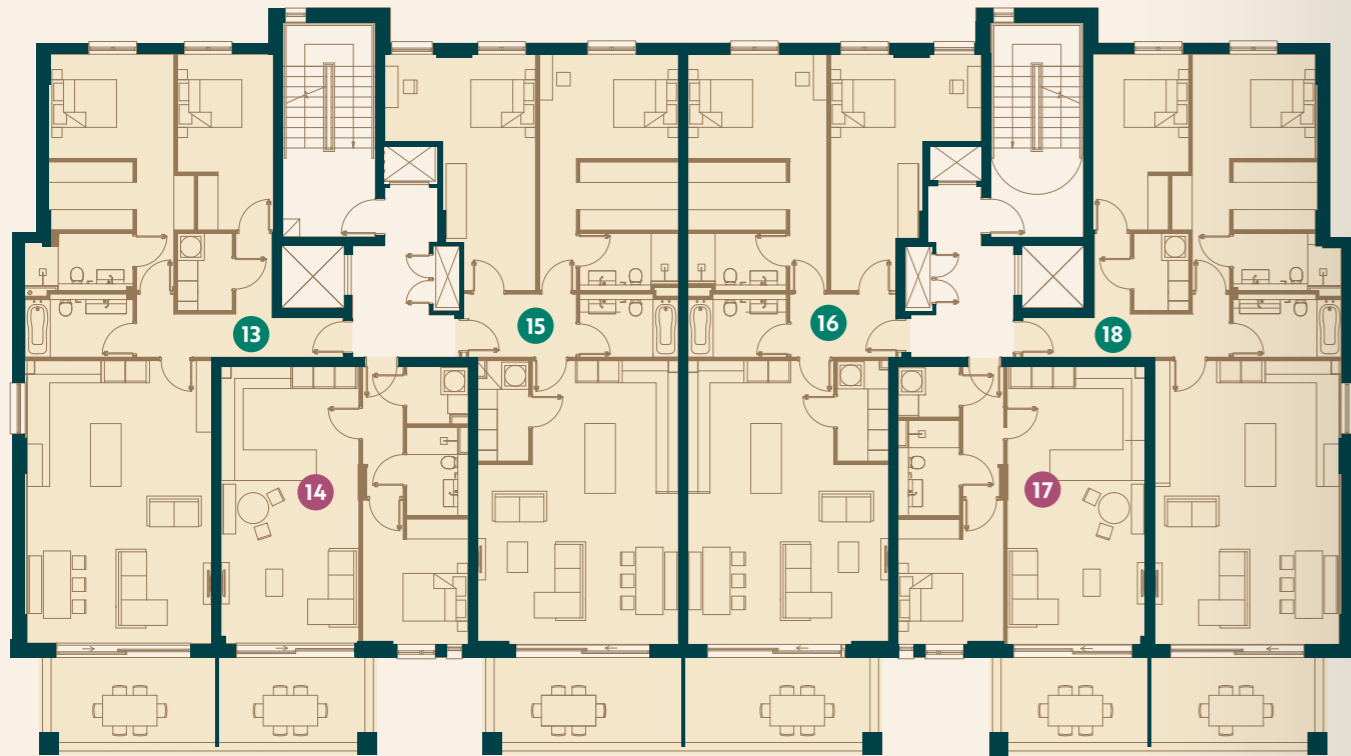
Schedule of Accommodation

Number	Level	Description	Aspect	Sq.m	Sq.ft
7	First	2 Bedroom Apartment	Dual	109.0	1,173
8	First	1 Bedroom Apartment	Single	59.0	635
9	First	2 Bedroom Apartment	Dual	113.0	1,216
10	First	2 Bedroom Apartment	Dual	113.0	1,216
11	First	2 Bedroom Apartment	Dual	109.0	1,173
12	First	1 Bedroom Apartment	Single	109.0	635

**for information purposes only*

Second Floor

● One Bedroom ● Two Bedroom



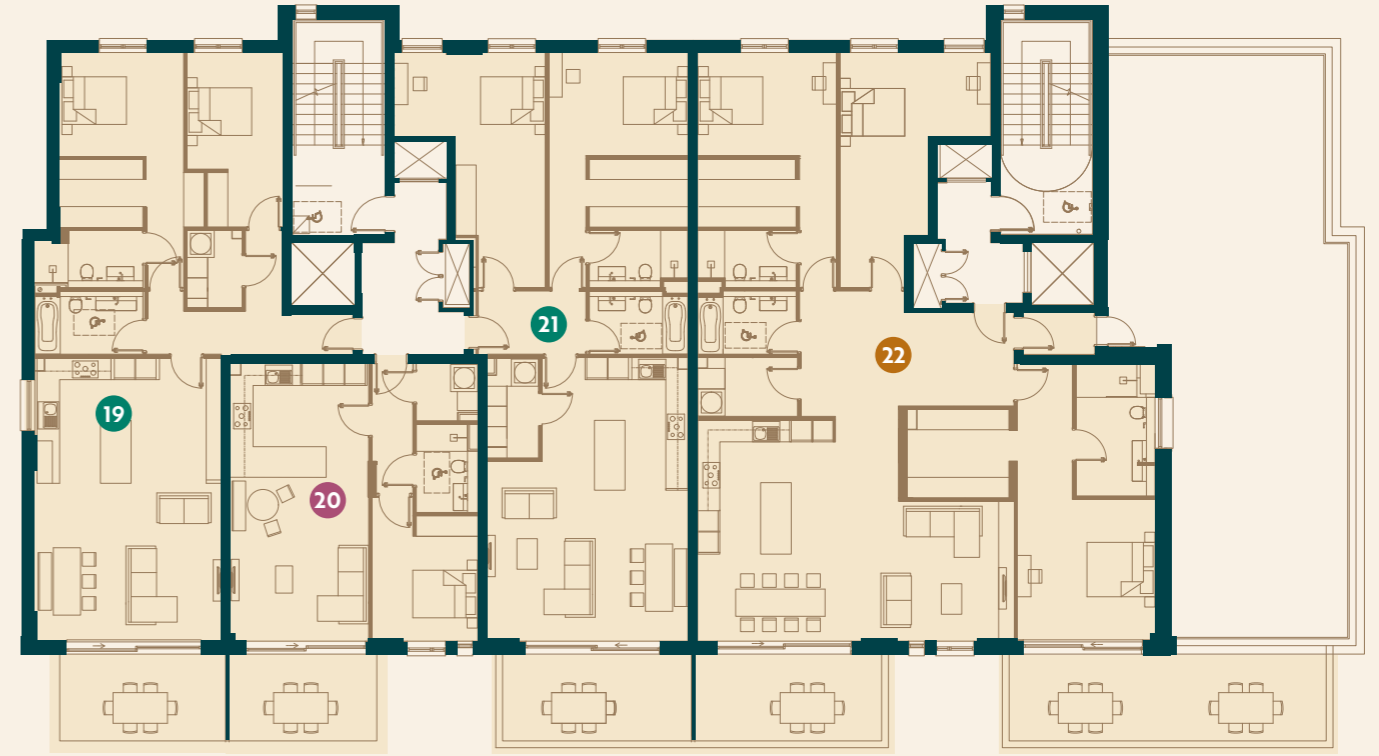
Schedule of Accommodation

Number	Level	Description	Aspect	Sq.m	Sq.ft
13	Second	2 Bedroom Apartment	Dual	109.0	1,173
14	Second	1 Bedroom Apartment	Single	59.0	635
15	Second	2 Bedroom Apartment	Dual	113.0	1,216
16	Second	2 Bedroom Apartment	Dual	113.0	1,216
17	Second	1 Bedroom Apartment	Single	59.0	635
18	Second	2 Bedroom Apartment	Dual	109.0	1,173

**for information purposes only*

Third Floor

● One Bedroom ● Two Bedroom ● Three Bedroom



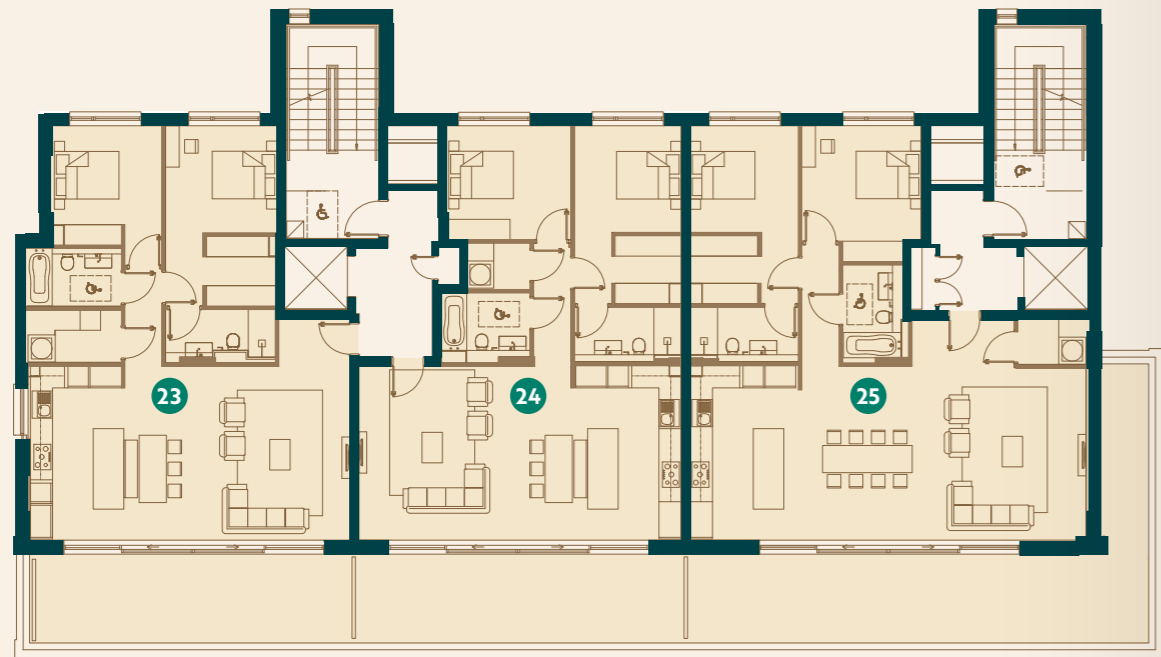
Schedule of Accommodation

Number	Level	Description	Aspect	Sq.m	Sq.ft
19	Third	2 Bedroom Apartment	Dual	109.0	1,173
20	Third	1 Bedroom Apartment	Single	59.0	630
21	Third	2 Bedroom Apartment	Single	113.0	1,206
22	Third	3 Bedroom Apartment	Dual	178.0	2,002

**for information purposes only*

Penthouse

● Two Bedroom

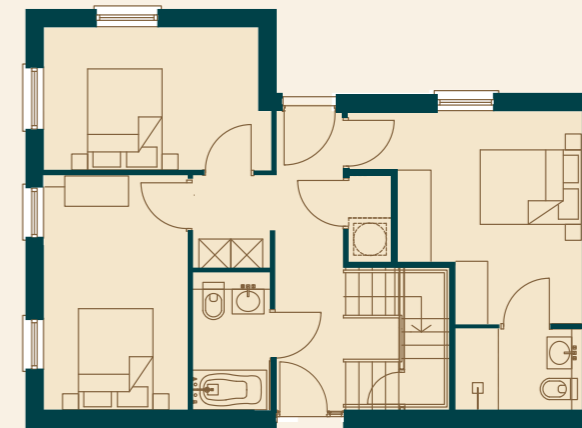


Schedule of Accommodation					
Number	Level	Description	Aspect	Sq.m	Sq.ft
23	Fourth	2 Bedroom Penthouse	Dual	99.0	1,076
24	Fourth	2 Bedroom Penthouse	Dual	96.0	1,044
25	Fourth	2 Bedroom Penthouse	Dual	112.0	1,270

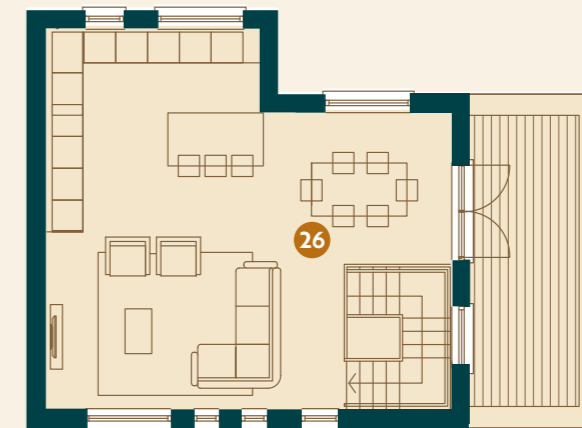
**for information purposes only*

Mews

● Three Bedroom



First Floor



Ground Floor



Schedule of Accommodation					
Number	Level	Description	Aspect	Sq.m	Sq.ft
26	Mews	3 Bedroom Mews	Dual	110.0	1,184

**for information purposes only*

SALES AGENTS



KELLY WALSH
property advisors & agents

PSRA No: 002885

15 Herbert Street,
Dublin 2
kellywalsh.ie

T +353 1 6645500

EXCLUSIVELY DEVELOPED BY

TurkingtonRock

HOMES WITH SOUL

Turkington Rock
83-87 Main Street
Ranelagh
Dublin 6
turkingtonrock.com

REGISTER YOUR INTEREST

woodlandsgrove.ie



These particulars and any accompanying documentation and price lists do not form part of any contract and are for guidance only. Measurements and distances are approximate and drawings, maps and plans are not to scale. Intending purchasers should satisfy themselves as to the accuracy of details given to them either verbally or as part of this brochure. The developer reserves the right to make alterations to design and finish. Estimated measurements indicated are gross internal area – the distance from block wall to block wall excluding internal finishes. This is the industry norm and variations can occur.