

**TO LET**

**RETAIL UNIT 2 | C.1,437 SQ. FT**

**NEWTOWN SQUARE**

**BLESSINGTON | CO WICKLOW | W91 PT89**

UNIT 2  
TO LET

BLESSINGTON TOWN SQUARE

LOCATION MAP ONLY

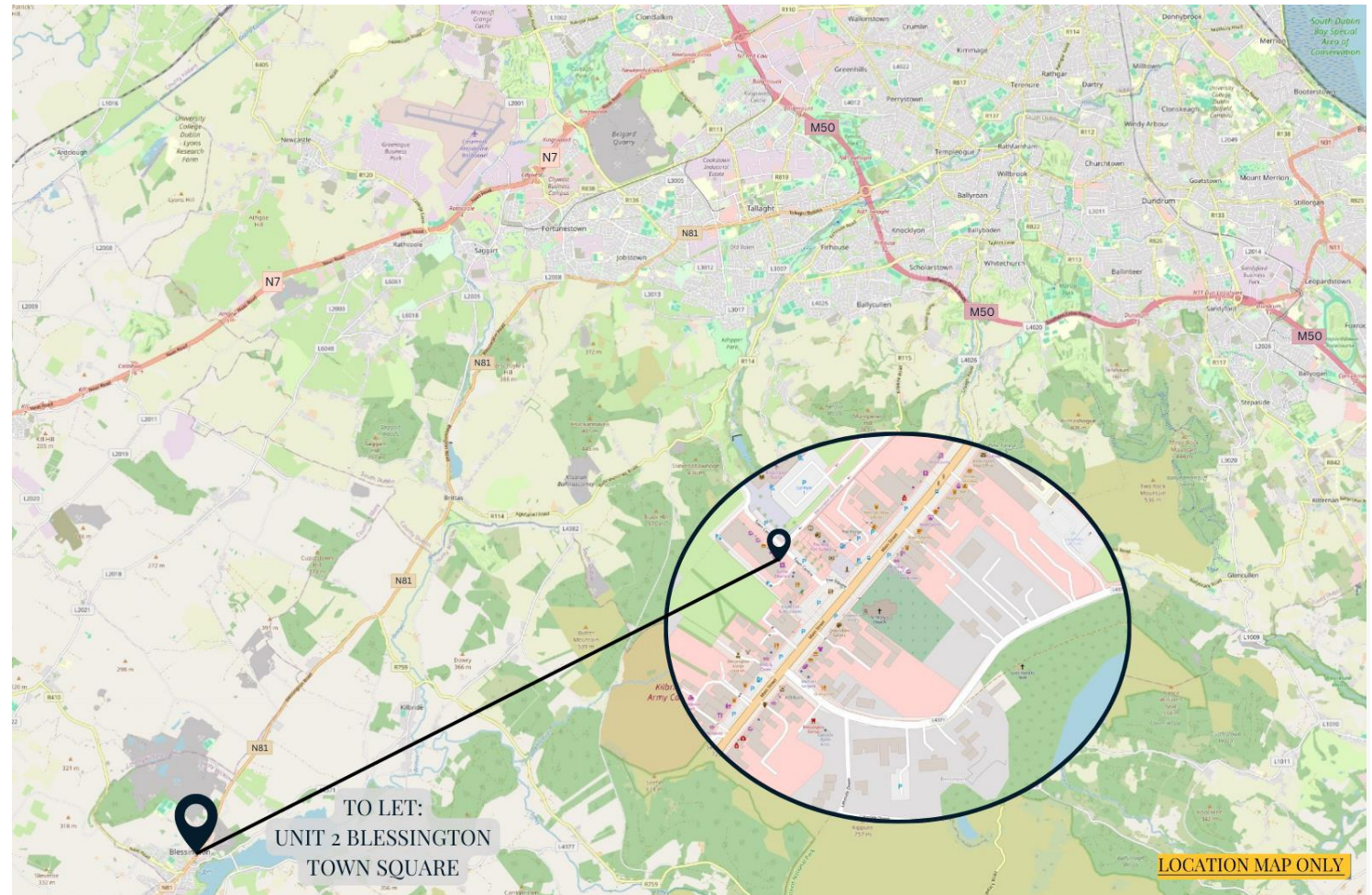


# LOCATION

Situated on busy promenade of shops beside and Dunnes Stores Supermarket and adjoining the car park. This unit has prime position with a good passing trade.

Blessington Town is a thriving commuter town. The town is situated approximately 18 miles to the south of Dublin on the N81. Transport links in the area include the N81 and Dublin Bus commuter route with easy access to the M50, M7 and the Luas at Citywest.

Adjacent occupiers include AIB Bank, Super Valu, Dunnes Stores, Paddy Power and Boyles Sports. The town of Blessington has a population of approximately 6,000 people.



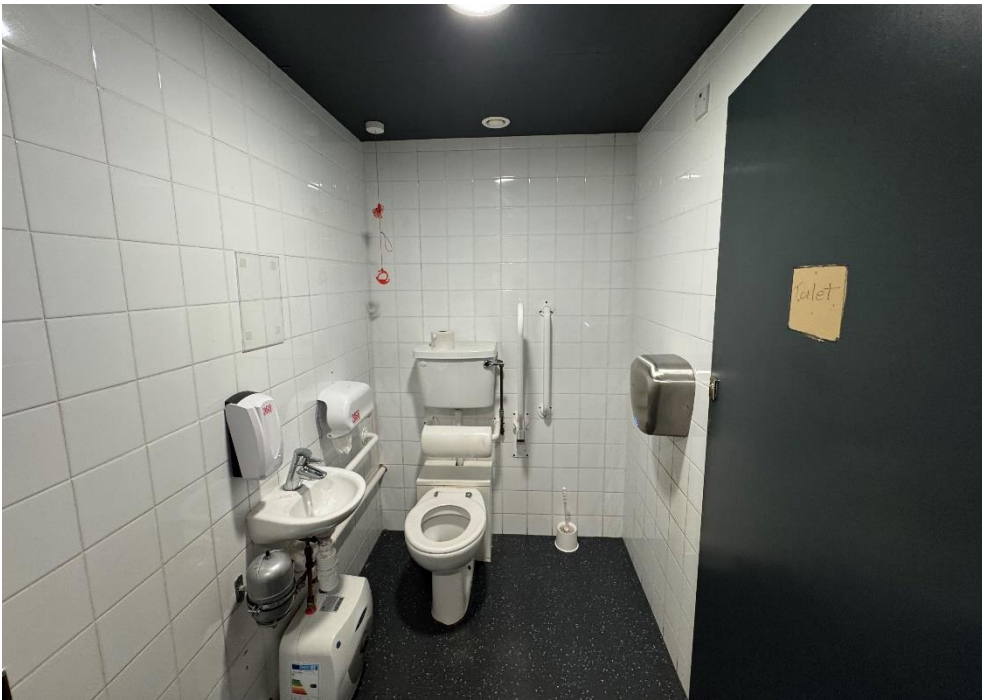
# DESCRIPTION

Comprises of a large fully fitted retail unit (formerly Paddy Power Bookmakers) in this high-profile trading location. The unit extends to c. 134 sq. mt./ 1,437 sq. ft. and has good frontage to the shopping street and has the added benefit of two dedicated car parking spaces in the underground car park. It is ideally suitable for many uses.











## VIEWING:

By Appointment Only

## RENT:

€30,000 Per Annum

Plus Rates & Service Charge

## BER:

BER C1

J. P. & M. Doyle Ltd.

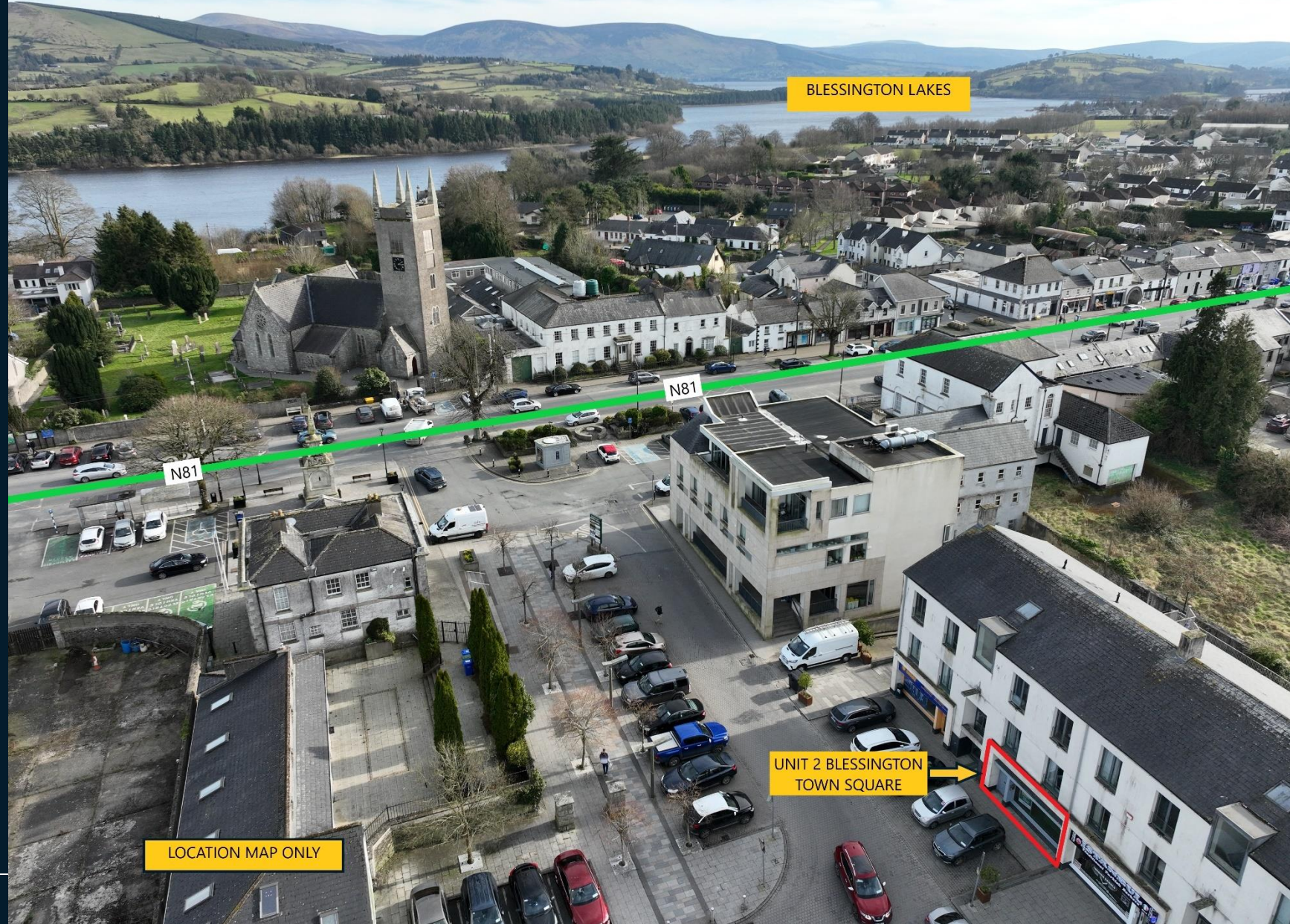
105 Terenure Road East

Dublin 6

T: (01) 4903201

E: [enquiries@jpmdoyle.ie](mailto:enquiries@jpmdoyle.ie)

W: [www.jpmdoyle.ie](http://www.jpmdoyle.ie)



J.P. & M. Doyle Ltd., for themselves and for the vendors of this property whose agents they are, give notice that:

- (1) the particulars are set out as a general outline for the guidance of intending purchasers and do not constitute part of an offer or contract.
- (2) all description, dimensions, references to condition and necessary permission of use and occupation, and other details are given in good faith and are believed to be correct, but any intending purchasers or tenants should not rely on them as statements or representations of fact but must satisfy themselves by inspection or otherwise as to the correctness of each of them.
- (3) no person in the employment of J.P. & M. Doyle Ltd. has any authority to make or give any representations or warranty whatever in relation to the property.