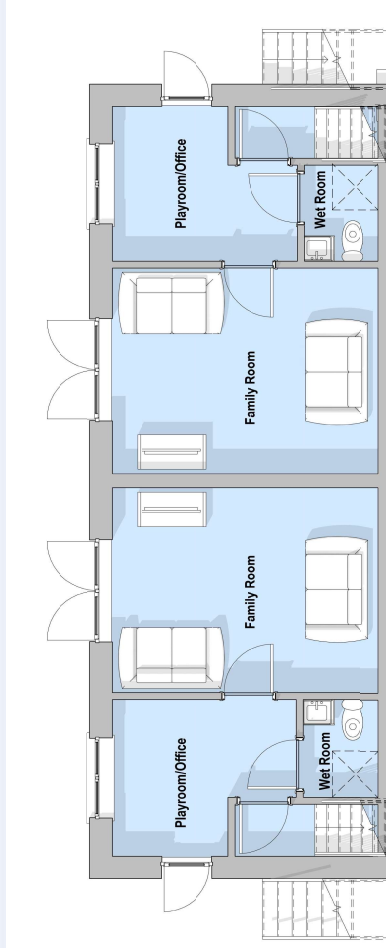


# HOUSE TYPE D

## LOWER GROUND FLOOR PLAN

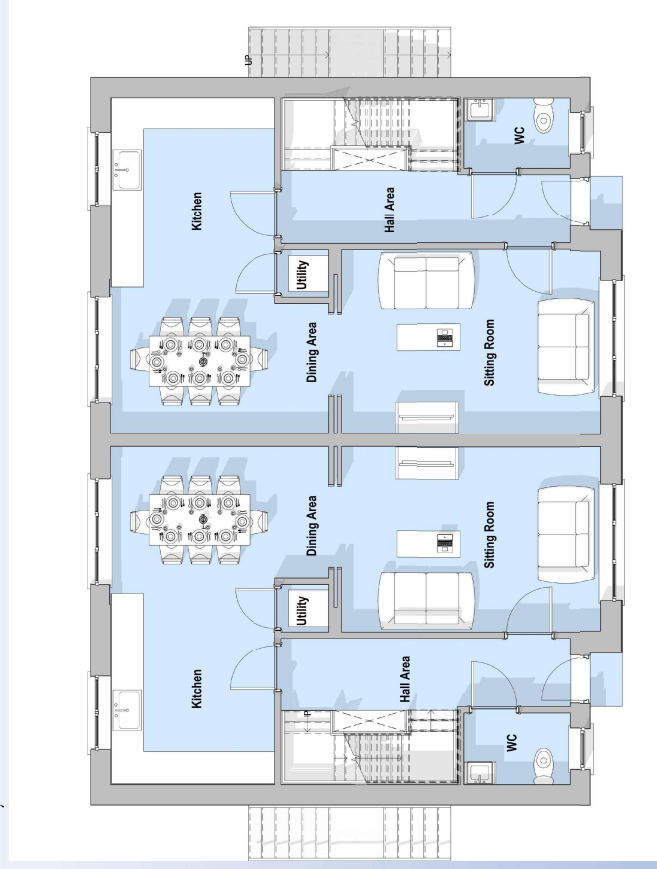
Playroom/Office: 2.7m x 3.1m  
Wet Room: 1.7m x 1.8m  
Family Room: 3.6m x 4.6m



LOWER GROUND FLOOR PLAN

## GROUND FLOOR PLAN

Hall Area: 1.35m x 5.4m  
WC: 2.0m x 1.35m  
Sitting Room: 3.5m x 5.5m  
Dining Area: 3.7m x 3.5m  
Kitchen: 3.6m x 3.12m  
Utility: 0.9m x 0.9m



GROUND FLOOR PLAN

3 Bed Semi-Detached  
143sq m

## HOUSE TYPE D FLOOR PLANS

Quarry Road,  
GRACEDIEU,  
WATERFORD

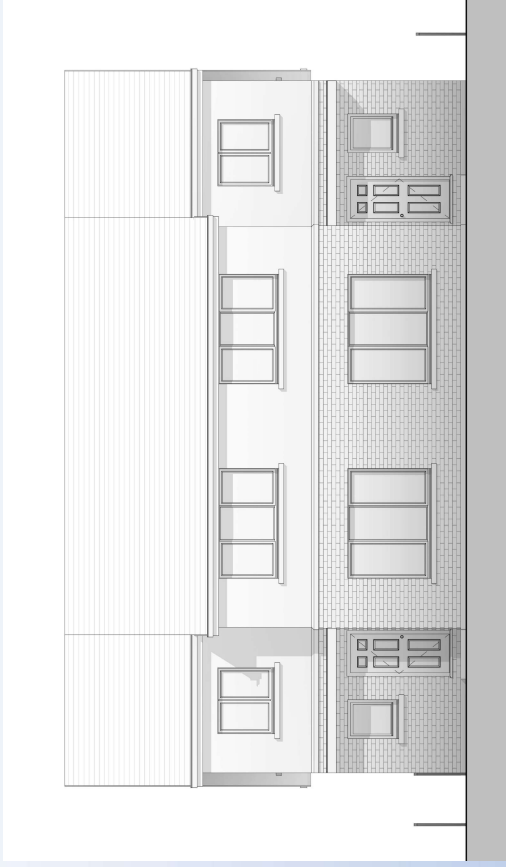
# HOUSE TYPE D



FIRST FLOOR PLAN

FIRST FLOOR PLAN

- Landing: 1.35m x 3.37m
- Bedroom 1: 3.8m x 3.5m
- En-Suite: 1.1m x 2.5m
- Bedroom 2: 3.75m x 3.0m
- Bedroom 3: 3.3m x 2.5m
- Bathroom: 2.0m x 2.7m



HOUSE TYPE D (FRONT ELEVATION)

3 Bed Semi-Detached  
143sq m

## HOUSE TYPE D FLOOR PLANS & ELEVATION

Quarry Road,  
GRACEDIEU,  
WATERFORD