

# For Sale

Asking Price: €285,000

Sherry  
FitzGerald  
O'Neill



Shountalive, Kilmacowen,  
Eyeries, Co. Cork, P75 AK60

BER D2

[sherryfitz.ie](http://sherryfitz.ie)





Spacious 4-bedroom detached bungalow residence, with 0.35 acre of mature, landscaped grounds and set in a quiet, convenient rural setting with superb mountain and coastal views of Coulagh Bay in the distance.

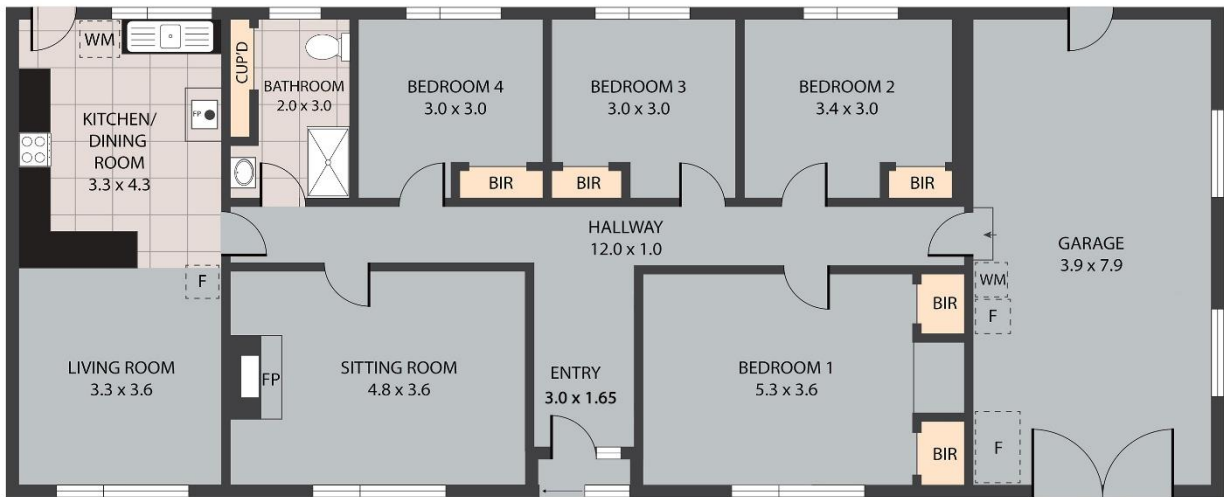
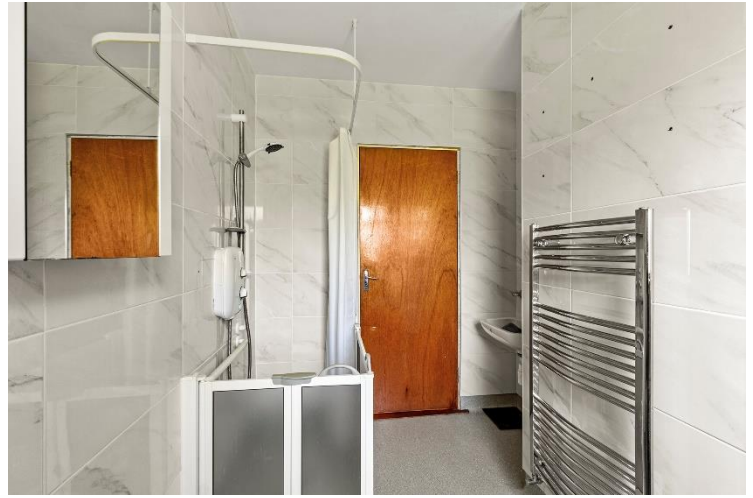
The property comprises 145 sq. m. approximately and is laid out in well-designed rooms that take advantage of its elevated site. The house also has the benefit of oil-fired central heating, solid fuel stove, pvc double glazed windows and a tarmacadam driveway.

The accommodation includes entrance hallway, open plan kitchen / dining room, sitting room, 4 double bedrooms and a family bathroom. There is also an attached garage which is useful as a workshop or could easily be adapted to provide some extra residential space.

The property enjoys a peaceful setting on a site of approximately 0.35 acres laid out mostly in lawn and car parking areas. Shountalive is located just a 10 minute drive to both the peninsula's primary town, Castletownbere and to the picturesque village of Eyeries.

The Beara Peninsula is renowned for its walking trails along the Wild Atlantic Way that take in many historical and archaeological sites. The Beara Peninsula's principal town, Castletownbere is one of Europe's premier hubs for fishing fleets. The waters around the harbour are ideal for sailing and fishing enthusiasts.





**Shountalve, Eyeries P75 AK60**

TOTAL APPROX. FLOOR AREA 145 SQ.M

Whilst every attempt has been made to ensure the accuracy of the floor plan contained here, measurements of doors, windows, rooms and any other items are approximate and no responsibility is taken for any error, omission, or misstatement. This plan is for illustrative purposes only and should be used as such by any prospective purchaser.





**NEGOTIATOR**

Olivia Hanafin  
Sherry FitzGerald O'Neill  
Wolfe Tone Square, Bantry,  
Co Cork  
T: 027 31030  
E: info@sfoneill.ie

**VIEWINGS**

Strictly By Appointment Only

**ENERGY RATING**

BER: D2  
Cert No.: 111193694  
EPI: 296.47 kWh/m<sup>2</sup>/yr

[sherryfitz.ie](http://sherryfitz.ie)  
[sfoneill.ie](http://sfoneill.ie)  
[myhome.ie](http://myhome.ie)  
[daft.ie](http://daft.ie)

**CONDITIONS TO BE NOTED:** A full copy of our general brochure conditions can be viewed on our website at <http://www.sherryfitz.ie/terms>, or can be requested from your local Sherry FitzGerald office. We strongly recommend that you familiarise yourself with these general conditions. While care has been taken to ensure that information contained in Sherry FitzGerald publications is correct at the time of publication, changes in circumstances after the time of publication may impact on the accuracy of this. PSRA Registration No. 004158