

Please Note:
Prefabricated Roof Truss Shall Be Fitted & Finished In Accordance With Part B Fire Safety Volume 2 -Dwellings Houses 2017. All Penetration To Be Fire Stopped & Load Bearing Studs Which Are Used To Support The Truss Must Have The Same Fire Resistance As Required For The Truss.

Note:
All Sizes Of Each Element Are In Accordance With Minimum Standards On Figure 4 SR.82: 2017

Breather Membrane Shall Be Overlapped By A Min. Of 150mm And Shall Have A Min. Lap Of 25mm Beyond Timber Battens In Accordance With Figure 9, page 60 sr.82 :2017

Eaves Overlap And Battens Shall Be In Accordance With Minimum Standards As Detailed In Fig. 19 SR.82 :2017

The Battens Shall Be Designed And Certified By The Engineered Truss Manufacturer Who Is Contracted To Be Responsible For Same. The Design And Fitting Of Battens Shall Be Checked By The Architect, Supervising Office Or Structural Engineer.
The Batten Design Shall Be In Accordance With Annex. A, Pages 97 - 100 SR.82 :2017

100x75mm Treated Wallplate Bedded On A Continuous Bed Of Mortar & Strapped To Walls With 1.2m Long 50x3mm Galvanised Steel Wallplate Straps @ 1.2m ctrs Max (Lateral Supports Shall Be Carried Out In Accordance With Part A Structure Of Technical Guidance Documents See Par 1.1.3.25 & Diagram 7)

Intermediate Floor Build-Up:
15mm OSB/Plywood Deck On 225x44mm c16 Timber Flooring Joist @ 400mm Centres (Lateral Supports Shall Be Carried Out In Accordance With Part A Structure Of Technical Guidance Documents See Par 1.1.3.24 & Diagram 6) With 12.5mm Type F Or 15mm Type A Gypsum Plasterboard (Shall Be Carried Out In Accordance With Part B Fire Safety Volume 2 -Dwellings Houses 2017) And Skim Finish.

Wall Build-Up (0.18w/m²k):
Painted Internal Finish With Skim Finish On Scratch Coat Plaster On 100x215x440mm Concrete Block With 150mm Cavity Partially Filled With 110mm Xtratherm Xtrowall Plus 110 Rigid Insulation Board Or Equal And Approved To 40mm Cavity With 100x215x440mm Concrete Block Tied Back To Inner Leaf With Masonry Wall Ties (to comply with part a structure of technical guidance documents see par 1.1.3.27 & diagram 9) With 20mm Sand/ Cement Nap Render Finish Or Brick Finish - see elevations for extent of external finishes

Floor Build-Up:
Floor Finish tbc On 150mm C25/30 Concrete Floor Slab With 1 Layer Of A252 Steel Mesh With 400mm Overlap & 50mm Clearance From Bottom Of Slab On 125mm Kingspan Thermalfloor® 1770, Or Equal And Approved On Monarflex 1200 Gauge Radon Layer (BS 8102:1990) Lapped Through Walls As Shown All services that puncture the radon membrane shall be Sealed And Taped Appropriately Laid On 50mm Sand Blind On Well Compacted Hardcore In Accordance With S.R 21 Annex Hardcore Min 200mm (4/40mm) T2 Permeable Hardcore Over T1 (0-32mm) Up to 900mm Compacted In 150mm Layers

Roadstone Thermal Block Or Similar & Approved To Prevent Cold Bridging

R.L.108.040

Approx. Position Of Water Storage Tank, All Structural Supports In Accordance With SR11 Guidelines

F.F.L.102.865

G.F.L.100.150

G.L.100.000

07 Section A-A
9.01 Scale 1:50

Roof Build Up 1:
Cedral 600x300mm Thrutone Endurance Slates Fixed In Accordance With S.R.82:2017 For And Exposed Site With 2 Cedral Copper Nails And One Cedral Copper Crampion And Lay With A 110mm Head Lap.50x25mm Slatng Battens For Rafter Up To 400mm, Fixed At 245mm Maximum Centres. 50x35mm Counter Battens Running Eaves To Ridge Over The Underlay And Fixed Into The Rafters. Tyvek Breathable Roofing Felt On 150 x 50mm Prefabricated Roof Truss @ 600mm Centres (Lateral Supports Shall Be Carried Out In Accordance With Part A Structure Of Technical Guidance Documents See Par 1.1.3.25 & Diagram 7) With 400mm Knauf Loft Insulation Or Equal And Approved Between And Above Ceiling Joists Or Similar And Approved With Aiguard® Vapour Control Layer Or Similar And Approved And 15mm Gypsum Plasterboard Or Equal And Approved Joists To Be Taped, Filled, Finished & Fixed To Manufacturer's Specification With A Full Skim.

Tegral Eaves Vent Fixed Between Rafters o.s.p
Kingspan Kooltherm Cavity Closer In Accordance With Part B Fire Safety Volume 2 -Dwellings Houses 2017

100x75mm Treated Wallplate Bedded On A Continuous Bed Of Mortar & Strapped To Walls With 1.2m Long 50x3mm Galvanised Steel Wallplate Straps @ 1.2m ctrs Max (Lateral Supports Shall Be Carried Out In Accordance With Part A Structure Of Technical Guidance Documents See Par 1.1.3.25 & Diagram 7)

Roof Build Up :
VMZ Standing Seam In VMZINC® Plus Or Equal & Approved Shall Be Fixed To Manufacturer's Specification On One Layer Of 18mm Plywood Roof Deck Fixed To 38x38mm Timber Batten Creating An Air Cavity With Dupont Tyvek Structure Guard Breather Membrane To Be Lapped & Sealed At Joints To Manufacturer's Specification Fixed To 175x50mm Roofing Joists @ 400mm Centres. With Isover Vario Air Tightness & Moisture Control System Fitted, Fixed & Sealed To Manufacture's Specification.

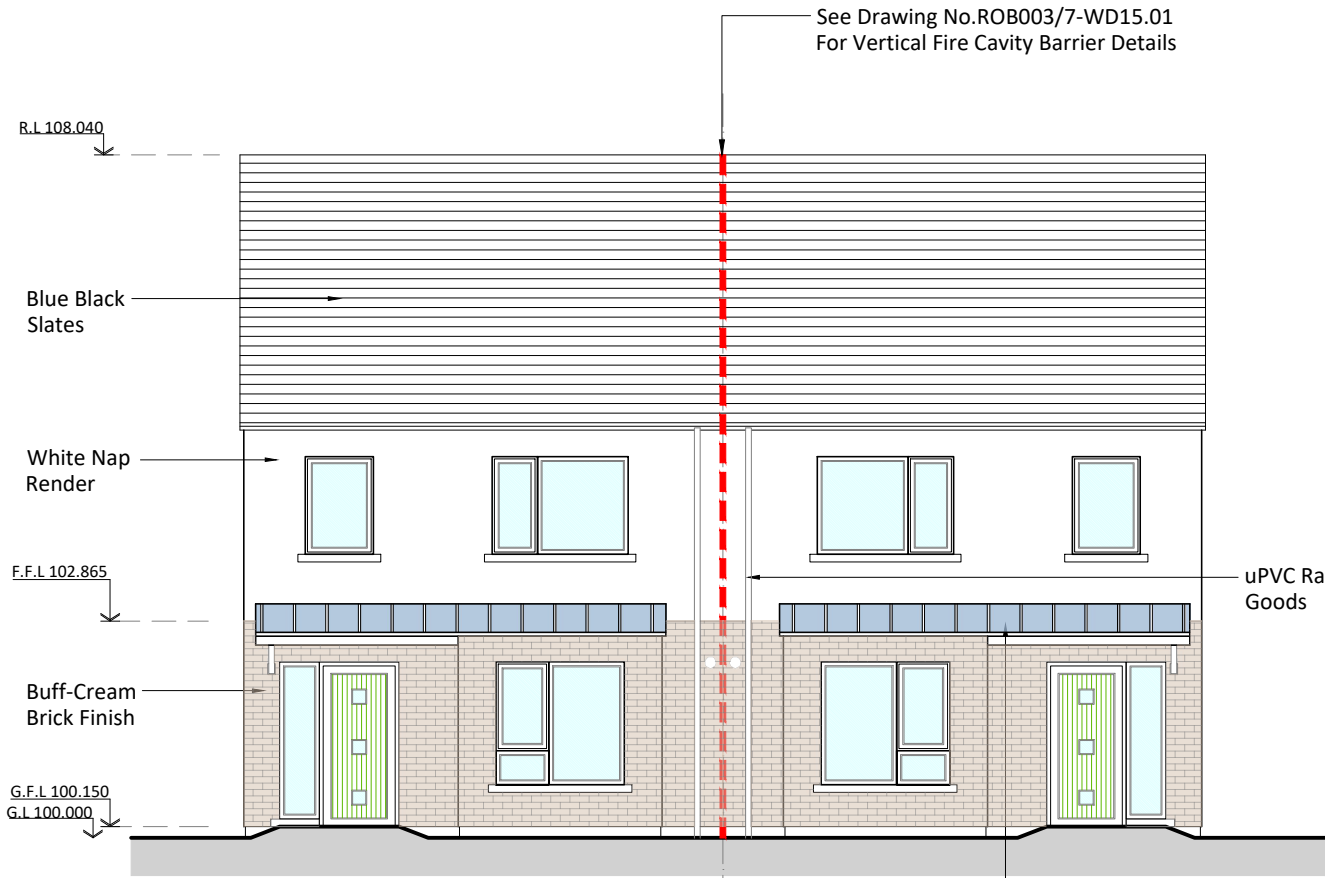
Steelite Lintel To Carry Brickwork

Windows (0.73w/m²k) :
UPVC Argon Filled Triple Glazed Windows Shall Be Fitted To Manufacturer's Specification.

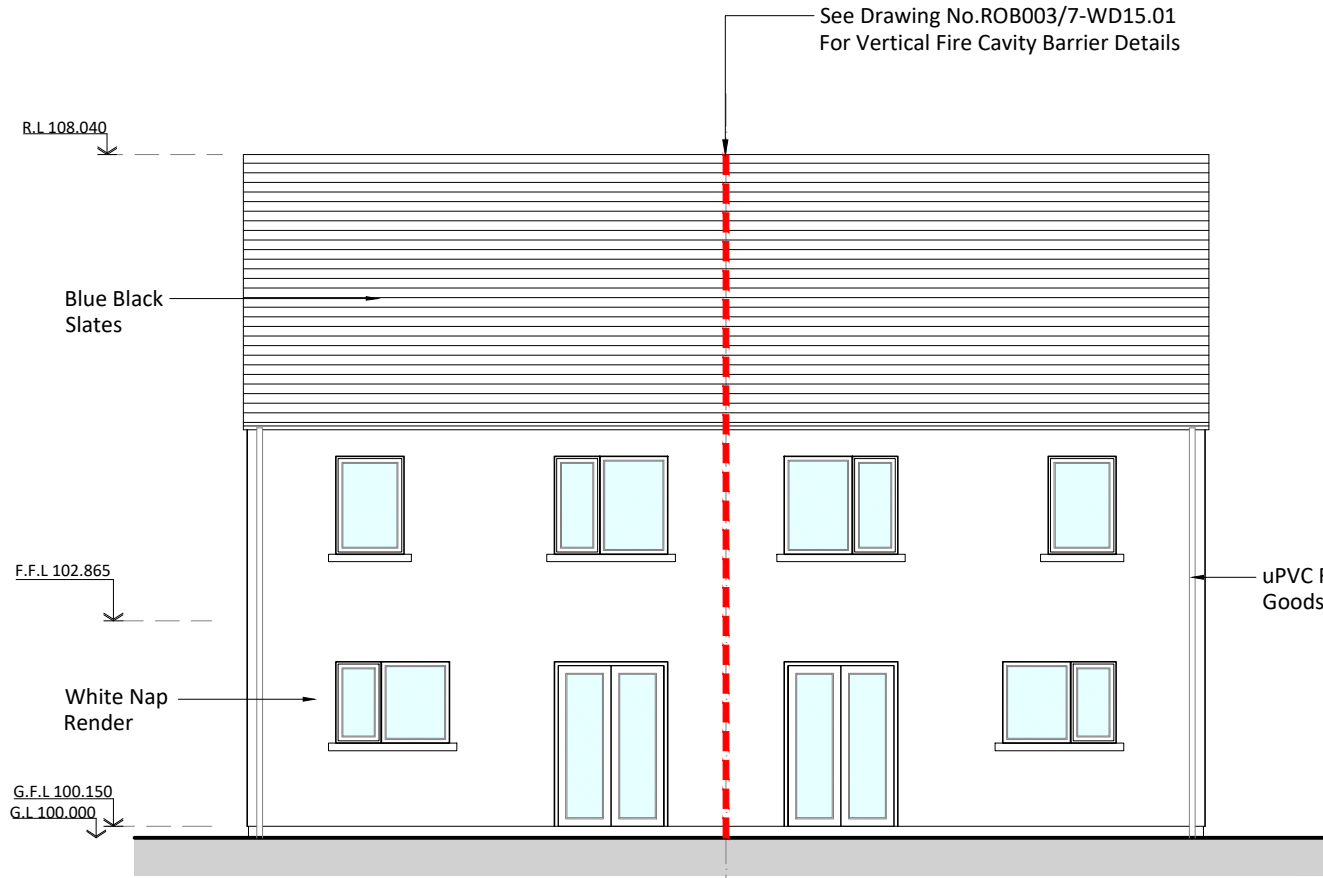
Internal Partitions :
Painted Skim Finish On Scratch Coat Plaster To Either Side Of 100x215x440mm Blockwork Wall

375mm Rising Blockwork Shall Be Laid In Courses, Comprising Of 150x215x440mm Concrete Block And 100x215x440mm Concrete Block Laid On The Flat As Shown. Quinlite Blocks To Be Used Where Indicated

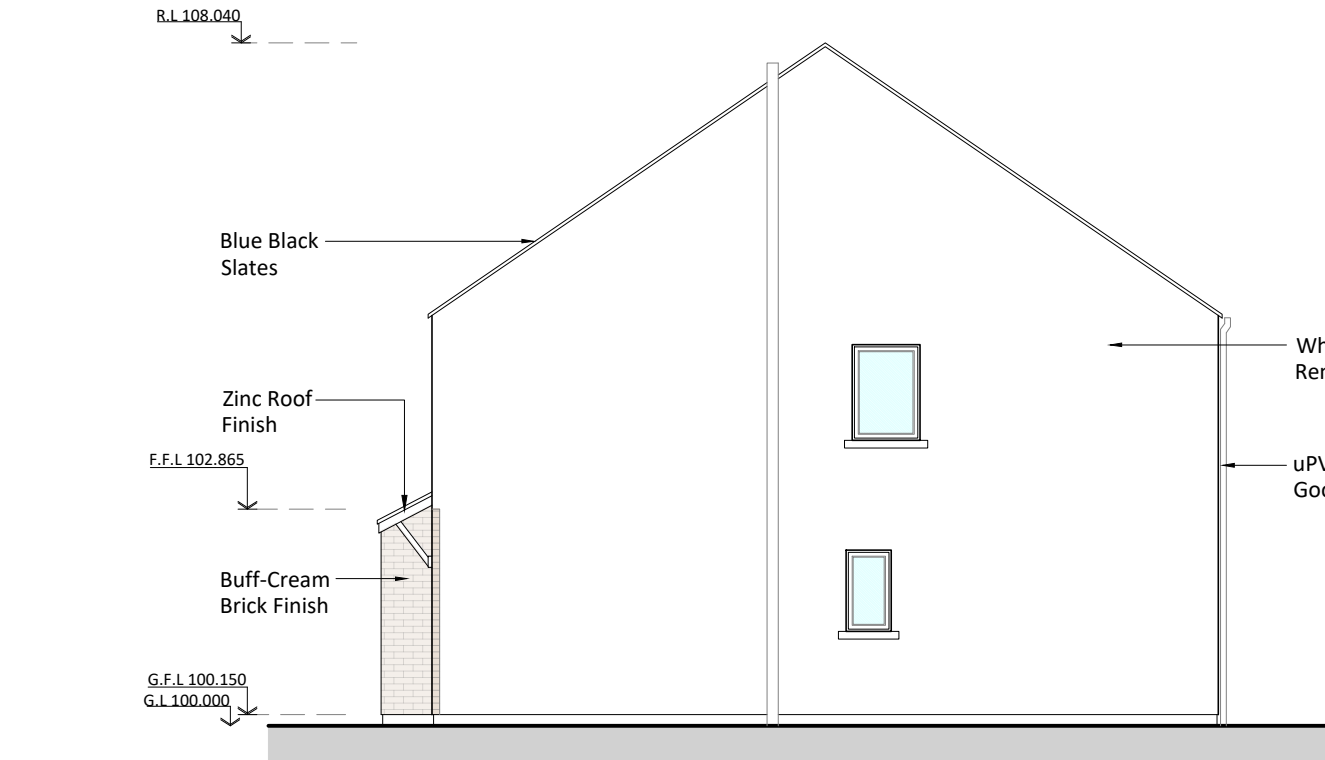
400x1000mm c25/35n Strip Foundation To Be Reinforced With Heavy Duty A393 Gauge Mesh With 400mm Overlap & 75mm Cover To Be Confirm On Inspected Of Site Ground Conditions Prior To Pouring Of Foundations



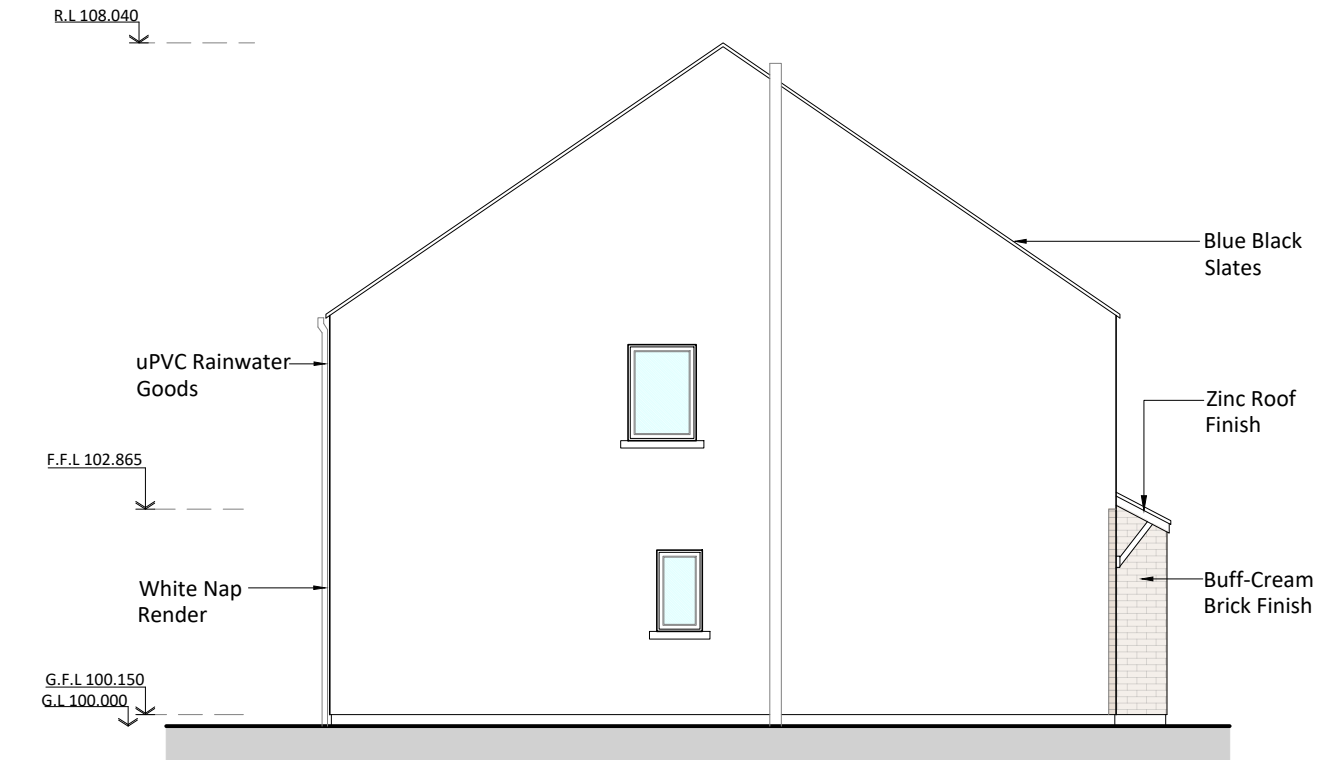
03 Front Elevation
9.01 Scale 1:100



04 Rear Elevation
9.01 Scale 1:100



05 Side Elevation
9.01 Scale 1:100

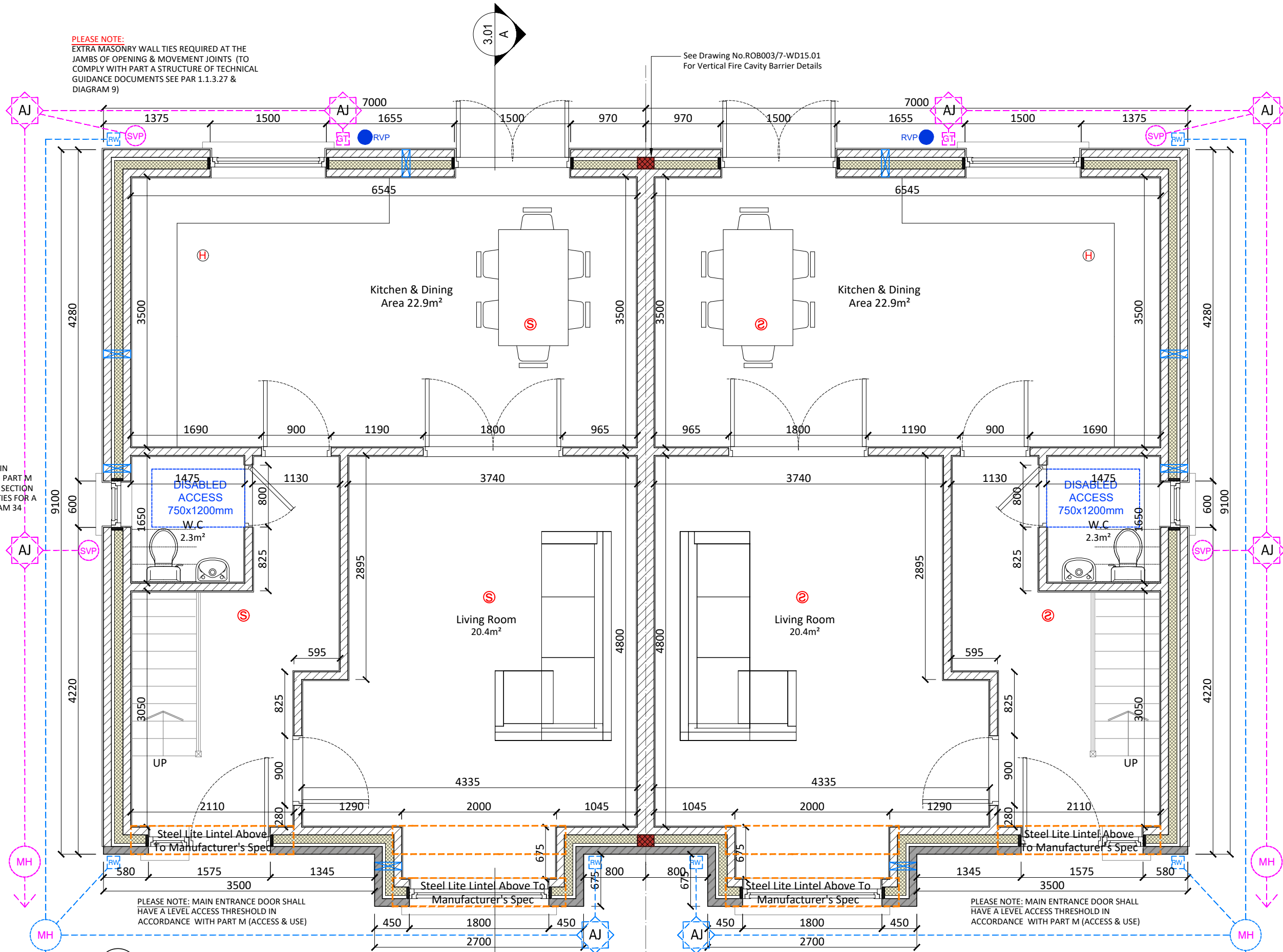


06 Side Elevation
9.01 Scale 1:100

PLEASE NOTE:
EXTRA MASONRY WALL TIES REQUIRED AT THE JAMBS OF OPENING & MOVEMENT JOINTS (TO COMPLY WITH PART A STRUCTURE OF TECHNICAL GUIDANCE DOCUMENTS SEE PAR 1.1.3.27 & DIAGRAM 9)

See Drawing No. ROB003/7-WD15.01 For Vertical Fire Cavity Barrier Details

PLEASE NOTE:
W.C. SHALL COMPLY IN ACCORDANCE WITH PART M (ACCESS & USE), SEE SECTION 3.4 SANITARY FACILITIES FOR A DWELLING & DIAGRAM 34 (OPTION A & B)

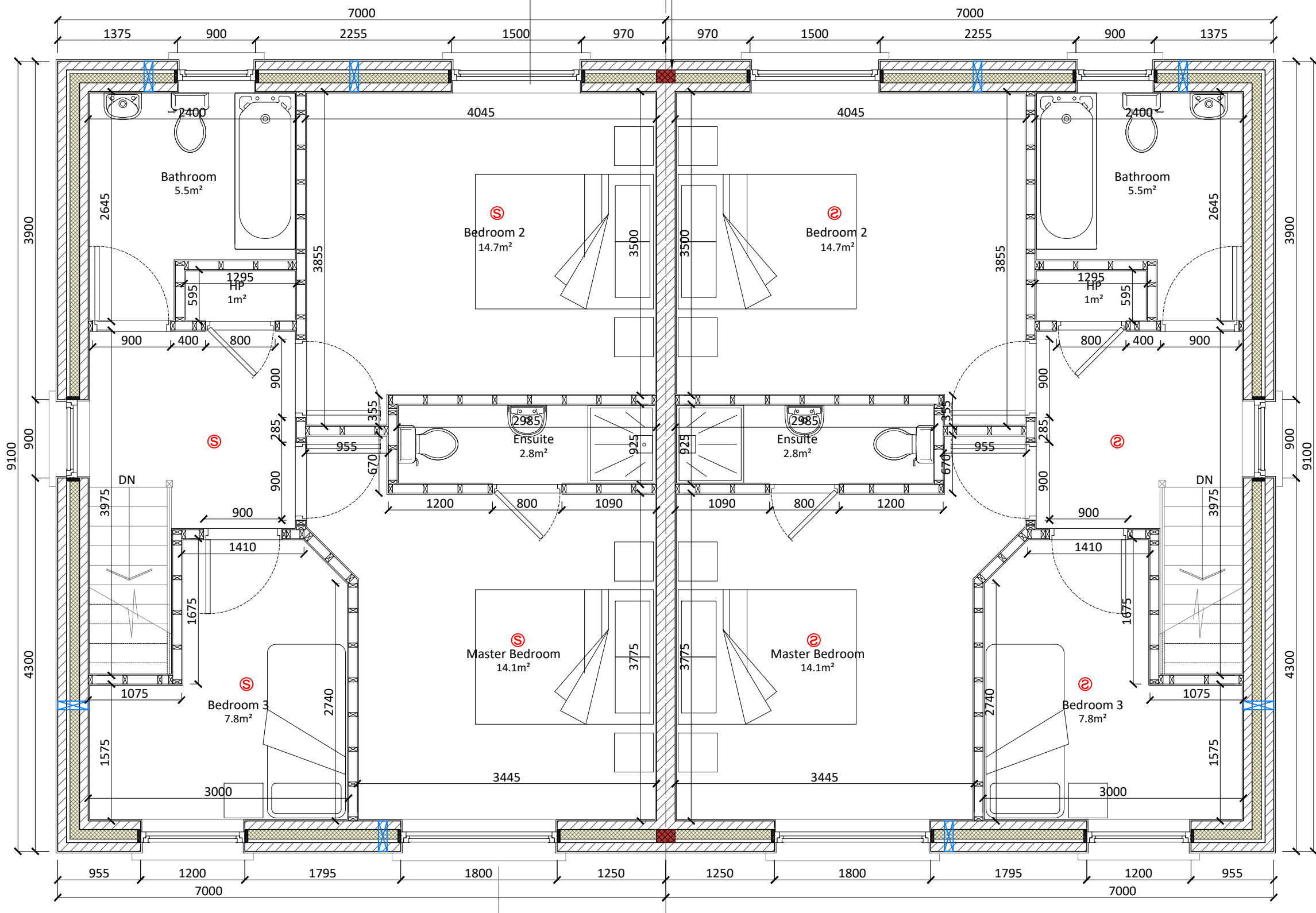


01 Ground Floor Plan
3.01 Scale 1:50

FIRE LEGEND:	
30 MINUTE FIRE RESISTANT [FD 30]	
DOOR SET FITTED WITH OVERHEAD SELF CLOSURES	
30 MINUTE FIRE RATED CONSTRUCTION COMPARTMENT WALL	
60 MINUTE FIRE RATED CONSTRUCTION COMPARTMENT WALL	
12.5 GYPSUM FIRELINE PLASTERBOARD	
SMOKE DETECTOR	Ⓢ
HEAT DETECTOR	Ⓜ
Drainage Legend:	
Foul Water Drainage	
Surface Water Drainage	
Manhole	MH
Surface Access Junction	AJ
Foul Access Junction	AJ
Soil Vent Pipe	SVP
Gully Trap	GT
Rainwater Down Pipe & Gully Trap	RWP
Radon Vent Pipe	RVP

PLEASE NOTE:
EXTRA MASONRY WALL TIES REQUIRED AT THE JAMBS OF OPENING & MOVEMENT JOINTS (TO COMPLY WITH PART A STRUCTURE OF TECHNICAL GUIDANCE DOCUMENTS SEE PAR 1.1.3.27 & DIAGRAM 9)

See Drawing No. ROB003/7-WD15.01 For Vertical Fire Cavity Barrier Details



02 First Floor Plan
3.01 Scale 1:50



House Nos : 33, 34, 35 & 36

HOUSE TYPE J : 3 BEDROOM
SEMI-DETACHED
TOTAL FLOOR AREA: 111.5m²/ 1200ft²

T: 053 9430806 E: info@molloyarchitecture.ie www.molloyarchitecture.ie

PROJECT Proposed Housing Development

TITLE House Type J: 3 Bed Semi-Detached (Contract Issue)

CLIENT Tom & Pat Redmond

ADDRESS Ballynerrin, (Marlton) Wicklow Town, Co. Wicklow

DRAWN BY DR	CHK BY	DATE 10-04-24
SCALE (@ A1) 1:50/100	PROJECT NUMBER ROB003/7	REV A

DRAWING NUMBER ROB003/7 -WD09.01

Rev	Description	Date