

For Sale

Lisdrumneill, Fairymount, Castlerea

Co. Roscommon. F45 K589

3 Bedrooms| Detached Bungalow

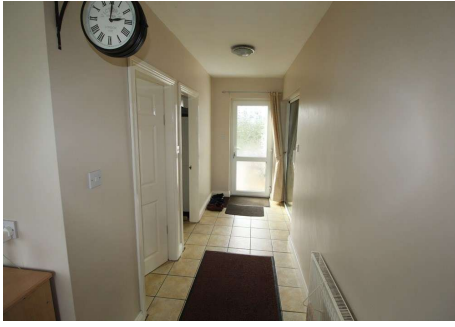
1216 sqft (113 sqm)



Offers in the Region of €130,000

Spacious three bedroom bungalow residence in pristine condition with extensive range of outbuildings to rear altogether standing on c. 1.14 acres. The residence stands on a corner site with excellent views of the surrounding countryside. Located convenient to the towns of Castlerea and Ballaghaderreen and close to Ireland West Airport Knock, the auctioneer invites enquiries and offers for immediate sale. Accommodation includes reception hallway, sitting room, living room, back hallway, kitchen/dining room, utility, bedrooms three in all with one en-suite and bathroom.

To arrange a viewing contact the office on 090-6663700
Viewings at evenings, weekends and Bank Holidays also accommodated



Porch to Front

Reception Hallway

24'7" (7.49m) x 3'10" (1.17m) Upvc door to, carpeted, hotpress (airing cupboard off)

Sitting Room

13'10" (4.22m) x 10'0" (3.05m) Tiled open fireplace with wooden outset and gas fire, carpeted, coving, centre light



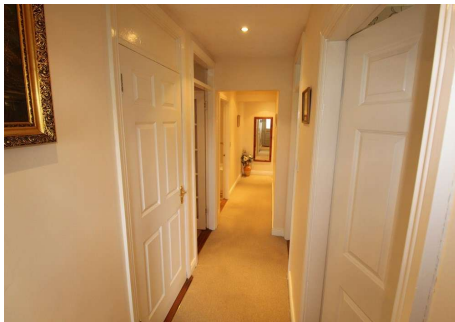
Living Room

14'6" (4.42m) x 9'7" (2.92m) Carpeted, coving, solid fuel stove (assists heating)



Kitchen/ Dining Room

14'0" (4.27m) x 10'2" (3.1m) Fully fitted kitchen including built in cooker, gas hob, extractor fan, dishwasher, Stanley oil stove cooker (assists heating), fridge, coving, inset tiling



Back Hallway

7'6" (2.29m) x 4'8" (1.42m) Door to kitchen/dining, living room and utility

Utility

22'5" (6.83m) x 10'10" (3.3m) Tiled floor, door to rear, built in units, incorporating W.C. – toilet, wash hand basin, incorporating cloakroom with indoor Worcester boiler



Bedroom 1

13'10" (4.22m) x 11'10" (3.61m) Carpeted, coving, incorporating en-suite, toilet, wash hand basin, shower, tiled floor, part wall tiling

Bedroom 2

14'0" (4.27m) x 10'0" (3.05m) Carpeted, coving

Bedroom 3

10'6" (3.2m) x 7'9" (2.36m) Carpeted, coving

Bathroom

7'5" (2.26m) x 5'10" (1.78m)

Toilet, wash hand basin, bath with shower over, tiled floor, part wall tiling



- Patio area to rear with canopy
- Laid lawns, large garden/paddock to front, Range of flower and shrubbery beds
- Driveway kerbed and stoned, extends around house, Hedging/fencing to boundaries
- Cast iron gates
- Cast iron gates at entrance
- Fuel shed 26` x 13` – set out in two, stove inset in corner
- Stables 15`8` x 8` – door to front and rear







