

# For Sale

Asking Price: €490,000



57 Wilton Manor

Rathnew

Co Wicklow

A67 CC63

--View & Make offers directly on [MySherryFitz.ie](https://www.MySherryFitz.ie)--

BER B2

[MySherryFitz.ie](https://www.MySherryFitz.ie)



Sherry  
fitzGerald  
Catherine O'Reilly



This magnificent family home comes to the market in exceptional condition, with attention to detail evident throughout. Laid out over three floors this is a very large home with ample space for family living.

Bright and modern - and immaculately decorated throughout - this home is sure to impress. As you enter through the front door, the light and space on offer is plain to see. There is a large living room to the front and a wonderful family kitchen and dining area to the rear. The four spacious bedrooms are laid out over the next two floors, with the top floor allowing space for a principal bedroom suite, with bedroom, dressing room and wonderful bathroom.



To the rear the garden is beautifully landscaped and the perfect spot to sit and relax on a summer's day.

Ring our team on (0404) 66466 if you want to know more or schedule a viewing!



## Special Features & Services:

- 

## Accommodation:

**Entrance Hallway** Large bright entrance hall way with porcelain tiled flooring and understairs storage.

**Kitchen** This wonderful kitchen is sure to inspire. Extensive timber painted units with large island unit, granite worktops and polished porcelain tiled flooring. French doors lead to the sheltered and landscaped rear garden. This high ceiling with Velux windows ensure this room is bright and welcoming, while there is ample space for large dining table - perfect for family meals.

**Living Room** Spacious living room with walnut laminate flooring and electric fireplace. Large window overlooking the front.

**Dining area** The dining area is exceptionally bright, with garden views and tiled flooring.

**Guest wc** Spacious guest wc with wheelchair accessibility, tiled floor, wc and whb.

**Utility Room** Fully fitted with excellent storage space. Plumbed for washing machine and tumble dryer. Door to side of property.

**Bedroom 1** On the top floor of this wonderful family home, the entire floor has been dedicated to providing a superb suite. The expansive double bedroom has views to the front.

**Dressing Room** Very spacious, walk in dressing room and wardrobes space. Ample room for those with even the largest collection of clothes!

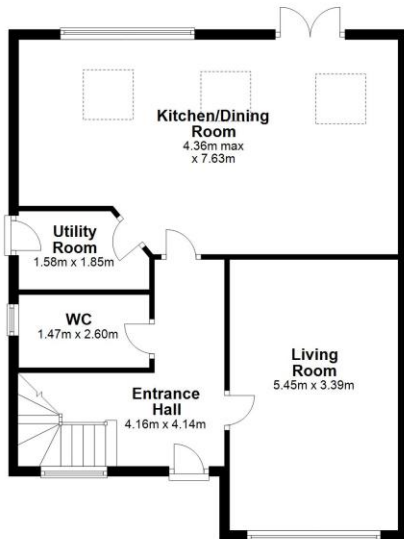
## Garden:

**BER:** BER B2, BER No. 107407879

## Directions:



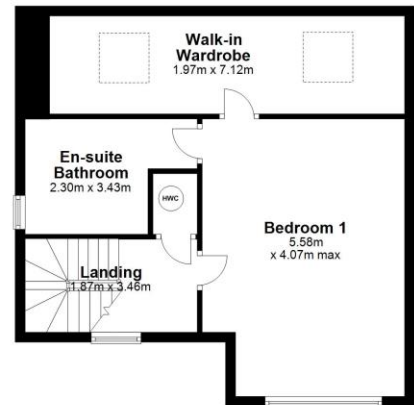
Ground Floor



First Floor



Second Floor



Total area: approx. 173.6 sq. metres



**NEGOTIATOR**

Sherry FitzGerald Catherine O'Reilly  
1 Bridge Street Arcade, Fitzwilliam Square,  
Wicklow Town

**0404 66466**  
**info@sfcatherineoreilly.ie**

**MySherryFitz.ie**



**CONDITIONS TO BE NOTED:** A full copy of our general brochure conditions can be viewed on our website at <http://www.sherryfitz.ie/terms> or can be requested from your local Sherry FitzGerald office. We strongly recommend that you familiarize yourself with these general conditions.  
PSRA Registration No. 003161