

# For Sale

Asking Price: €850,000

**Sherry  
FitzGerald**  
O'Neill



'Two Trees' & 'The Barn',  
Dromkeal, Ballylickey, Co Cork.

BER C3

[sherryfitz.ie](http://sherryfitz.ie)





### **TWO EXCEPTIONAL COASTAL RESIDENCES IN BALLYLICKY, WEST CORK**

Exceptional Residence and guest cottage on 3.5 acres approx., of mature landscaped gardens, located at Ballylickey, just 3 miles from the vibrant harbour town of Bantry and 5 miles from the picturesque village of Glengarriff. Two Trees and The Barn offer an exceptional opportunity to experience timeless charm and modern comfort in a spectacular natural setting.

#### **Two Trees**

A gracious and spacious five-bedroom residence, Two Trees blends classical architectural elements with stylish contemporary touches. The many features include exposed beamed ceilings, oak flooring, hardwood doors, and ornate detailing. The home creates a warm and refined atmosphere.

The ground floor includes a welcoming entrance porch, large kitchen and dining area, sitting room, living room, study, southwest-facing sunroom, guest bedroom, guest bathroom, and utility room.

Upstairs hosts four generously sized bedrooms including a spacious bedroom with en-suite and dressing room, library and a spacious bathroom. The home is designed for both relaxed family living and elegant entertaining.







### The Barn

Adjacent to the main house, The Barn is a fully restored three-bedroom cottage that exudes character. With an open-plan kitchen, dining, and living space complete with an open fireplace, the cottage offers a cozy, luxurious retreat. The ground floor features an en-suite bedroom, guest WC, and a practical store, while upstairs includes two more well-appointed bedrooms and a family bathroom. It can serve as a private guesthouse or be seamlessly integrated with the main home for expanded living.

### Grounds

The residences are set amidst beautifully landscaped grounds featuring mature trees, manicured lawns and natural hedging. A charming single-storey wooden cabin offers the perfect space for a studio, workshop, or creative haven. The grounds also feature a unique outdoor sculpture, adding an artistic focal point and further enhancing the property's distinct character and appeal.

The property represents a rare blend of rustic charm, modern luxury, and creative inspiration—set in one of Ireland's most scenic coastal landscapes.



FLOOR PLAN – TWO TREES

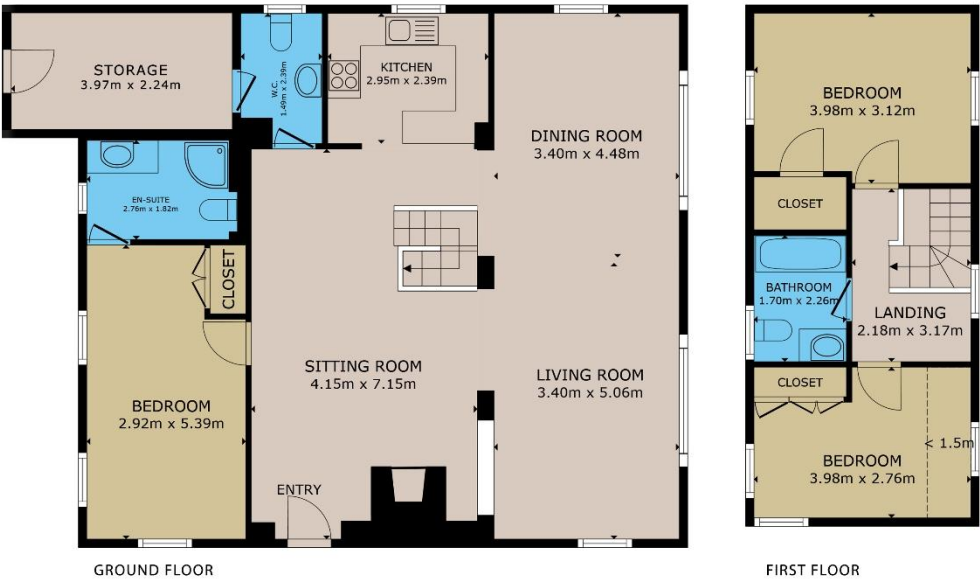


GROSS INTERNAL AREA

TOTAL : 271.24m<sup>2</sup>

Whilst every attempt has been made to ensure the accuracy of the floor plan contained here, measurements of doors, windows, rooms and any other items are approximate and no responsibility is taken for any error, omission, or misstatement. This plan is for illustrative purposes only and should be used as such by any prospective purchaser.

FLOOR PLAN – THE BARN



GROSS INTERNAL AREA

TOTAL : 136.53 m<sup>2</sup>

Whilst every attempt has been made to ensure the accuracy of the floor plan contained here, measurements of doors, windows, rooms and any other items are approximate and no responsibility is taken for any error, omission, or misstatement. This plan is for illustrative purposes only and should be used as such by any prospective purchaser.





#### NEGOTIATOR

Olivia Hanafin  
Sherry FitzGerald O'Neill  
Wolfe Tone Square, Bantry  
Co Cork  
T: 027 31030  
E: [info@sfoneill.ie](mailto:info@sfoneill.ie)

#### VIEWINGS

Strictly By Appointment Only

#### ENERGY RATING

BER: C3 (Main House)  
Cert No.: 116117896  
EPI: 205.73 kWh/m<sup>2</sup>/yr

[sherryfitz.ie](http://sherryfitz.ie)  
[sfoneill.ie](http://sfoneill.ie)  
[myhome.ie](http://myhome.ie)  
[daft.ie](http://daft.ie)  
[propgoluxury.com](http://propgoluxury.com)

**CONDITIONS TO BE NOTED:** A full copy of our general brochure conditions can be viewed on our website at <http://www.sherryfitz.ie/terms>, or can be requested from your local Sherry FitzGerald office. We strongly recommend that you familiarise yourself with these general conditions. While care has been taken to ensure that information contained in Sherry FitzGerald publications is correct at the time of publication, changes in circumstances after the time of publication may impact on the accuracy of this. PSRA Registration No. 004158