

For Sale

Asking Price: €310,000

Sherry
FitzGerald
O'Neill



Chapel Court, Skibbereen,
Co. Cork

BER A2

sherryfitz.ie



Chapel Court features a superb collection of A rated, semi-detached dwellings. The development is adjacent to the vibrant West Cork market town of Skibbereen and is within walking distance of local amenities.

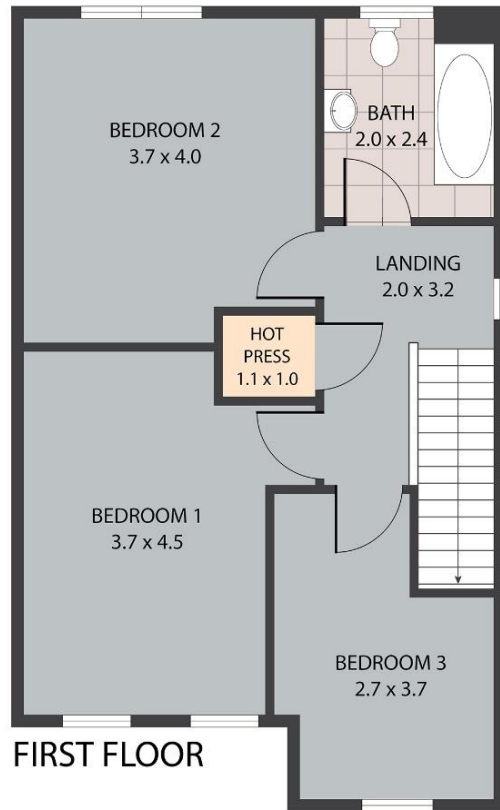
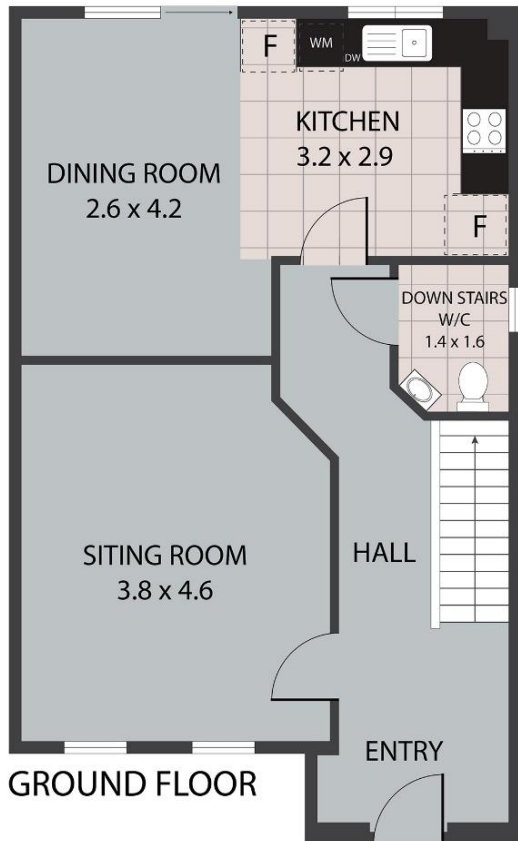
The houses are of modern ICF construction with double glazed windows and a high level of insulation throughout. Internally, the houses are finished to an exceptionally high standard to include fitted kitchens and bathroom and having part timber and part carpet flooring.

This development qualifies for the Help to Buy Scheme and for the new Shared Equity Scheme. For more information on how the new Shared Equity Scheme could work for you, please visit: <https://www.sherryfitz.ie/advice/first-home-scheme>

Skibbereen is a thriving market town and has much to offer including great schools, restaurants & pubs and unique shops. The town still retains its local, colourful and friendly feel and is only 5 kms from the nearest beach. West Cork's popular coastal villages are within a short commute and Cork airport is 75km away.

The show house is available for viewing by appointment.





13 Chapel Court, Skibbereen P81 Y209

TOTAL APPROX. FLOOR AREA 108 SQ.M

Whilst every attempt has been made to ensure the accuracy of the floor plan contained here, measurements of doors, windows, rooms and any other items are approximate and no responsibility is taken for any error, omission, or misstatement. This plan is for illustrative purposes only and should be used as such by any prospective purchaser.



NEGOTIATOR
Hugh O'Neill
Sherry FitzGerald O'Neill
37 North Street, Skibbereen,
Co Cork
T: 028 21404
E: info@sfoneill.ie

VIEWING
Strictly By Appointment Only

ENERGY RATING
BER: A2

sherryfitz.ie
sfoneill.ie
myhome.ie
daft.ie
rightmove.co.uk

CONDITIONS TO BE NOTED: A full copy of our general brochure conditions can be viewed on our website at <http://www.sherryfitz.ie/terms>, or can be requested from your local Sherry FitzGerald office. We strongly recommend that you familiarise yourself with these general conditions. While care has been taken to ensure that information contained in Sherry FitzGerald publications is correct at the time of publication, changes in circumstances after the time of publication may impact on the accuracy of this. PSRA Registration No. 004158