

Spectacular Coastal Property on c.5 acres with Development Potential

Myrtleville, Co Cork, P43 X573



Spectacular Coastal Property on c.5 acres with Development Potential

Myrtleville, Co Cork, P43 X573



Spectacular Coastal Property on c.5 acres with Development Potential

Myrtleville, Co Cork, P43 X573



About this property

This spectacular coastal property on 2.14 hectares (5.28 acres), built originally as a family home in 1824, has enviable ocean views. This unique property now comes to the market ready for an exciting new chapter. The site set high on the rugged cliff overlooking Myrtleville Bay and the large span of Atlantic ocean which sits just outside Cork Harbour. The wide vista encompasses the local sandy beach of Myrtleville, the rugged coast beneath Fennells Bay, the headland of Crosshaven, Roches Point, Power Head and Ballycotton to the east and Ringabella headland to the west.

Dramatic and picturesque, this site wraps almost half a kilometre around the coastline and overlooks rugged rocks below with deep blue sea, perfectly calm with a gentle roll on a sunny summer's day while the white horses of a windy day crash on the shore creating completely different but just as stunning scenery.

The potential of this site is endless. Premium homes have been constructed or renovated in this particular stretch of coastline over the last number of years, but none with such a dramatic and private setting. Perfect for a premium one-off residence the site is beautifully tucked

away under the hill with a long wide driveway and adjoining gardens, all overlooking the sea. This extensive access ensures further potential for a niche residential development or indeed a high-end boutique hotel where ocean views would be at a premium.

This is one of the most unique properties to come available on the Cork coastline in recent years.

Spectacular Coastal Property on c.5 acres with Development Potential

Myrtleville, Co Cork, P43 X573

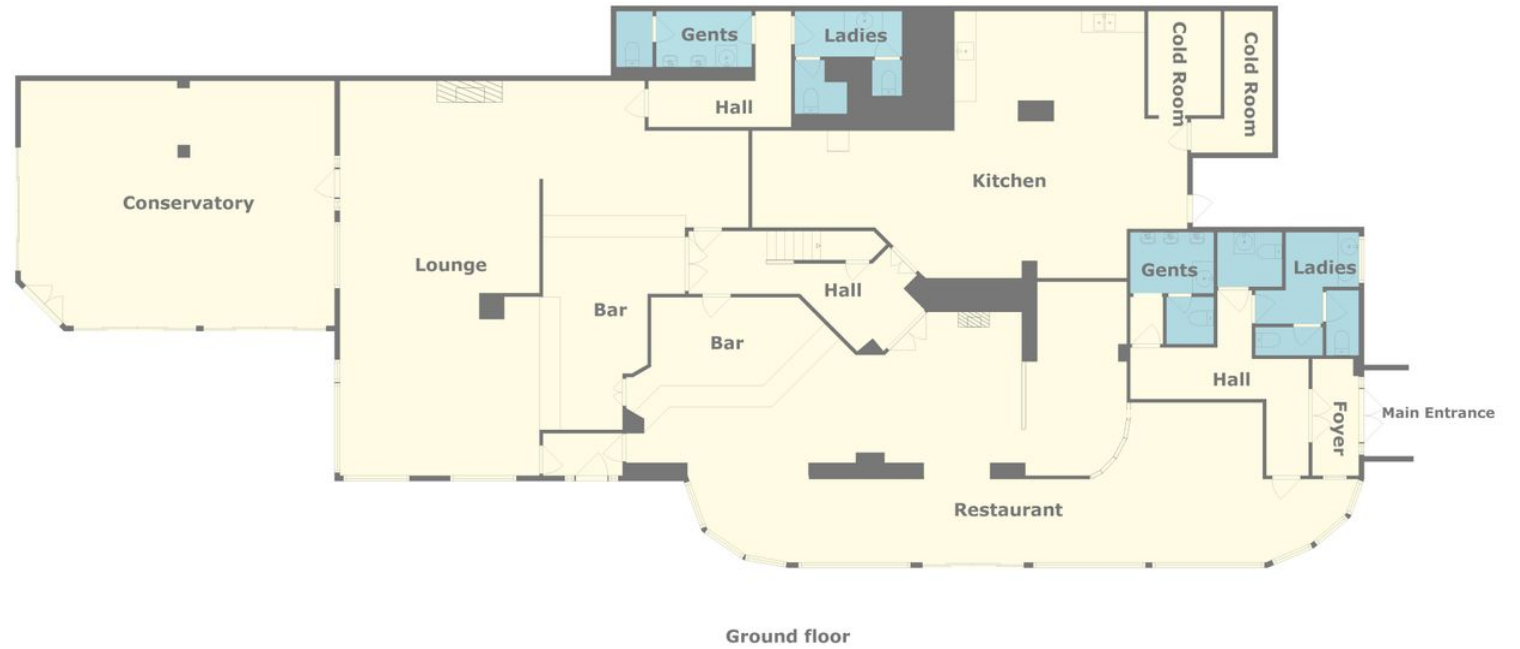


Spectacular Coastal Property on c.5 acres with Development Potential

Myrtleville, Co Cork, P43 X573



Plans

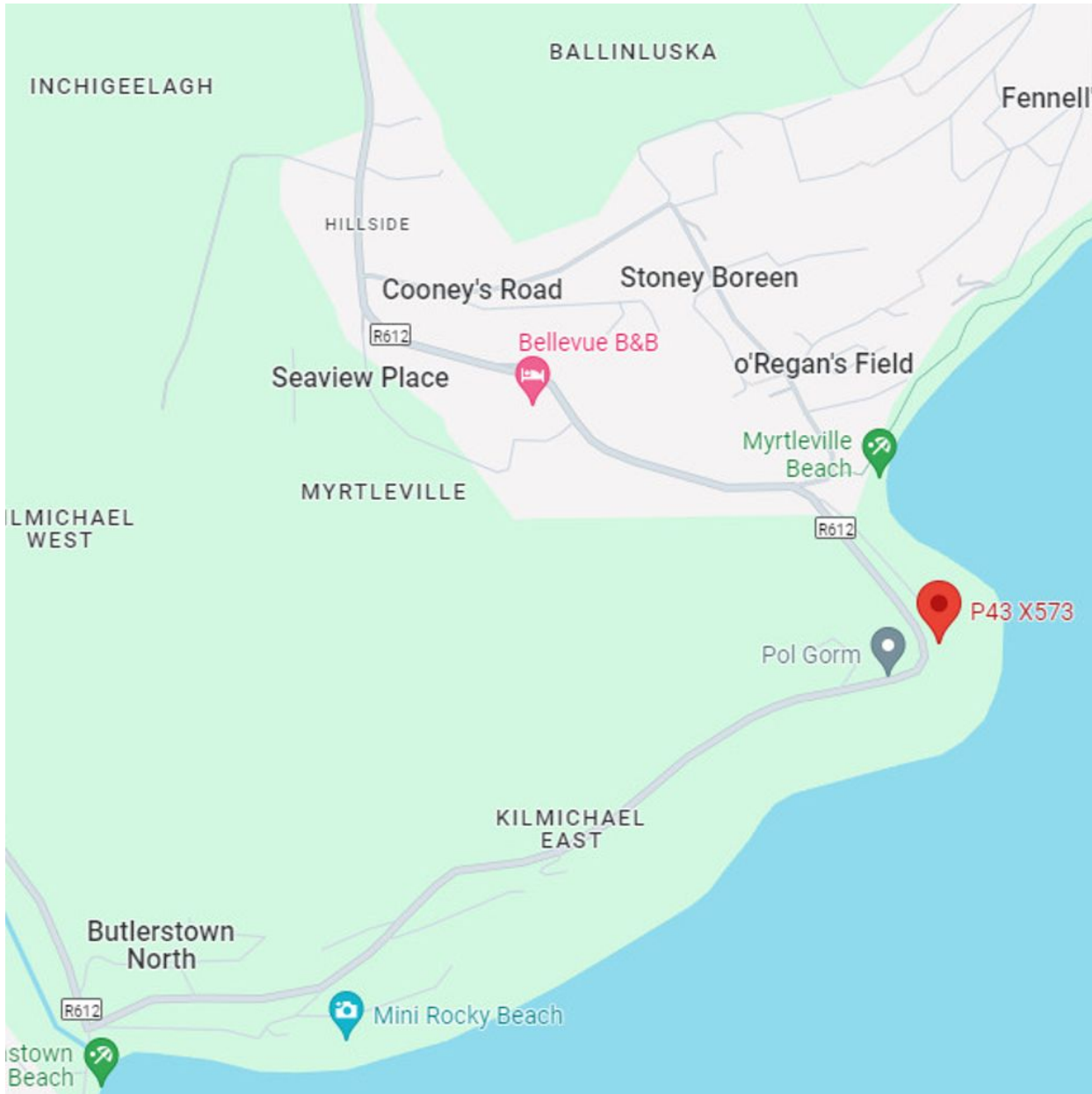


Measurements Are Approximate. Floor Plan Is To Be Used For Illustrative Purposes Only



Spectacular Coastal Property on c.5 acres with Development Potential

Myrtleville, Co Cork, P43 X573



Local Area

On the south coast of Ireland with Atlantic Ocean views where you can watch the cruise ships and all other marine traffic arriving at the mouth of Cork Harbour. Two sandy beaches Myrtleville and Fountainstown are popular swimming spots while Crosshaven, home to The Royal Cork Yacht Club, the oldest sailing club in the world is only 4.5km away. From this spectacular site, you can watch the whales, dolphins and other wildlife which are common visitors to the Cork harbour area every summer.



Spectacular Coastal Property on c.5 acres with Development Potential

Myrtleville, Co Cork, P43 X573



Property Details

Key Features

Iconic Coastal Site with development potential

Approx. 2.14 hectares / 5.28 acres

Secluded site with panoramic ocean views

Approx. 573.1sq m / 6,168sq ft

Overlooking Myrtleville Beach

Long Wide driveway ensuring maximum privacy

Double garage with enclosed yard

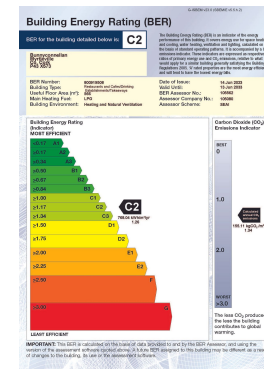
Extensive arking area close to the entrance.

Dilapidated living accommodation to rear

Services & Additional Information

BER

BER Rating = C2



Spectacular Coastal Property on c.5 acres with Development Potential

Myrtleville, Co Cork, P43 X573



Enquire



Catherine McAuliffe

Cork

+353 (0) 87 823 0451

catherine.mcauliffe@savills.ie

More Information



[View on website](#)



[View Digital Brochure](#)



[Property Search](#)

Viewing strictly by appointment

Property Ref: CKK230197



Important Notice: Savills, its clients and any joint agents give notice that 1: They are not authorised to make or give any representations or warranties in relation to the property either here or elsewhere, either on their own behalf or on behalf of their client or otherwise. They assume no responsibility for any statement that may be made in these particulars. These particulars do not form part of any offer or contract and must not be relied upon as statements or representations of fact. 2: Any areas, measurements or distances are approximate. The text, photographs and plans are for guidance only and are not necessarily comprehensive. It should not be assumed that the property has all necessary planning, building regulation or other consents and Savills have not tested any services, equipment or facilities. Purchasers must satisfy themselves by inspection or otherwise. *powered by* **FluxPro**