

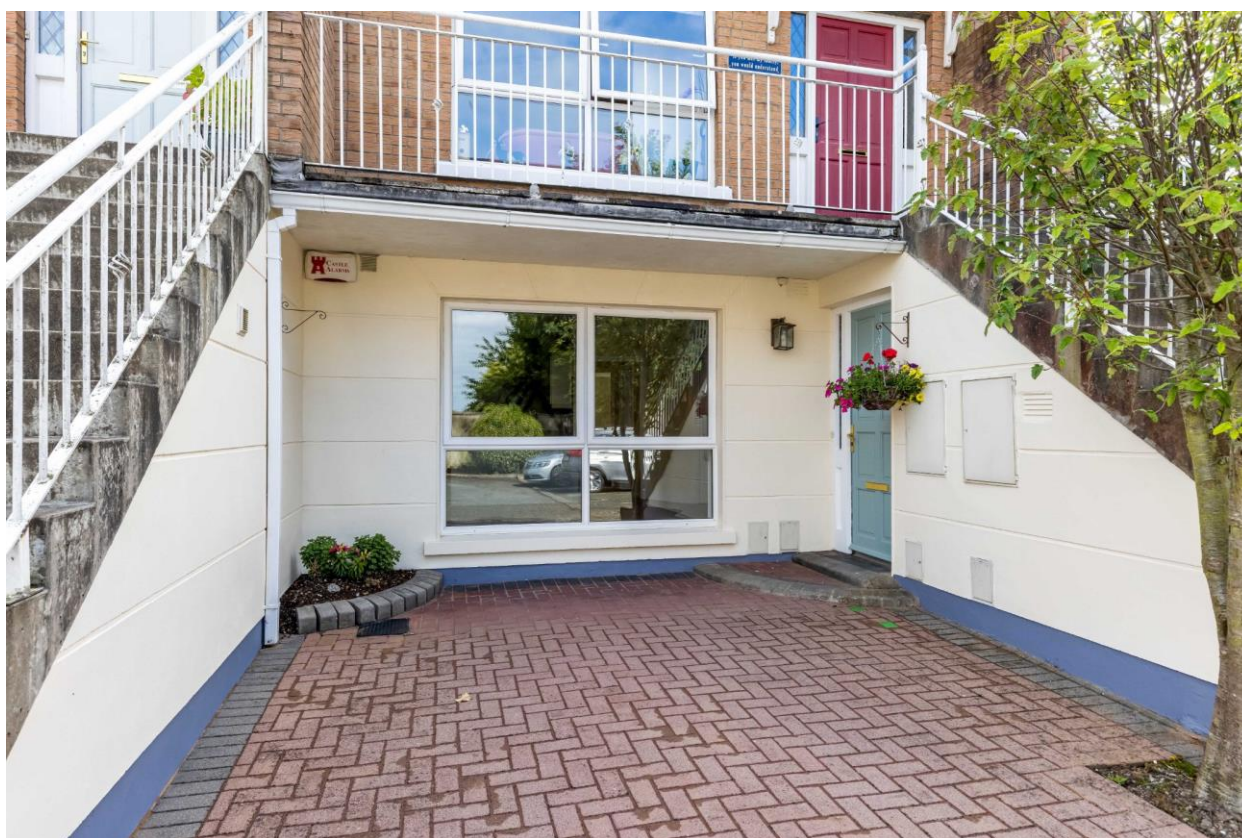
For Sale

Asking Price: €235,000



11 Marble Court,
Dunshaughlin, Co Meath,
A85 PH99

sherryfitz.ie



Sherry FitzGerald Sherry are excited to present 11 Marble Court to the market.

No. 11 Marble Court is a two-bedroom, ground floor, own front door apartment presented in pristine condition throughout and located in an exclusive development in the heart of Dunshaughlin Village.

Ready for immediate occupancy bright and spacious accommodation encompasses an open-plan kitchen/ dining/ living room, two double bedrooms and a family bathroom.

This unique apartment benefits from a generous outdoor space which is accessed from the rear of the property and also its own driveway to the front of the property.

No. 11 is located to the rear of this very settled development, which is minutes' walk from the Main Street of Dunshaughlin where schools, supermarkets, restaurants, boutiques etc. Commuting is very comfortable from Dunshaughlin as the M3 Parkway rail station at Pace is a 7 minute drive, as is access to the M3 which in turn, gives access to M50, Dublin and Airport. An enviable public bus service completes the picture for transport!

Viewing comes highly recommended!



Special Features & Services

- Ground floor
- Own front door
- Own driveway
- Private outdoor decking area
- Located to end of development
- Cul de sac
- Within walking distance of all amenities in Dunshaughlin Village

Accommodation

Entrance Hall

Brief entrance hallway with space for coats and storage leading to a door, giving access to the kitchen/ dining/ living room.

Kitchen Dining Room

A wonderful open plan kitchen/ dining/ living room to front of property.

Bathroom

Tiled bathroom with w.c., w.h.b and bathtub to side of property.

Bedroom 1

Double bedroom with built-in wardrobe to rear of property.

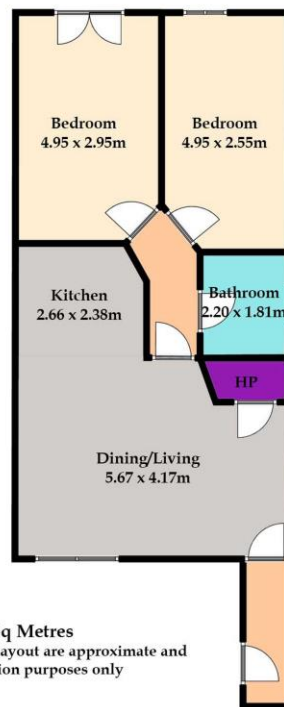
Bedroom 2

Master bedroom with built-in wardrobe and double doors leading to decking area.

Garden

This impressive apartment hosts its own private driveway to the front of the property and its own large, private decking area to the rear of the property.





NEGOTIATOR
Sabrina Purtill MIPAV MMCEPI
Sherry FitzGerald Sherry
Fingal House, Main Street,
Dunshaughlin, Co Meath
T: 01 8259452
E: info@sherryfitzsherry.ie

BER D1, BER No. 100931658

CONDITIONS TO BE NOTED: A full copy of our general brochure conditions can be viewed on our website at <http://www.sherryfitz.ie/terms>, or can be requested from your local Sherry FitzGerald office. We strongly recommend that you familiarise yourself with these general conditions. While care has been taken to ensure that information contained in Sherry FitzGerald publications is correct at the time of publication, changes in circumstances after the time of publication may impact on the accuracy of this. PSRA Registration No. 004319