

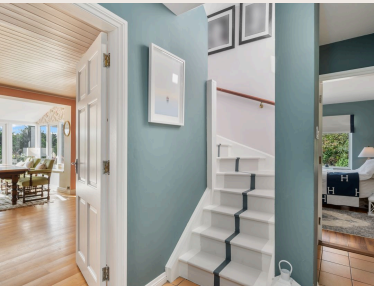
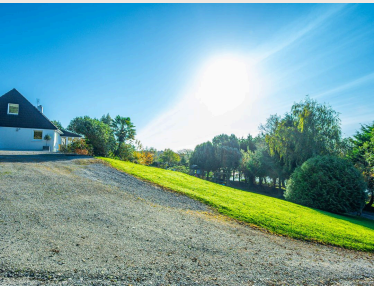
BEAUTIFUL DETACHED HOME COMMANDING WATER VIEWS

Misty Moorings, Cappagh, Kinsale, Co Cork, P17 HW73



BEAUTIFUL DETACHED HOME COMMANDING WATER VIEWS

Misty Moorings, Cappagh, Kinsale, Co Cork, P17 HW73



BEAUTIFUL DETACHED HOME COMMANDING WATER VIEWS

Misty Moorings, Cappagh, Kinsale, Co Cork, P17 HW73



About this property

Savills is delighted to present Misty Moorings, Cappagh, Kinsale. Overlooking the tranquil and majestic River Bandon, this four-bedroom detached residence offers an unparalleled blend of comfort, style, and natural beauty. Set on a sunny, south-facing site, Misty Moorings provides panoramic river views and sits within over an acre of meticulously landscaped, mature gardens. A botanical paradise, the gardens feature a diverse range of flora, from apple and plum trees to Scots pine, cherry blossom, hydrangeas, and camellias, providing year-round beauty. Designed for those who seek both privacy and luxury, this property features a private gated entrance and thoughtfully crafted outdoor spaces, including a stunning deck with an infinity pool that seamlessly merges with the captivating landscape.

For those with a love for water, a private boat mooring on the River Bandon waterfront is included in the sale, allowing residents easy access to Kinsale Harbour and the opportunity to embrace a riverside lifestyle. This rare feature is a highlight of the property, enhancing the sense of connection to Kinsale's maritime charm.

As you step through the front entrance, you're greeted by a spacious hallway leading to the main living room, a sunlit sanctuary for relaxation featuring an elegant open fire. Adjacent to this space is the spectacular

south-facing sunroom and dining room, where views of the river and gardens create an atmosphere of serenity.

At the heart of this home is a spacious kitchen fitted with quality appliances and ample workspace. Adjacent to the kitchen is a practical larder, providing convenient storage. The ground floor also features a tastefully tiled guest cloakroom and a dedicated home office, adding to the home's functional amenities. The main bedroom, located on the ground floor, includes an en-suite bathroom and offers a comfortable, private retreat. Upstairs, three generously sized double bedrooms and a modern shower room provide welcoming spaces for family living or guests, with each room benefiting from plenty of natural light.

Adjacent to the main house is a superb one-bedroom garden apartment, perfectly suited for family and visiting guests. The apartment features an open-plan living, dining, and kitchen area, a stylish bathroom, and a spacious double bedroom, all with stunning water views. It also enjoys its own private garden area, providing a tranquil outdoor space. Above the apartment is a versatile room, accessible via a separate entrance, ideal for use as a home office, studio, and/or private gym.

BEAUTIFUL DETACHED HOME COMMANDING WATER VIEWS

Misty Moorings, Cappagh, Kinsale, Co Cork, P17 HW73



Property Details

Located within walking distance of the vibrant town of Kinsale, this property combines the best of both worlds—a private riverside oasis with convenient access to local amenities. Kinsale, one of Ireland's most picturesque and historic towns, is internationally renowned as the 'Gourmet Capital of Ireland,' celebrated for its world-class culinary scene. The neighbouring Kinsale Equestrian Centre is a mere 300 meters away, while the renowned Blacks Brewery & Distillery is within 450 meters, offering craft brews, artisan pizza, and a warm community ambiance.

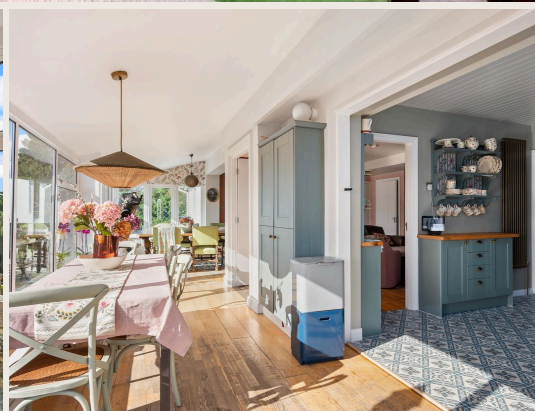
Misty Moorings is more than just a home; it's a lifestyle. Offering luxury, privacy, and a unique connection to the water, this exceptional property provides a true sanctuary in one of Ireland's most beautiful regions.



BEAUTIFUL DETACHED HOME COMMANDING WATER VIEWS

Misty Moorings, Cappagh, Kinsale, Co Cork, P17 HW73

savills



BEAUTIFUL DETACHED HOME COMMANDING WATER VIEWS

Misty Moorings, Cappagh, Kinsale, Co Cork, P17 HW73



Plans



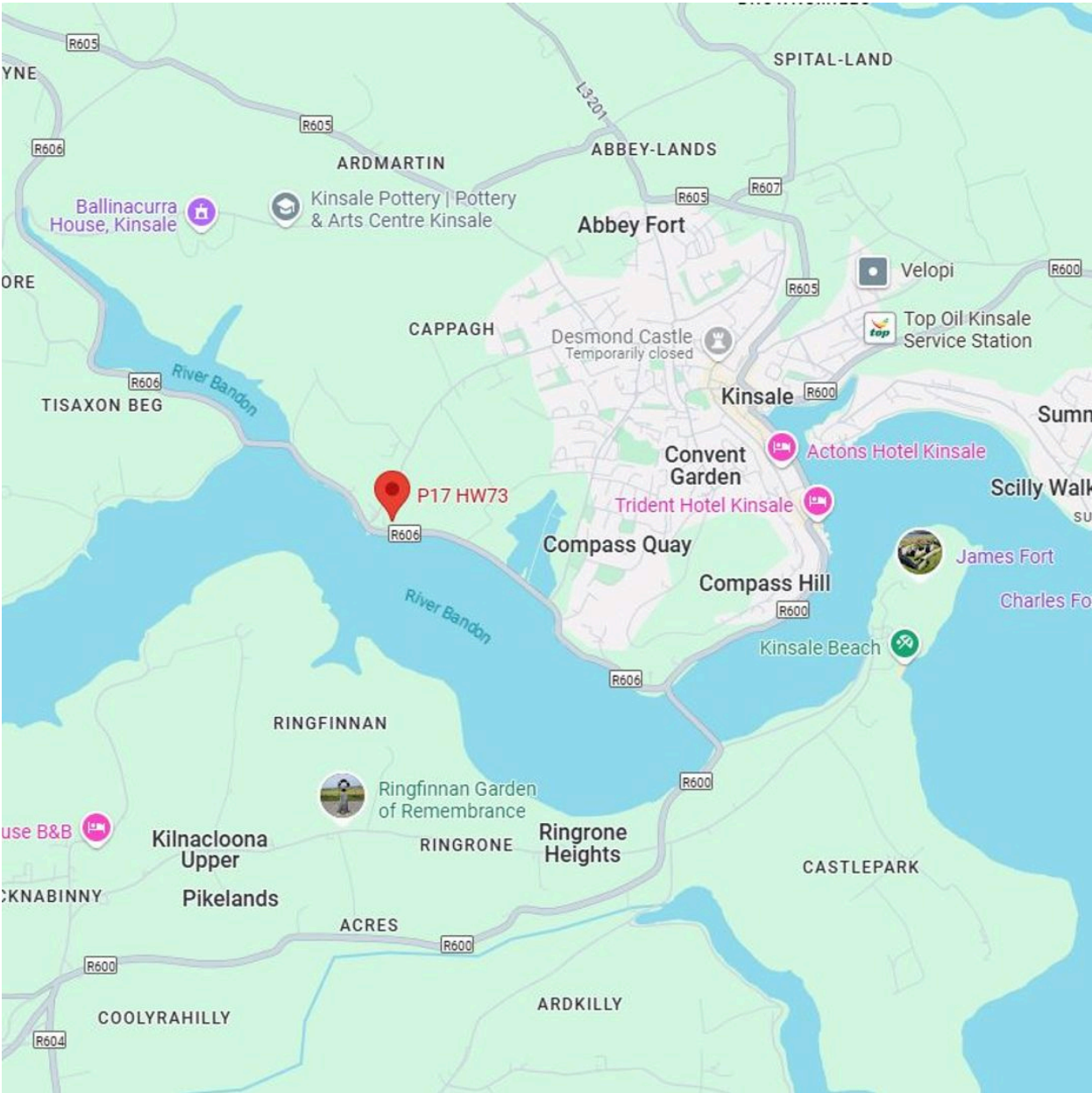
House Approx. 185 sq
m / 1,989 sq ft



Made with Metropix ©2024

BEAUTIFUL DETACHED HOME COMMANDING WATER VIEWS

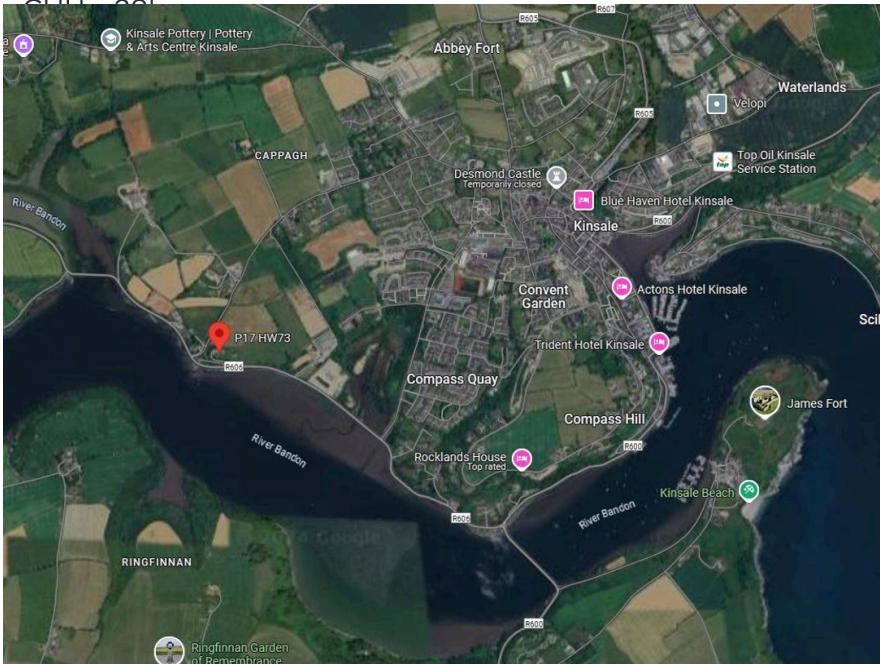
Misty Moorings, Cappagh, Kinsale, Co Cork, P17 HW73



Local Area

Approximate Distance to Amenities:

- Kinsale Equestrian Centre - 200m
- Blacks Brewery & Distillery - 350m
- Kinsale Gaelscoil - 1.2km
- Kinsale Community School - 1.7km
- Kinsale Town - 2.5km
- Castlepark Marina - 2.8km
- Bandon Grammar School - 21km
- Cork International Airport
- Cork City - 28km



BEAUTIFUL DETACHED HOME COMMANDING WATER VIEWS

Misty Moorings, Cappagh, Kinsale, Co Cork, P17 HW73



Property Details

Key Features

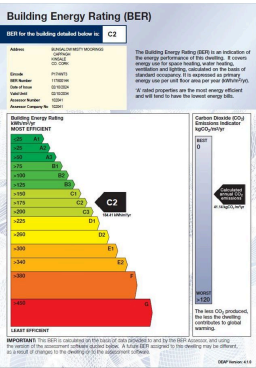
Beautiful Four Bed Detached Home
Approx. 185 sq m / 1,989 sq ft
Site Approx. 0.43 Ha / 1.08 acres
Private mooring
River & harbour views
Detached one bed apartment
(Approx., 48 sq m/527 sq ft)
Separate studio space (Approx. 35 sq
m/380 sq ft)
Private deck & Infinity Pool
GFCH/OFCH/CCTV
Fibre Broadband

Services & Additional Information

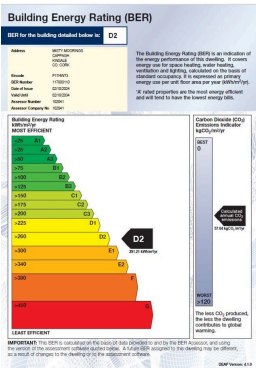
- Separate One Bedroom apartment / studio space
- Tool Shed/Barna Shed
- Private well water
- Septic Tank
- Automated private entrance gate
- New contemporary fitted kitchen (2024)
- Front windows (2006)
- Apartment/Studio (2002)
- Infinity Pool (2010)
- High speed fibre broadband

BER

BER Rating = N/A



BER Rating = D2



Local Authority
Cork County Council

Tenure
Freehold

BEAUTIFUL DETACHED HOME COMMANDING WATER VIEWS

Misty Moorings, Cappagh, Kinsale, Co Cork, P17 HW73



Enquire



Lawrence Sweeney
Cork
+353 (0) 83 116 7163
lawrence.sweeney@savills.ie

More Information



[View on website](#)



[View Digital Brochure](#)



[Property Search](#)

Viewing strictly by appointment

Property Ref: CKK220503

Cork

Penrose House, Penrose Dock, T23 V38E
+353 (0) 21 427 1371



Important Notice: Savills, its clients and any joint agents give notice that 1: They are not authorised to make or give any representations or warranties in relation to the property either here or elsewhere, either on their own behalf or on behalf of their client or otherwise. They assume no responsibility for any statement that may be made in these particulars. These particulars do not form part of any offer or contract and must not be relied upon as statements or representations of fact. 2: Any areas, measurements or distances are approximate. The text, photographs and plans are for guidance only and are not necessarily comprehensive. It should not be assumed that the property has all necessary planning, building regulation or other consents and Savills have not tested any services, equipment or facilities. Purchasers must satisfy themselves by inspection or otherwise. *powered by* **FluoPro**