

**For Sale**  
By Private Treaty

Guide Price  
**€P.O.A.**

**REA**  
**JOHN LEE**

**PRIME LAND HOLDING WITH POTENTIAL**



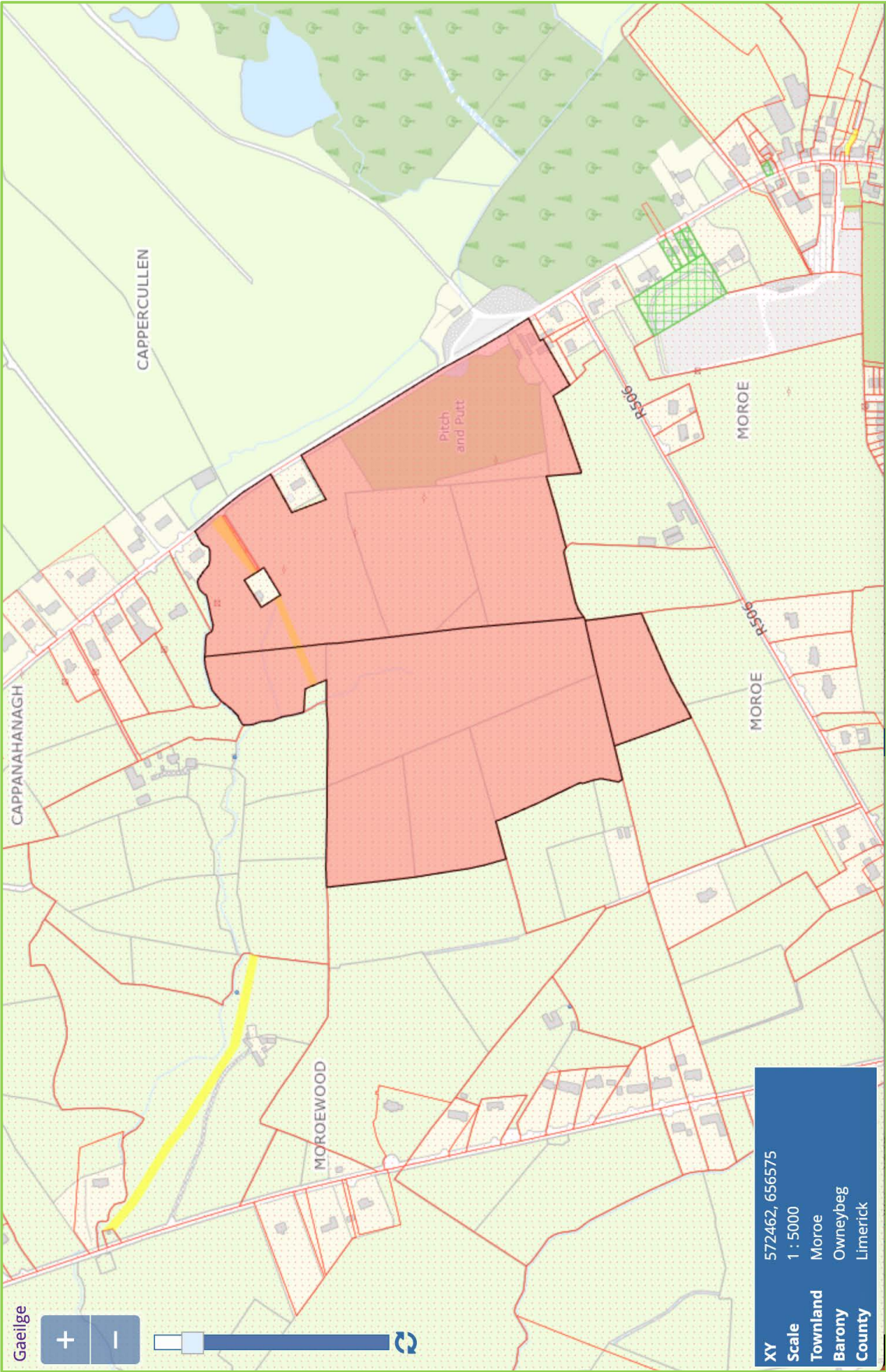
## **GLENSTAL CROSS**

Murroe, Co. Limerick.

**Prime Holding c. 49.5 acres with Future Potential**



Map:

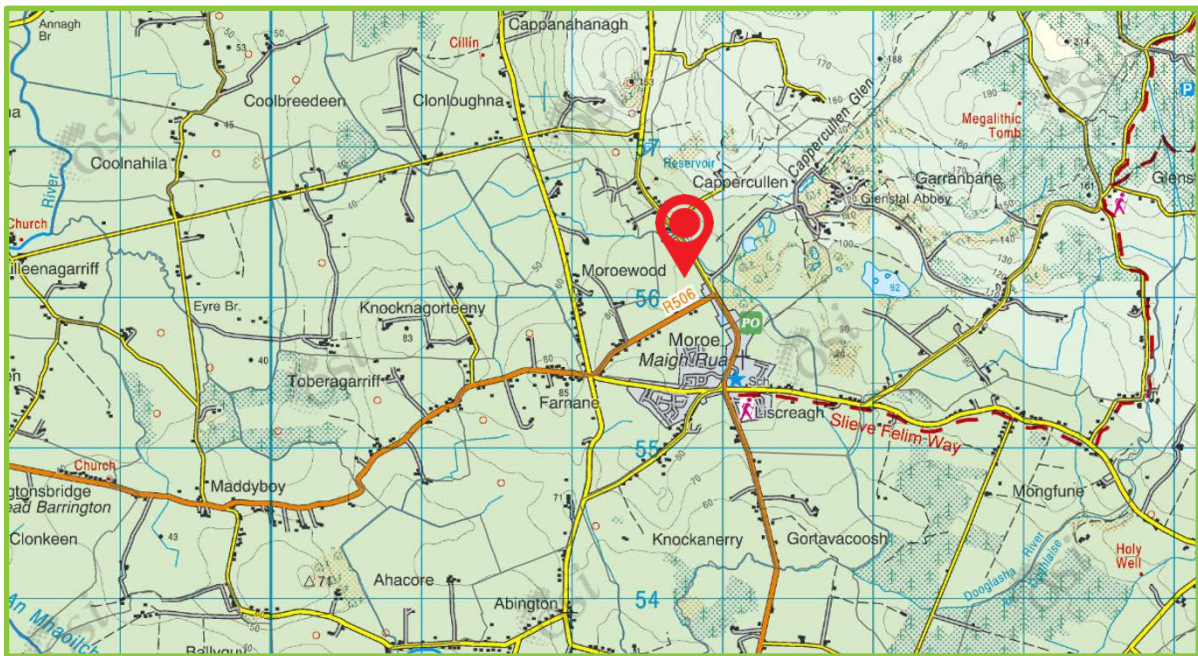


Not to Scale. For Identification Purposes Only.

Call 061 378 121

| Aerial Photo:





## | The Lands

Announcing to the market a highly desirable holding extending to Circa 49.5 st acres or thereabouts contained in folio LK14205 located on the periphery of the hugely popular and much sought after village of Murroe. This renowned property has been home to Glenside Pitch & Putt for many successful years and could still have potential to continue and maintain this marvellous facility if so required, hence we are providing the opportunity to aspiring purchasers to acquire this property in one or two lots. There is extensive road frontage which could provide site potential. Such a well-located holding must also have long term development potential and hope value making this an excellent investment opportunity. Very suitable for all types of farming use including beef, equestrian or hobby farming. Mains electricity and water connected. Ladies and gents toilet facilities. Inspection is very highly recommended.

## | Viewing

By prior appointment.

## | Directions

Enter Eircode V94 N567 in your mobile device.  
 Lot 1: Pitch & Putt lands extending to Circa 7 st acres.  
 Lot 2: Circa 42.5 st acres.  
 Lot 3: The entire Circa 49.5 st acres.  
 Joint agents GVM Auctioneers, Limerick City or  
 REA John Lee, Newport.

## | Price: P.O.A.



## | Selling agents

REA John Lee,  
 James Lee  
 Main Street,  
 Newport,  
 Co. Tipperary.  
 V94 FC8Y

T 061 378121  
 E [info@reajohnlee.ie](mailto:info@reajohnlee.ie)  
 W [www.reajohnlee.ie](http://www.reajohnlee.ie)

GVM Auctioneers,  
 Tom Crosse  
 25-26 Glentworth Street,  
 Limerick

T (61) 413 522  
 E [tomcrosse@gvm.ie](mailto:tomcrosse@gvm.ie)  
 W [www.gvm.ie](http://www.gvm.ie)

**CONDITIONS TO BE NOTED:** The terms set out herein are by way of partial summary. Intending purchasers should obtain a copy of the Conditions of Sale where the matters are dealt with comprehensively. Particulars and Conditions of sale are available from the Agents and the Solicitors with carriage of sale. REA John Lee for themselves and for the vendors whose agents they are, give notice that: 1) The particulars are set out in this Brochure and Schedule as a general outline for the guidance of intending purchasers and do not constitute part of an offer or contract. 2) All descriptions, dimensions, references to condition and necessary permissions for the use and occupation and other details are given in good faith and are believed to be correct but any intending purchasers should not rely on them as statements or representations of fact but must satisfy themselves by inspection or otherwise as to the correctness of each of them. 3) No person in the employment of REA John Lee has any authority to make representations or warranty whatsoever in relation to this property. All prices quoted are exclusive of VAT

[reajohnlee.ie](http://reajohnlee.ie) PSRA: 002764

