

Fine family home with panoramic
views and equestrian facilities

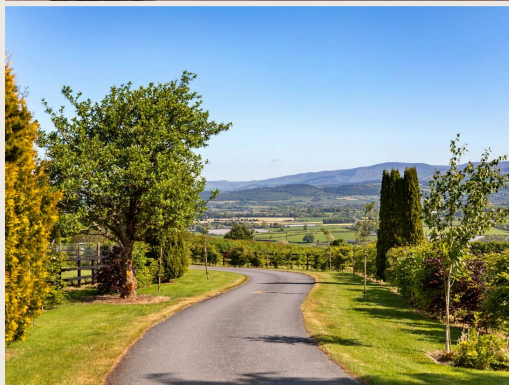
Glenbeg, Ballycullane Beg, Dungarvan, Co Waterford, X35 D732

savills



Fine family home with panoramic views and equestrian facilities

Glenbeg, Ballycullane Beg, Dungarvan, Co Waterford, X35 D732



Fine family home with panoramic views and equestrian facilities

Glenbeg, Ballycullane Beg, Dungarvan, Co Waterford, X35 D732



About this property

Glenbeg is a delightful residential holding which occupies a private and elevated situation offering stunning sea views of Dungarvan, mountains and surrounding coastline.

This fine family home offers spacious accommodation including an entrance hall, a drawing room, a large open plan kitchen/breakfast room, a sun room, utility and boot room. The kitchen offers ample cabinet storage space and is fitted with an island unit. A large bay window affords beautiful vistas out over the Waterford coast. A sunroom adjoins the kitchen and opens out onto a patio area, ideal for alfresco dining and enjoying the tranquil surroundings. The inner hall leads to a cosy den and a bedroom with an ensuite bathroom, perfect for guests or family members.

Further bedroom accommodation is located on the first floor. A large master ensuite bedroom is fitted with a walk-in wardrobe and enjoys views out over the coast and Dungarvan. Three further bedrooms, two bathrooms and a hot press complete the floor.

This well-proportioned house would be ideal for a family home for those with an interest in outdoor pursuits.

Gardens and land

The driveway is flanked by trees and scrubs and the flowerbeds

bordering the house are well planted. The surrounding land is laid out in paddocks with post and rail fencing, ideal for horses. The land slopes gently away from the house to the front and is bordered by Coillte woodland to the rear.

Outbuildings

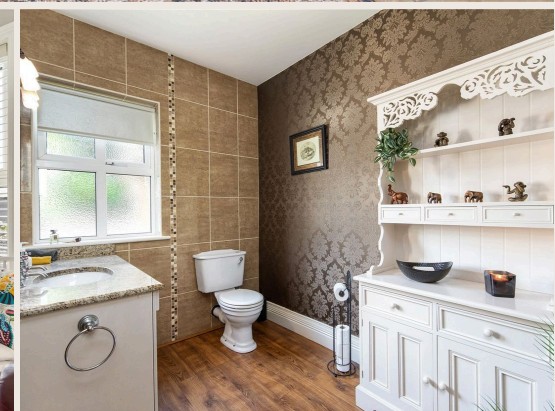
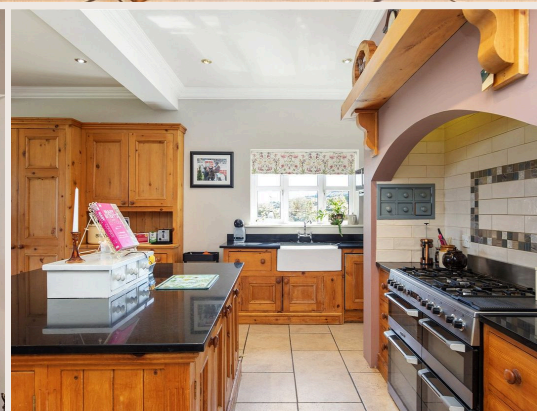
The property also benefits from first-class equestrian facilities including 10 loose boxes, a tack room, an office, adjoining WC and ample storage units. The stables are in excellent working order, well- presented and ready for a new owner to enjoy. Both sheds have concrete floors and corrugated roofs. There is also a fenced sand arena, a lunging arena and a walker. Multi-purpose storage sheds provide further space for tools and machinery, supporting a variety of outdoor activities.

Set only 3km from Dungarvan town, there are wonderful amenities close by including outstanding beaches, mountains, and the Greenway ideal for walking/cycling enthusiasts.

Fine family home with panoramic views and equestrian facilities

Glenbeg, Ballycullane Beg, Dungarvan, Co Waterford, X35 D732

savills



Fine family home with panoramic views and equestrian facilities

Glenbeg, Ballycullane Beg, Dungarvan, Co Waterford, X35 D732



Plans

 3597 sq ft

 16 acres



Fine family home with panoramic views and equestrian facilities

Glenbeg, Ballycullane Beg, Dungarvan, Co Waterford, X35 D732

savills



Local Area

County Waterford is situated in the southeast of Ireland and is synonymous for its diverse landscape, beautiful sandy coastline on the south to the Comeragh Mountains on the north. Glenbeg is located just outside Dungarvan, a vibrant coastal town in southeast Ireland, known for its strong food culture and scenic charm. The Waterford Festival of Food takes place annually and attracts visitors from across Ireland and abroad.



Fine family home with panoramic views and equestrian facilities

Glenbeg, Ballycullane Beg, Dungarvan, Co Waterford, X35 D732



Property Details

Key Features

- Fine family home
- Set on about 15 acres
- Extensive equestrian facilities
- Far reaching coastal views
- Ideally located near Waterford and Cork City

Services & Additional Information

- Extensive equestrian facilities including 10 stables, arenas, and paddocks
- Spacious 5-bedroom layout with open-plan kitchen, sunroom, and patio
- Beautiful landscaped gardens and tree-lined driveway
- High-speed broadband connectivity
- Prime location near Dungarvan, with excellent amenities, schools, and outdoor activities nearby

BER

BER Rating = BER



Fine family home with panoramic views and equestrian facilities

Glenbeg, Ballycullane Beg, Dungarvan, Co Waterford, X35 D732



Enquire



Rose Lyle
Dublin - Country
+ 353 (0) 1 618 1300
rose.lyle@savills.ie

More Information



View on website



View Digital Brochure



Property Search

Viewing strictly by appointment

Property Ref: DUY240254



Important Notice: Savills, its clients and any joint agents give notice that 1: They are not authorised to make or give any representations or warranties in relation to the property either here or elsewhere, either on their own behalf or on behalf of their client or otherwise. They assume no responsibility for any statement that may be made in these particulars. These particulars do not form part of any offer or contract and must not be relied upon as statements or representations of fact. 2: Any areas, measurements or distances are approximate. The text, photographs and plans are for guidance only and are not necessarily comprehensive. It should not be assumed that the property has all necessary planning, building regulation or other consents and Savills have not tested any services, equipment or facilities. Purchasers must satisfy themselves by inspection or otherwise. *powered by* **FluoPro**