

# For Sale

Asking Price: €195,000

**Sherry  
FitzGerald**  
O'Neill



6 Mardyke Street, Skibbereen, Co Cork.  
P81 HD27

**BER D1**

[sherryfitz.ie](http://sherryfitz.ie)



Attractive 2-bedroom terraced home situated in a pleasant location convenient to all that Skibbereen town has to offer. The property is presented and maintained in pristine condition.

The many features of the property include an open fireplace in the sitting room, double glazed windows and doors throughout and a newly fitted kitchen and shower room.

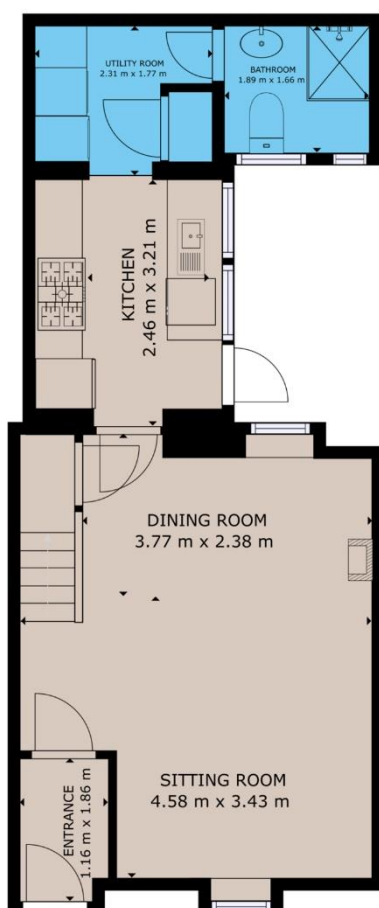
The house extends to 690 sq. ft. / 64 sq. m. approximately and comprises entrance hallway, open plan living/dining room, kitchen, utility and newly renovated shower room on the ground floor. Upstairs there are 2 spacious bedrooms.

There is access from the kitchen to a compact yard perfect for storing fuel for the open fire.

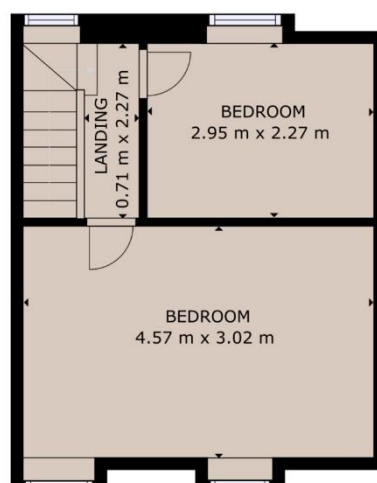
This is an excellent opportunity to acquire a superb family home / investment property in the thriving market town of Skibbereen.







GROUND FLOOR



FIRST FLOOR

GROSS INTERNAL AREA

TOTAL : 64.07 m<sup>2</sup>

Whilst every attempt has been made to ensure the accuracy of the floor plan contained here, measurements of doors, windows, rooms and any other items are approximate and no responsibility is taken for any error, omission, or misstatement. This plan is for illustrative purposes only and should be used as such by any prospective purchaser.



**Sherry  
FitzGerald**  
O'Neill

**NEGOTIATOR**

Niamh Moloney  
Sherry FitzGerald O'Neill  
37 North Street, Skibbereen,  
Co Cork  
T: 028 21404  
E: [info@sfoneill.ie](mailto:info@sfoneill.ie)

**VIEWINGS**

Strictly By Appointment Only

**ENERGY RATING**

BER: D1  
Cert No.: 118104538  
EPI: 241.89 kWh/m<sup>2</sup>/yr

[sherryfitz.ie](http://sherryfitz.ie)  
[sfoneill.ie](http://sfoneill.ie)  
[myhome.ie](http://myhome.ie)  
[daft.ie](http://daft.ie)

**CONDITIONS TO BE NOTED:** A full copy of our general brochure conditions can be viewed on our website at <http://www.sherryfitz.ie/terms>, or can be requested from your local Sherry FitzGerald office. We strongly recommend that you familiarise yourself with these general conditions. While care has been taken to ensure that information contained in Sherry FitzGerald publications is correct at the time of publication, changes in circumstances after the time of publication may impact on the accuracy of this. PSRA Registration No. 004158