

A charming one bed apartment,  
benefiting from a private patio garden

Vicarage Gate, London, W8 4HH

🛏 1 🛁 1 🛋 1

Guide Price £725,000

savills



# A charming one bed apartment, benefiting from a private patio garden

Vicarage Gate, London, W8 4HH



Guide Price £725,000



## About this property

Situated on the lower ground floor of an attractive period conversion, this one bedroom, one bathroom property is well-presented and offers excellent living & entertaining space, a private patio garden and ample storage throughout.



# A charming one bed apartment, benefiting from a private patio garden

Vicarage Gate, London, W8 4HH

1  1  1 

Guide Price £725,000

savills



A charming one bed apartment,  
benefiting from a private patio garden

Vicarage Gate, London, W8 4HH



Guide Price £725,000



## Plans

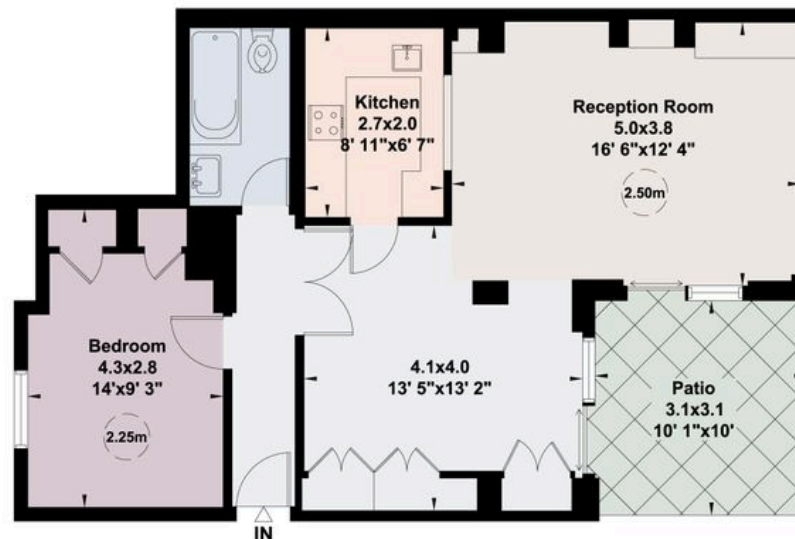
Approx. gross internal floor area

649 sq ft

### Vicarage Gate, W8

Gross internal area (approx.)  
60 Sq m (649 Sq ft)

For identification only, Not to Scale



Lower Ground Floor

For guidance only and must not be relied upon as a statement of fact.  
All measurements and areas are approximate only (and have been prepared in accordance  
with the current edition of the RICS Code of Measuring Practice).



A charming one bed apartment,  
benefiting from a private patio garden

Vicarage Gate, London, W8 4HH



Guide Price £725,000



## Key Information

### Local Authority

The Royal Borough of  
Kensington and Chelsea

### Council Tax

Band = F

### Tenure

Share of Freehold (Lease  
Expiry 3006)

### Ground Rent

Nil

### Service Charge

£4354.92 per annum

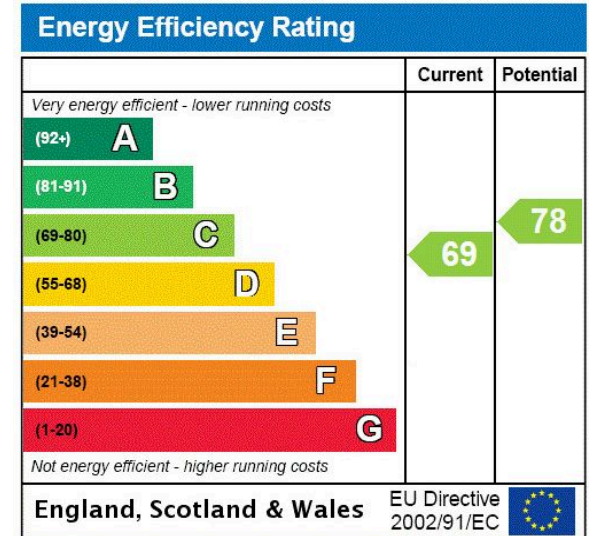
### Services

Service charge £4354.92 which  
includes £675 into reserve fund,  
buildings insurance is included in  
the service charge.

### EPC

EPC Rating = C

PROPERTY



A charming one bed apartment,  
benefiting from a private patio garden

Vicarage Gate, London, W8 4HH



Guide Price £725,000



## Enquire



**Charlie Kennard**

Kensington

+44 (0)7866 916 358

charlie.kennard@savills.com

## More Information



[View on website](#)



[View Digital Brochure](#)



[Property Search](#)

**Viewing strictly by appointment**

Published: October 2024

Property Ref: KEH240084

powered by  
**FluxPro**

Important Notice: Savills, its clients and any joint agents give notice that 1: They are not authorised to make or give any representations or warranties in relation to the property either here or elsewhere, either on their own behalf or on behalf of their client or otherwise. They assume no responsibility for any statement that may be made in these particulars. These particulars do not form part of any offer or contract and must not be relied upon as statements or representations of fact. 2: Any areas, measurements or distances are approximate. The text, photographs and plans are for guidance only and are not necessarily comprehensive. It should not be assumed that the property has all necessary planning, building regulation or other consents and Savills have not tested any services, equipment or facilities. Purchasers must satisfy themselves by inspection or otherwise.