

# THE FURROWS

Ratoath



*Love where  
you live*

**Glenveagh**  
Home of the new.







## THE FURROWS

Glenveagh is pleased to introduce The Furrows, a striking new collection of beautifully designed family homes ideally located in charming town of **Ratoath, County Meath.**

**The Furrows** embodies modern, stylish living in the **friendly** surroundings of Ratoath - a warm, welcoming and well-established area famed for its sense of community.

That's what makes it ideal for anyone looking to put down roots of their own.

*Love where  
you live*



**LOVE**  
A PLACE OF  
YOUR OWN  
**LIVE**  
CONNECTED TO  
YOUR COMMUNITY







THE FURROWS

EVERYWHERE  
IS ACCESSIBLE  
WHEN YOU'RE IN  
THE CENTRE OF THINGS

The **Furrows** connects you to it all, conveniently located just a short drive from Navan, Drogheda and Dublin with the M2 and M3 Motorways just minutes away. For those who choose public transport, regular buses serve Dublin City Centre and beyond, so you can enjoy stress-free daily commutes.



|                                |            |
|--------------------------------|------------|
| Ratoath Allotments             | 5 minutes  |
| Ashbourne Retail Park          | 7 minutes  |
| Blanchardstown Shopping Centre | 18 minutes |
| Hill of Tara                   | 20 minutes |
| Dublin Airport                 | 24 minutes |
| Dublin City Centre             | 30 minutes |



Nearby Bus Routes

|   |      |
|---|------|
| Ratoath → Dublin via Ashbourne          | 103  |
| Drogheda → Blanchardstown via Ashbourne | 105  |
| Kells → Dublin airport via Navan        | 109A |
| Ratoath → Dublin via Ashbourne          | 194  |



Nearby Train Routes

|                          |              |
|--------------------------|--------------|
| M3 Parkway Train Station | 13 min drive |
|--------------------------|--------------|





THE FURROWS

BER A2 A3

# LOVE SPACE TO UNWIND LIVE TO SHAPE THAT SPACE

The interior of every home in **The Furrows** is designed with you in mind. Whatever you want — space for the kids to play, a place to work from or more room to entertain friends, each home offers all the flexibility you need.

**The comfort you want, how you want it.**

Space and light help you to bring the plans for your home to life. Our designers factor real furniture sizes into each home’s layout to make furnishing your home to your taste a far easier process.



## A-Rated Specs and Standards

If it isn't A-rated, then it isn't a Glenveagh home. Each property of ours performs at the highest possible level on the BER efficiency scale — exhibiting the highest standards of insulation and airtightness.





THE FURROWS

# LOVE THE FUTURE OF COMFORT LIVE WITH EFFICIENT TECHNOLOGIES

The efficiency of a home isn't something that's just felt in your back pocket, but through the comfort and warmth you experience every day. All Glenveagh homes are built using modern construction techniques and technology that benefits you, the owner.

Our homes are built to be energy efficient with a minimum A-rating on the BER scale with the highest standards of insulation and airtightness in all our properties.



## What do homes of the future look like?

We're building the homes of tomorrow, today. We incorporate sustainable and renewable technology to reduce the carbon footprint of your home, not only in how it's built, but in how you experience it from the day you move in.

## Why is an airtight home a better choice?

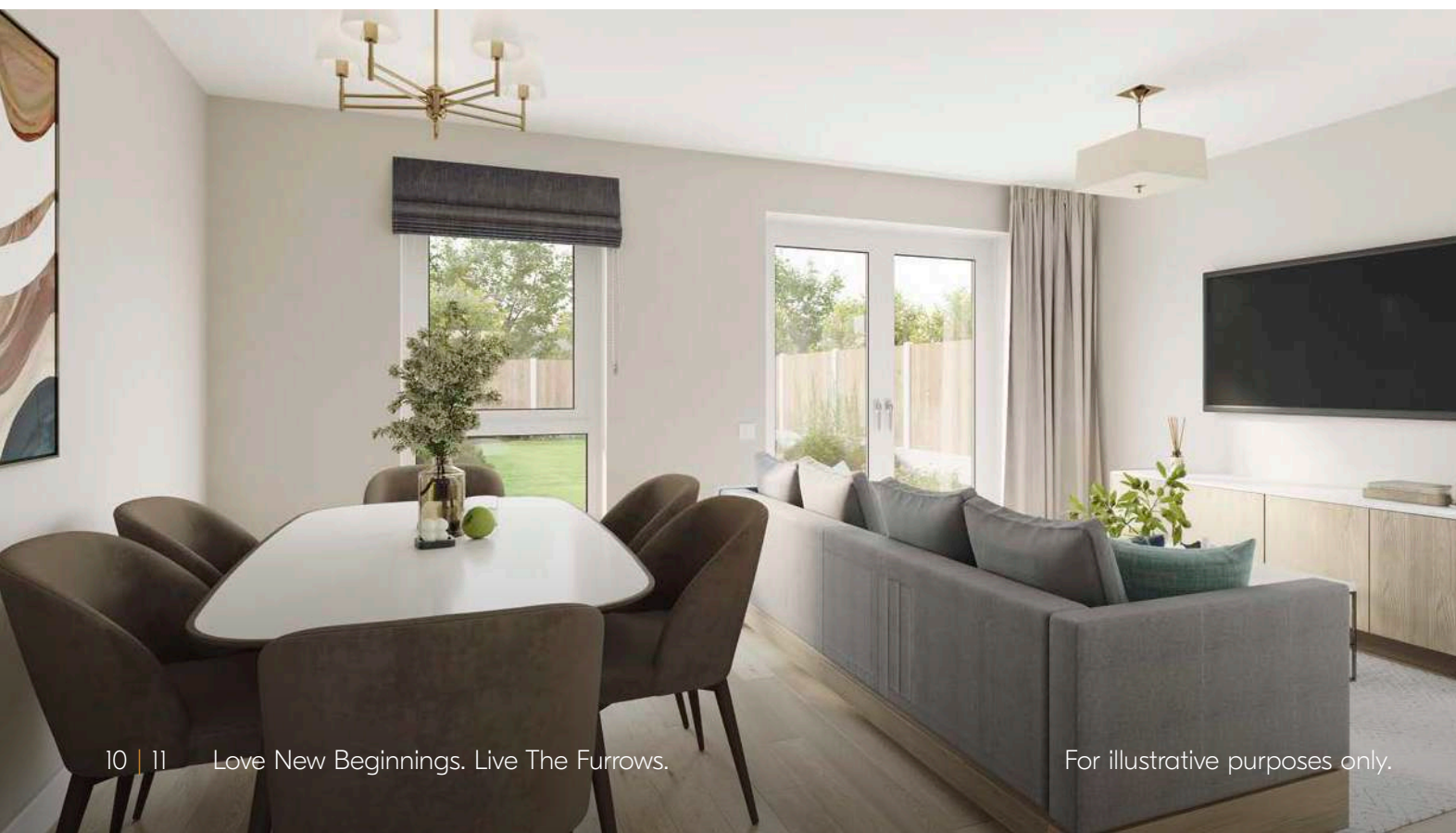
Efficiency and sustainability aren't simply about generating heat or the energy you use in your home but about retaining it and keeping it in. Your home is completely wrapped using the very latest underfloor, wall and attic insulation technology, making it airtight so there's no air leakage. Glenveagh homes use sophisticated ventilation systems to remove condensation and contaminants to ensure a better quality of air throughout.

## Experience the Future of Home Comfort

Step into a smarter, cleaner, and more efficient way to live with our fully electric home heating system. Powered by solar energy and supported by advanced battery storage, this system delivers consistent comfort, lower energy bills, and true energy independence. Designed for sustainability and performance, it includes ceiling-mounted radiant/infrared heat panels in ground-floor living areas, an electric hot water system, PV solar panels, and a 5kWh battery with inverter, all working together to create a greener, more comfortable home.

## Pre-wiring for electric vehicles

Even if your current car isn't an electric or hybrid model, you may decide to switch in the future. That's why provisions for the installation of an electric vehicle charge point are made where applicable, so your home is ready when you make the move to electric driving.





# ROUTES TO PURCHASE

New Glenveagh homes are more affordable and achievable with the financial supports available to first-time buyers.

## HELP-to-BUY Scheme

The Help-to-Buy Scheme is designed to help first-time buyers overcome the hurdle of getting your deposit together.

The Help-to-Buy Scheme is a tax rebate scheme for first-time homebuyers, provided by the Irish Government. With it, you can get 10% of the purchase price or up to a maximum of €30,000 towards your deposit for a new-build house or apartment. Help-to-Buy cannot be used to purchase previously owned or second-hand homes. See how the Help-to-Buy Scheme can make your new Glenveagh home more achievable, visit [glenveagh.ie](http://glenveagh.ie) or [revenue.ie](http://revenue.ie)



## FIRST HOME SCHEME

Glenveagh supports the First Home Scheme, which is funded by the Government of Ireland in partnership with participating lenders.



If you qualify and avail of the First Home Scheme, the State and participating lenders will provide up to 30% of the market value of your new home, in return for the same percentage share in equity of the property. It allows eligible first-time buyers, bridge the gap between the deposit, mortgage and the purchase price of a newly built home. The amount of funding that you qualify for depends on where the new home is located and whether it's a house or an apartment. For more information about the First Home Scheme visit [glenveagh.ie](http://glenveagh.ie) or [firsthomescheme.ie](http://firsthomescheme.ie)

## HERE'S HOW THE SCHEMES COULD WORK FOR YOU

With a combined salary of €75,250 you could get a new Glenveagh home worth €430,000.



|                             |   |
|-----------------------------|---|
| Property price              | €430,000  |
| Household income            | €75,250   |
| Mortgage approval           | €301,000  |
| Deposit                     | €13,000   |
| Help-to-Buy                 | €30,000   |
| First Home Scheme           | €86,000<br>(=20% equity share)                          |
| Mortgage Monthly Repayments | €1,333<br>(based on 35 years and at 3.5% interest rate) |

Unlike a mortgage or personal loan, there is no charge for the equity share in your home with the First Home Scheme for the first 5 years. From year 6, if the equity share is still in place, a service charge will apply. See [firsthomescheme.ie](http://firsthomescheme.ie) for more.





THE FURROWS

# LOVE ADVENTURE AT EVERY TURN LIVE TO MAKE LASTING MEMORIES

Ratoath offers a wealth of family-friendly activities close by.

There's plenty to explore in the area and its surroundings. **The Ratoath Allotments** is a communal garden just a short spin from your new home at **The Furrows**. It's a place where people come together to make something truly special, fostering connection both to nature and the community itself. **Balrath Woods** is also a breeze to get to, offering scenic strolls and the perfect spot for weekend family picnics — weather permitting!





## THE FURROWS

# ALL INTERESTS, ALL COVERED, ALL NEARBY.

Conveniently located in **Ratoath**, **The Furrows** offers easy access to an extensive range of amenities, from shopping and dining out to sports and social activities for all ages.

You'll find a wonderful selection of local coffee shops, restaurants and bars to enjoy, including **WTF Burger**, **The Wildflower Cafe** and **La Bucca**. The Furrows is also within easy driving distance from **Ashbourne** so you can enjoy the charm of small town living with a fuller range of nearby shopping and leisure choices.

From family days out at nearby wonders like **Emerald Park** and **The Hill of Tara**, to regular comedy, music and theatre events at **The Ratoath Community Centre**, there's always something new to discover.





# LOVE STRONG COMMUNITIES LIVE TO MAKE A DIFFERENCE

## **We aim to enrich the lives of those who live in our communities.**

We take pride in our place in local communities. That's why we're determined to play an active, meaningful role in the areas wherever we build, through substantial local investment and support for the people who live there.

## **Our approach is about building sustainably for every community for the future.**

We support countless initiatives throughout every community we build - from sponsorships of local sports clubs and providing recreational areas, green spaces, playgrounds, and cycle tracks for residents, to charitable supports such as the local Tidy Towns group that makes a difference in our wider communities.







## WE'RE HERE **TO HELP** YOU SETTLE IN

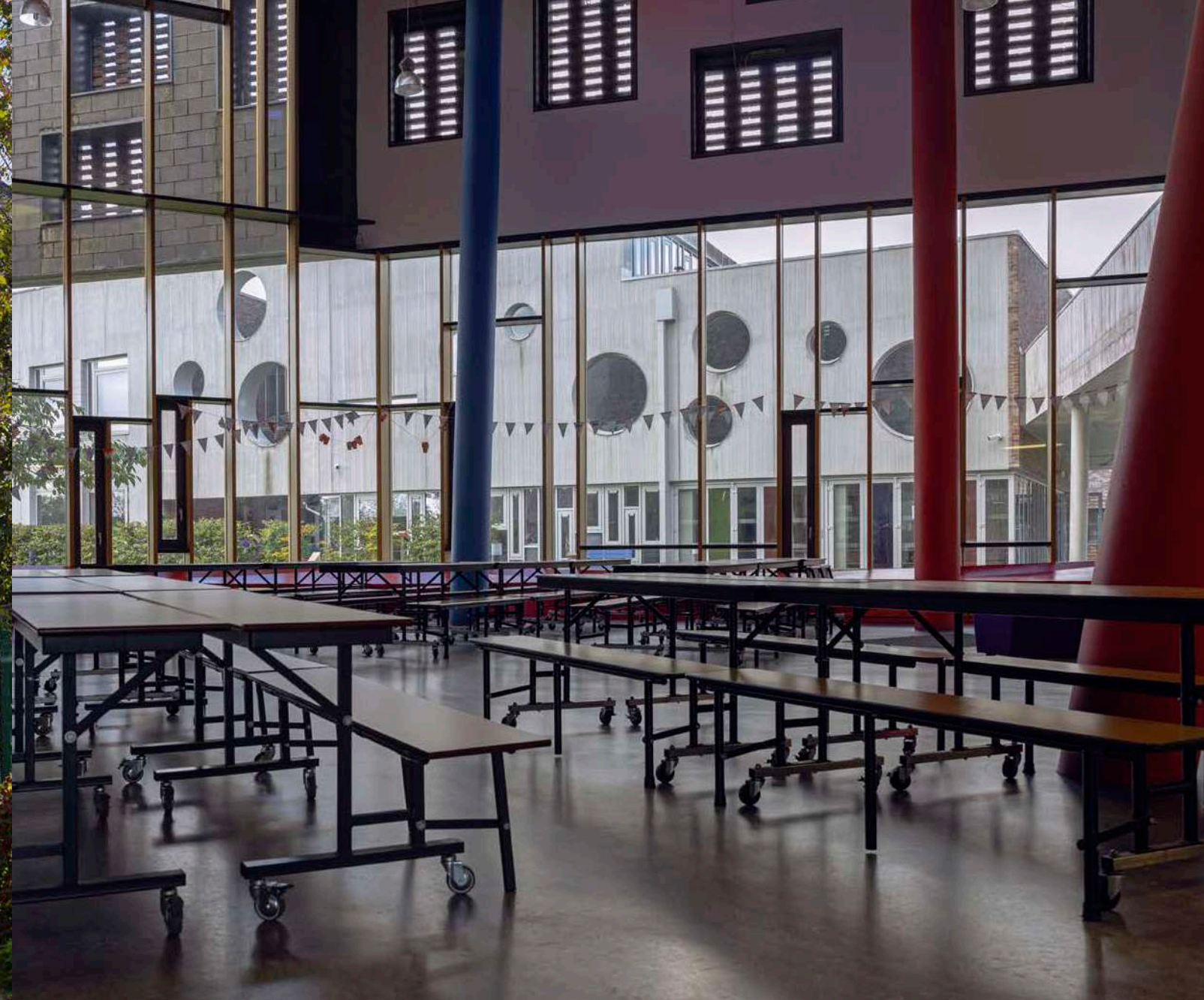
We want you to feel at home from the moment you move in — and for a long time after that! That's why we place such importance on those early few months after you get the keys to your home.

We also provide our own dedicated Customer Care team for new homeowners. They're always on hand and available to help with any issues within your home or with any general queries, ensuring that you have a pleasant and positive experience from day one.

Of course, each of our homes also comes with an extensive range of warranties and guarantees that cover virtually every aspect of your new home.

Our GreenCare Teams maintain the landscaping around each Glenveagh development and are responsible for planting, pruning, cutting and cultivating the green spaces around your home. We believe that biodiversity in our communities isn't simply about adding colour, it's about bringing living, breathing, natural sustainability to our doorstep.





# A COMMUNITY READY FOR SCHOOL WORK AND PLAY TIME

Ratoath and the surrounding area offers plenty by way of education, with schools available for children of all ages.

There's a wide range of school types nearby, including Gaelscoileanna and Educate Together options, alongside numerous other secondary, primary and Montessori choices in the locality.

Here's a look at where your children could get the best in education:

- St. Paul's Junior National School
- Ratoath College
- Ratoath Junior National School
- Ratoath Senior National Catholic School
- Gaelscoil na Ríthe
- Ashbourne Educate Together National School

For Third Level education, commuter connections to all the Dublin choices are right on your doorstep.

As you'd expect, there are many ways to enjoy the sporting and outdoor side of life in **Ratoath**. In fact, you're spoiled for choice with everything from athletics, football and GAA clubs to pitch and putt courses, BMX tracks and Taekwondo studios nearby.



# REST EASY, YOU'RE HOME.

Bedrooms and bathrooms in The Furrows are generously sized with a high-level finish to give that luxury feel to your home.



For illustrative purposes only.

## THE FURROWS

# BUILT TO A STANDARD YOU CAN TRUST

Home specifications may vary depending on house type.

### External Features

- Maintenance-free exteriors.
- Tasteful mix of brick and / or render.
- PVC fascia, gutters and downpipes.
- Composite front doors with secure locking system.

### Gardens

- Seeded gardens.

### Internal Finishes

- Walls and ceilings painted in Fleetwood Glenveagh Mist Vinyl Matt throughout.
- Quality interior joinery to include painted doors and contemporary skirting and architraves finished in an off-white satin paint.

### Electrical & Heating

- Generous lighting, power points and switches.
- Smoke and heat detectors fitted as standard.
- TV connection in living, kitchen and master bedroom dependent on house type.
- Powered by solar energy and battery storage, featuring radiant heat panels, electric hot water system, PV solar panels, and a 5kWh battery for lower bills, energy independence, and year-round comfort.
- Provisions for the installation of a car charging point where applicable.

### Kitchen

- Superb modern kitchen with soft close doors.
- Ergonomic kitchen design.
- All kitchens are fitted with durable hard-wearing worktops, full hob backsplash & matching upstand.

### Bathroom & Ensuite

- Stylish contemporary bathroom, ensuite and guest WC with elegant sanitary ware.
- Beautiful taps, shower heads & bath fittings.

### Windows & Doors

- Double glazed windows.
- French two-tone double doors to back garden where applicable.

### Wardrobes

- Modern fitted wardrobes in the master bedroom.

### Energy Efficiency

- All homes are A-rated and incorporate sustainable and renewable technology resulting in lower energy costs.
- High level of insulation incorporated in floors, walls and roofs.
- All houses are constructed to provide a high level of airtightness to retain heat.

### Guarantee

- Each home at **The Furrows** home is covered by a 10-year structural guarantee.



## Schools

- 1 St. Paul's Junior National School
- 2 Ratoath College
- 3 Ratoath Junior National School
- 4 Ratoath Senior National Catholic School
- 5 Gaelscoil na Rithe
- 6 Ashbourne Educate Together National School

## Shopping

- 1 Sweeney's Centra
- 2 Hannon's SuperValu
- 3 Tesco Express
- 4 Maxol Ratoath

## Sport

- 1 AllBody Pilates
- 2 Ratoath Tennis Club
- 3 Ratoath Athletic Club
- 4 Ratoath Taekwondo
- 5 Ratoath Harps AFC
- 6 Ratoath Pitch & Putt
- 7 Ratoath BMX
- 8 Ratoath GAA
- 9 Ratoath RFC
- 10 Ashbourne Golf Club

## Health

- 1 Ratoath Medical Centre
- 2 Meadowbank Medical Centre

## Parks

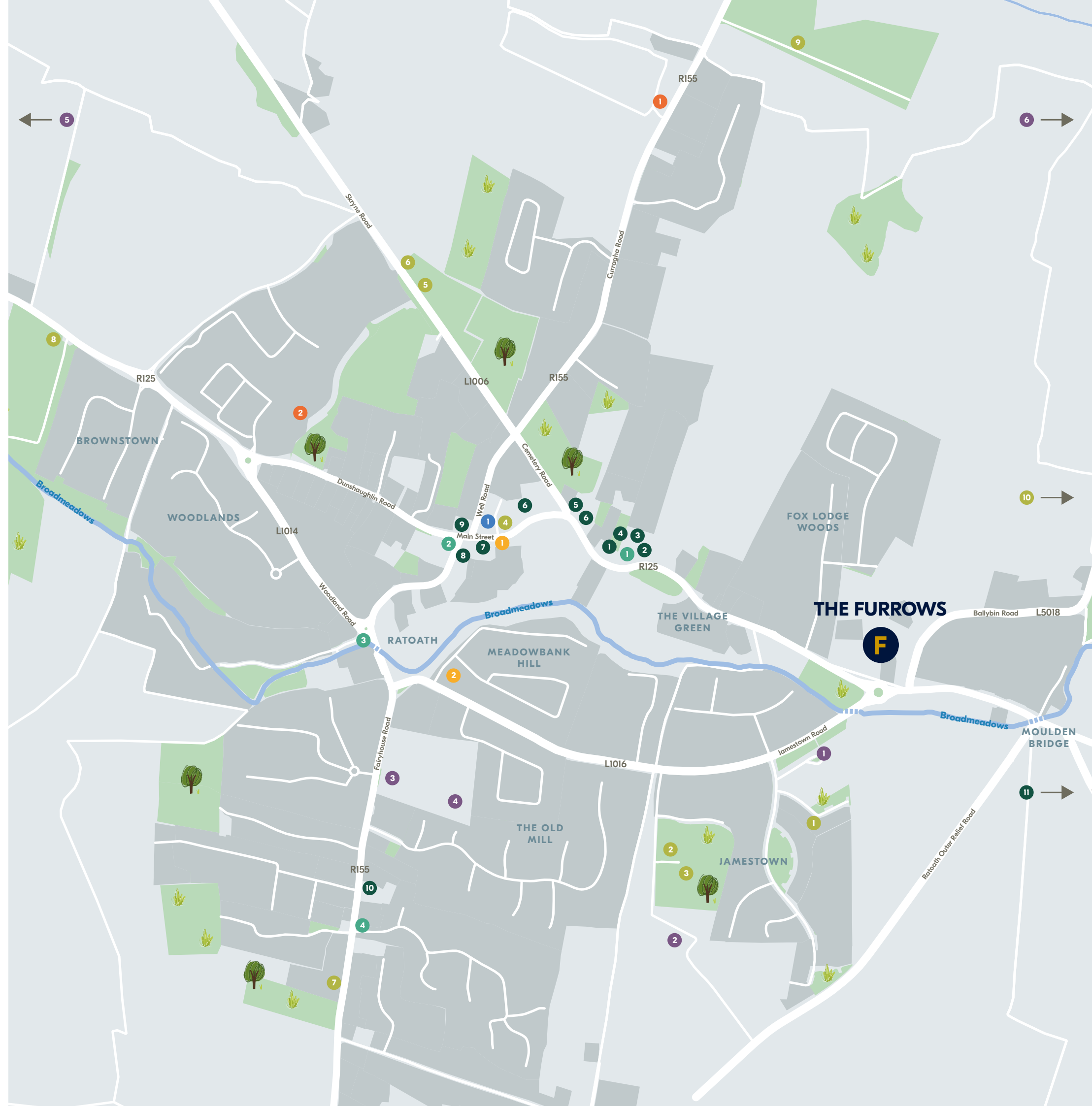
- 1 Ratoath Allotments
- 2 Ratoath Playground

## Attractions

- 1 Ratoath Community Centre & Venue Theatre

## Cafés/Restaurants

- 1 La Bucca
- 2 Wau Fusion
- 3 Cafe Novello
- 4 Sweeney's Bakehouse
- 5 The Auld Stand
- 6 WTF Burgers
- 7 Mario's Woodfired Pizza & Traditional Fish and Chips
- 8 O4 Ratoath
- 9 The Ratoath Inn
- 10 Macari's Chipper & Pizza
- 11 Four Star Pizza
- 12 Wildflower Cafe





# HOUSE STYLES

## Maisonettes & Duplexes

- The Cherry**  
1 Bed Maisonette  
56 - 68 sqm | 603 - 732 sqft
- The Ivy**  
1 Bed Duplex Apartment |  
Ground Floor  
55 sqm | 591 sqft
- The Laurel**  
3 Bed Duplex | First Floor & Second Floor  
118 sqm | 1,268 sqft

## 1 Bed Homes

- The Honeysuckle**  
1 Bed Bungalow | Mid Terrace  
54 sqm | 579 sqft

## 2 Bed Homes

- The Juniper**  
2 Bed Bungalow | Mid & End Terrace  
67 sqm | 721 sqft
- The Hazel**  
2 Bed Mid Terrace  
74 sqm | 792 sqft

## 3 Bed Homes

- The Poplar**  
3 Bed End Terrace  
92 sqm | 989 sqft
- The Larch**  
3 Bed Semi Detached  
101 sqm | 1,082 sqft
- The Rowan**  
3 Bed End Terrace | Side Entry  
102 sqm | 1,103 sqft

## 4 Bed Homes

- The Alder**  
4 Bed Semi Detached  
152 sqm | 1,637 sqft
- The Fir**  
4 Bed Semi Detached |  
Side Entry  
154 sqm | 1,654 sqft

# THE FURROWS



EV - Electric Vehicles  
P - Private  
CR - Creche  
V - Visitor

Plans and dimensions are indicative only and subject to change. Glenveagh Homes Ltd may alter the layout, building style, landscape and spec without notice. The finished home may therefore vary from the information provided.

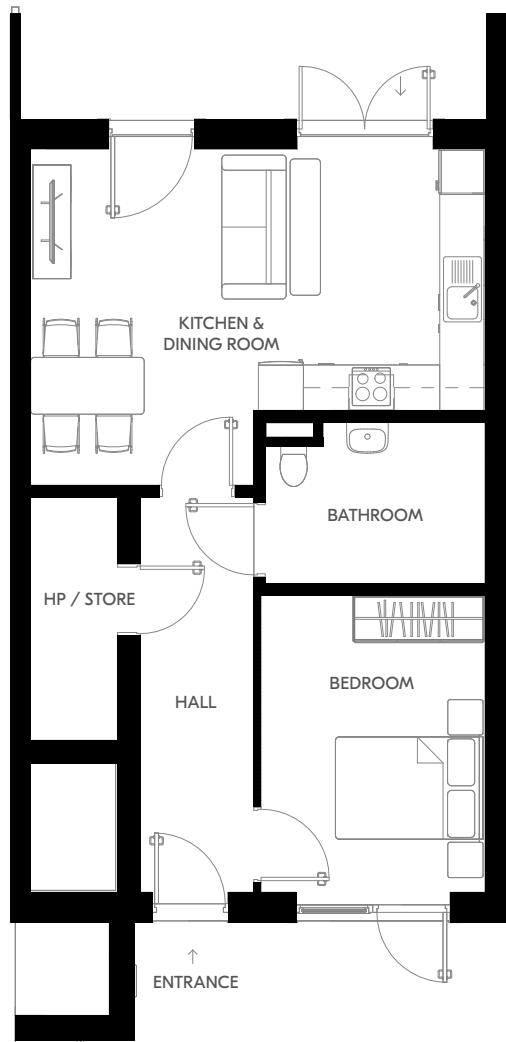
Love where  
you live

For Illustrative Purposes



# THE IVY

1 Bed Duplex Apartment | Ground Floor  
55 sqm | 591 sqft



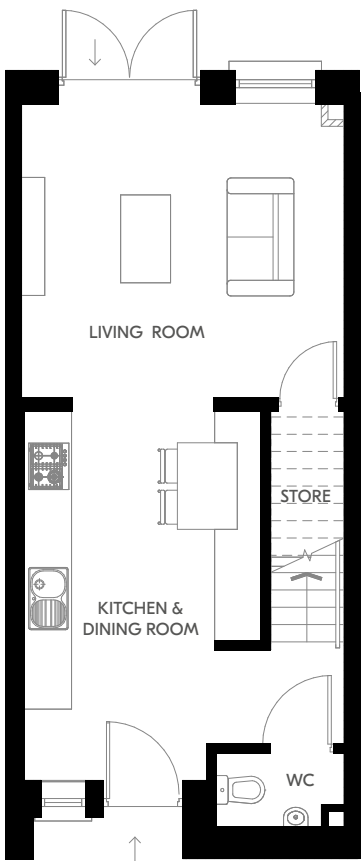
Ground Floor

Plans and dimensions are indicative only and subject to change. Glenveagh Homes Ltd may alter the layout, building style, landscape and spec without notice. The finished home may therefore vary from the information provided.

For illustrative purposes.

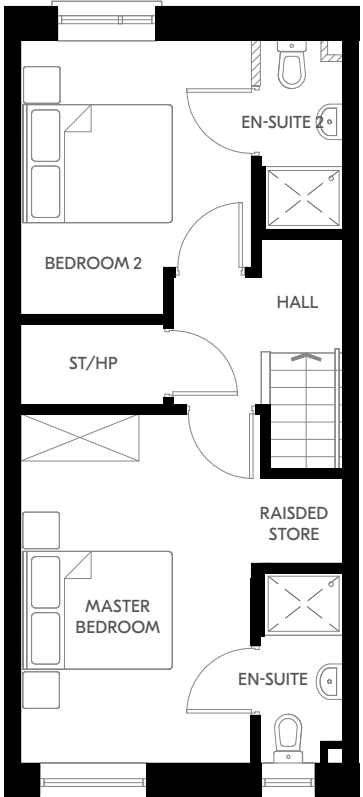
# THE HAZEL

2 Bed Mid Terrace  
74 sqm | 792 sqft



Ground Floor

Plans and dimensions are indicative only and subject to change. Glenveagh Homes Ltd may alter the layout, building style, landscape and spec without notice. The finished home may therefore vary from the information provided.



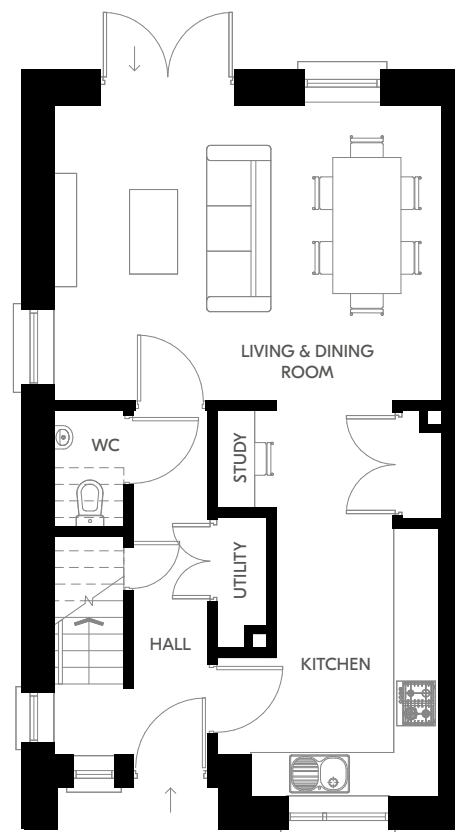
First Floor

For illustrative purposes.

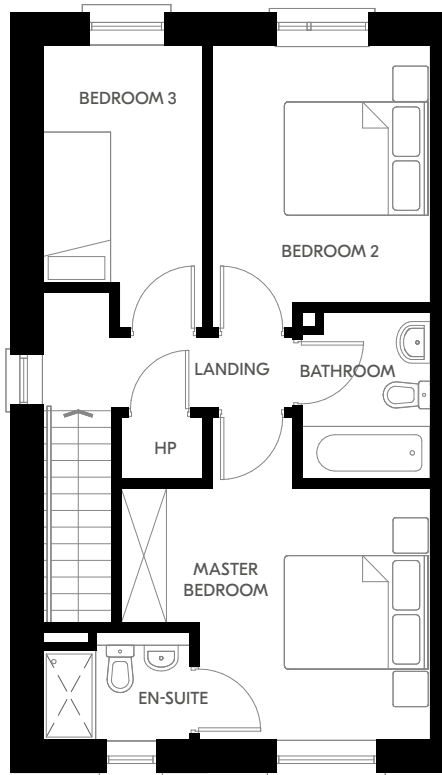


# THE POPLAR

3 Bed End Terrace  
92 sqm | 989 sqft



Ground Floor



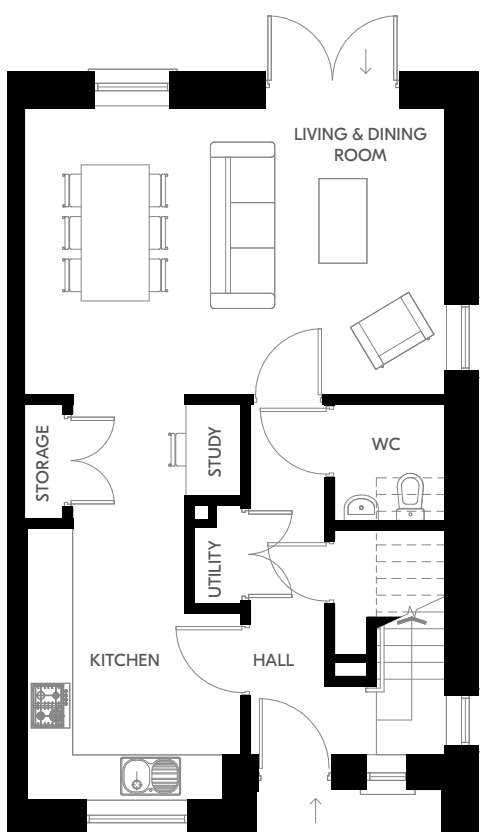
First Floor

Plans and dimensions are indicative only and subject to change. Glenveagh Homes Ltd may alter the layout, building style, landscape and spec without notice. The finished home may therefore vary from the information provided.

For illustrative purposes.

# THE LARCH

3 Bed Semi Detached  
101 sqm | 1,082 sqft



Ground Floor



First Floor

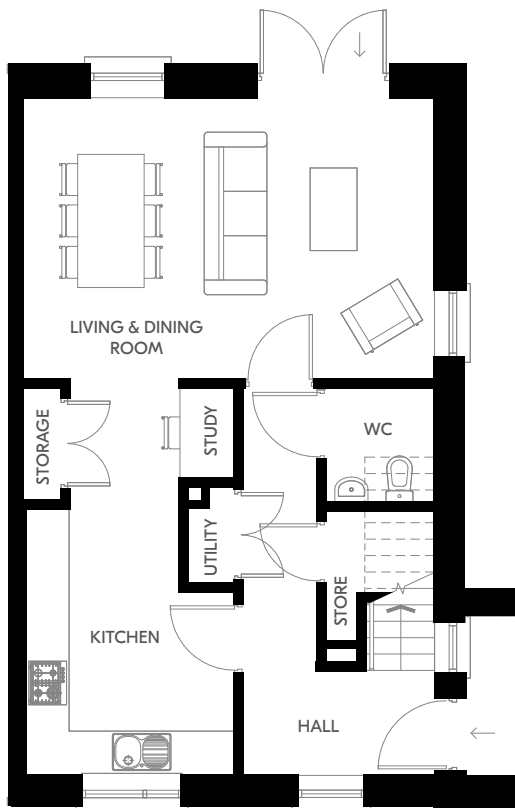
Plans and dimensions are indicative only and subject to change. Glenveagh Homes Ltd may alter the layout, building style, landscape and spec without notice. The finished home may therefore vary from the information provided.

For illustrative purposes.

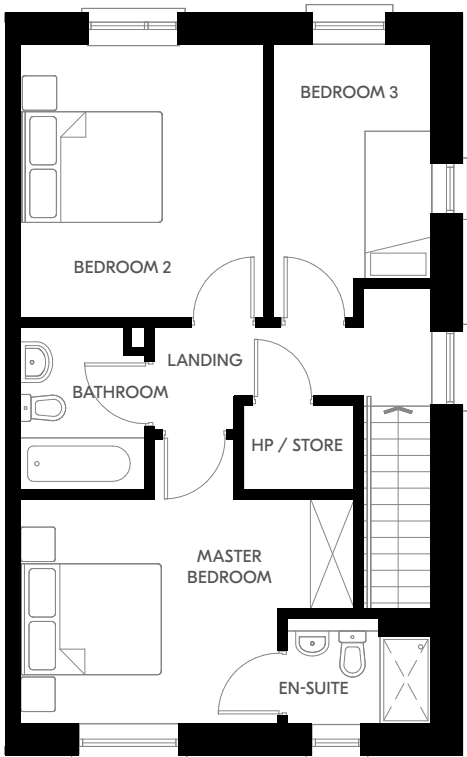


# THE ROWAN

3 Bed End Terrace | Side Entry  
102 sqm | 1,103 sqft



Ground Floor

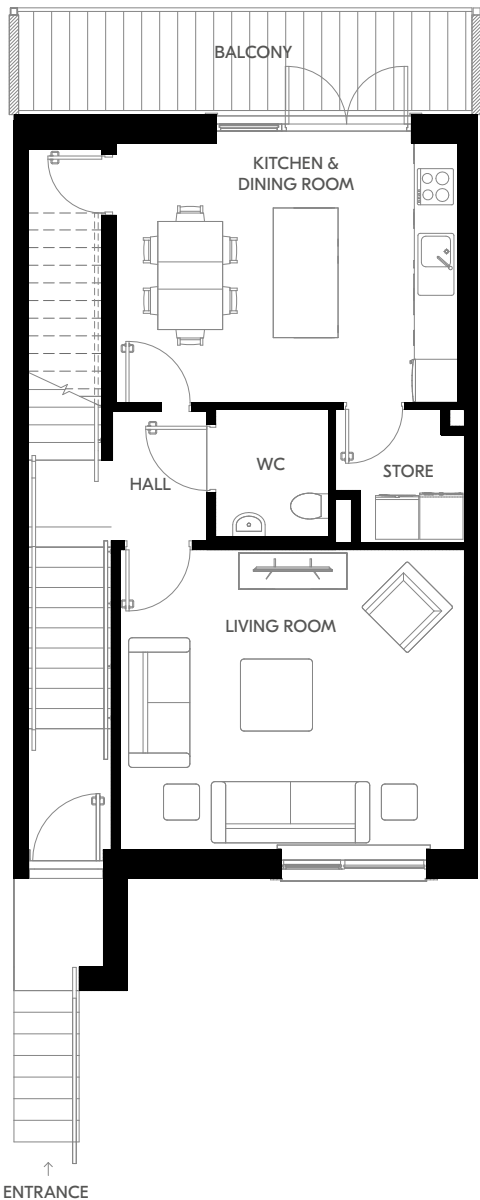


First Floor

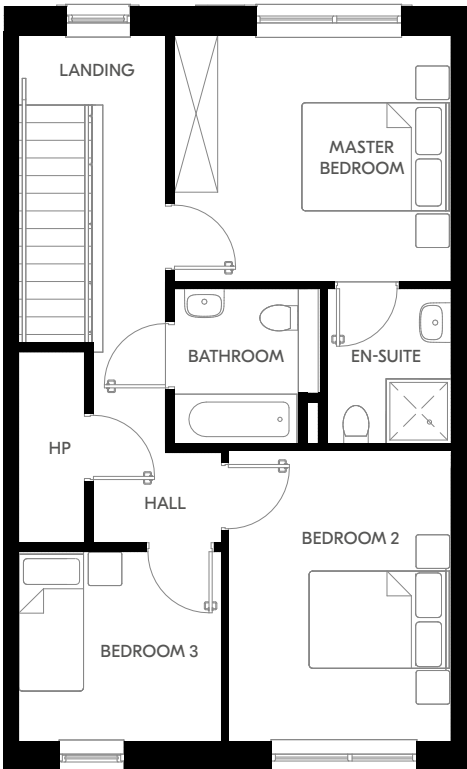
Plans and dimensions are indicative only and subject to change. Glenveagh Homes Ltd may alter the layout, building style, landscape and spec without notice. The finished home may therefore vary from the information provided.

# THE LAUREL

3 Bed Duplex | First Floor & Second Floor  
118 sqm | 1,268 sqft



Ground Floor



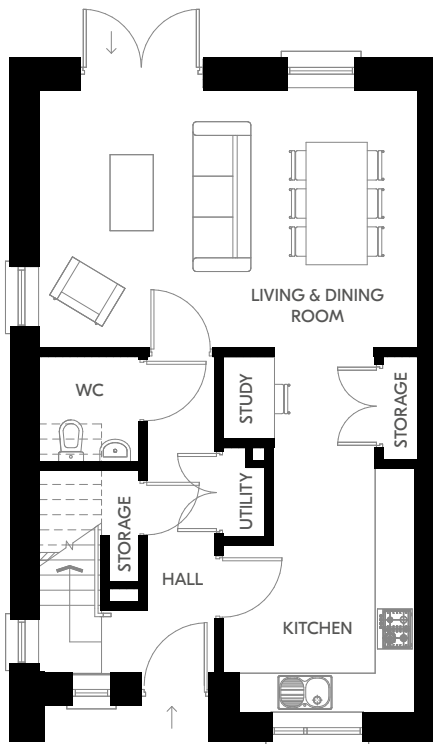
First Floor

For illustrative purposes.

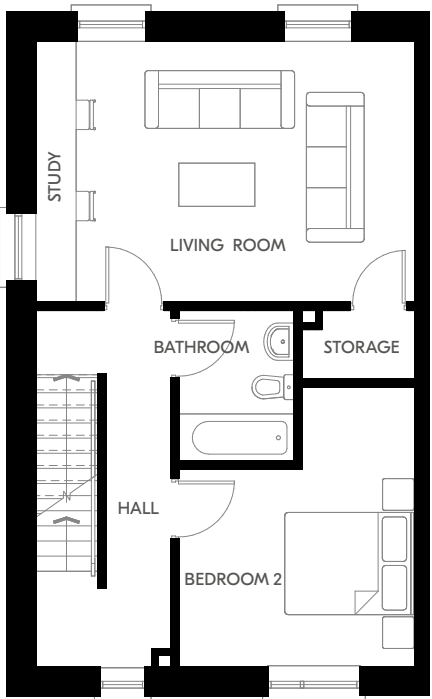


# THE ALDER

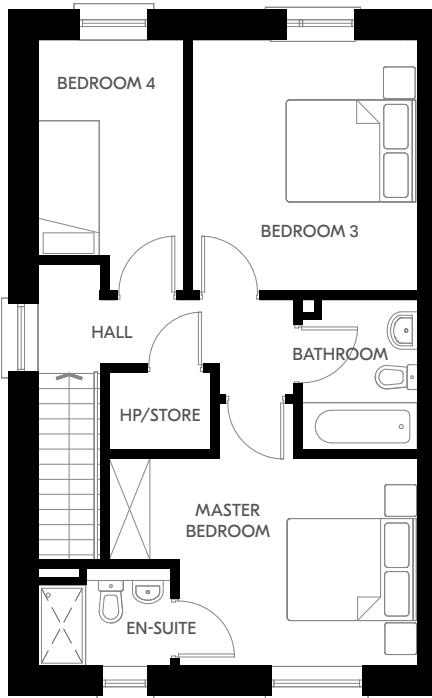
4 Bed Semi Detached  
152 sqm | 1,637 sqft



Ground Floor



First Floor



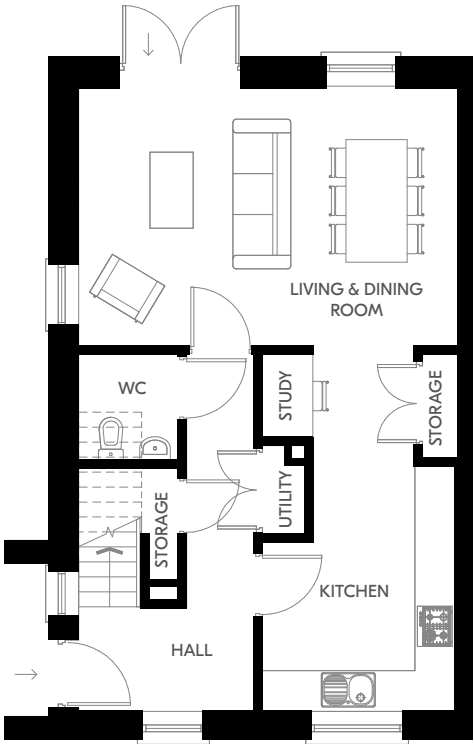
Second Floor

Plans and dimensions are indicative only and subject to change. Glenveagh Homes Ltd may alter the layout, building style, landscape and spec without notice. The finished home may therefore vary from the information provided.

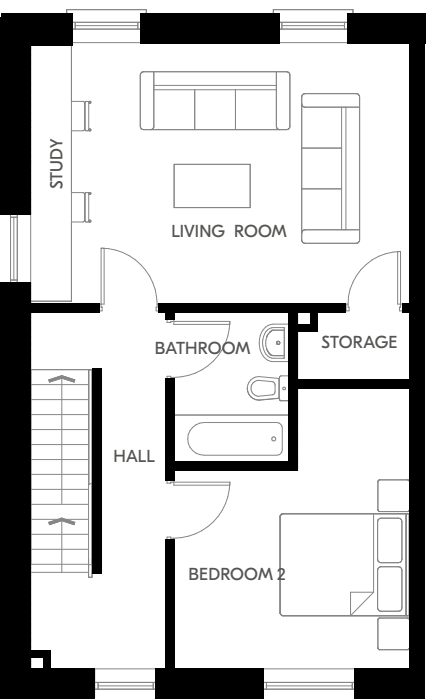
For illustrative purposes.

# THE FIR

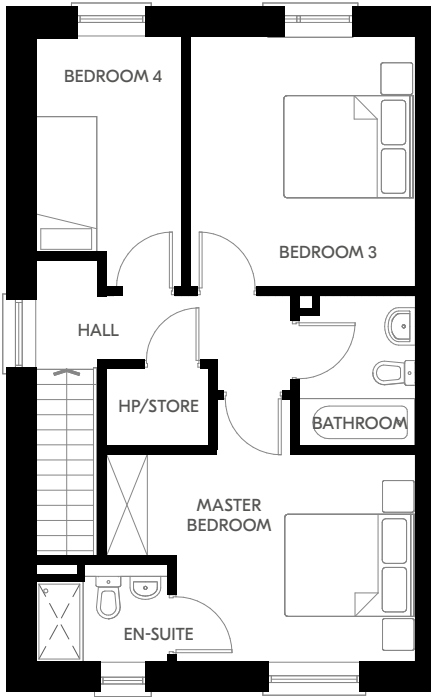
4 Bed Semi Detached | Side Entry  
154 sqm | 1,654 sqft



Ground Floor



First Floor



Second Floor

Plans and dimensions are indicative only and subject to change. Glenveagh Homes Ltd may alter the layout, building style, landscape and spec without notice. The finished home may therefore vary from the information provided.

For illustrative purposes.



*Love where  
you live*





# LOVE COMMUNITIES THAT GROW TOGETHER LIVE GLENVEAGH

Buying a home is one of life's biggest decisions. Glenveagh strives to make your home-buying journey as simple & stress-free as possible. We build high-quality homes in flourishing communities across Ireland. We don't just build homes, we build lasting communities.

If you'd like to discover your new home in a Glenveagh development, visit [glenveagh.ie](https://glenveagh.ie)

DISCOVER OUR FULL RANGE OF COMMUNITIES AT [GLENVEAGH.IE](https://glenveagh.ie)



**Balmoston**  
Donabate, Dublin



**Belcamp**  
Balgriffin



**Blackrock Villas**  
Blackrock, Co. Cork



**Folkstown Park**  
Balbriggan, Dublin



**Maple Woods**  
Midleton, Co. Cork



**Miller's Glen**  
Swords





*Love where  
you live*





Selling agent:



**046 902 7666**  
PSRA Licence: 002488

Developer: **Glenveagh Homes**  
Architect: **Doran Cray**  
Solicitor: **RDI**

The information in this document including any plans, descriptions, images, specifications or dimensions in it or separately provided or communicated to prospective buyers is indicative and intended to act as a guide only. Any such information, plans, descriptions, images, specifications or dimensions (including any information or details which may be given verbally) should not be relied upon as the basis for any offer or contract and do not constitute any statement of fact or any representation or warranty. Any plans given are not to scale. Any measurements/areas are estimates only and may vary. Prospective buyers are responsible for making their own enquiries and satisfying themselves, by inspection or otherwise as to the correctness of each of the statements in this document. Glenveagh Homes Ltd may make changes to design, features, finishes and specifications. The finished home may therefore vary from the information provided. Information about transport and local amenities is provided as a guide only and may be subject to change. Please refer to your contract pack (if applicable) for further information on anything not covered by this document. Glenveagh Homes Ltd does not authorise the Agent(s) or its staff to make or give any representation or warranty in respect of this development. All statements contained in this document are made without responsibility on the part of Glenveagh Homes Ltd.







Discover our  
full range of  
communities at:

**[glenveagh.ie](https://glenveagh.ie)**

