



Authorised Repairer

YOGA
PILATES
MASSAGE

pure
health

pure
health

pure
health

NATIONWIDE
TILES AND
BATHROOMS
MASSIVE SALE NOW
SHOWROOMS NOW OPEN

KRAV MAGA D15

NATIONWIDE
TILES AND
BATHROOMS

TO LET

High Profile Retail Showrooms C. 467 Sq. m./ 5,025 Sq. ft.

Unit 6 Coolmine Central,

Coolmine Industrial Estate | Dublin 15 | D15 A436



(01) 490 3201



www.jpmdoyle.ie



LOCATION

This property is situated in the Coolmine Central development in Coolmine Industrial Estate. Coolmine Industrial Estate is a hybrid business park comprising a variety of indigenous inhabitants, strategically located at the junction of the Blanchardstown Road and the Clonsilla Road. The subject property enjoys prominent position fronting the R121 Clonsilla road and just off Porters Road, the main estates thoroughfare. The estate is located c.12 km North West from Dublin City Centre and c. 3 km from M50/N3 interchange enabling access around the city and to all primary arterial routes serving the country. Blanchardstown Shopping Centre and Westend Retail Park are located in close proximity, providing occupiers access to a large consumer base. Notable occupiers in the estate include, Flyfit, An Post, Des Kelly Interiors and Power City.



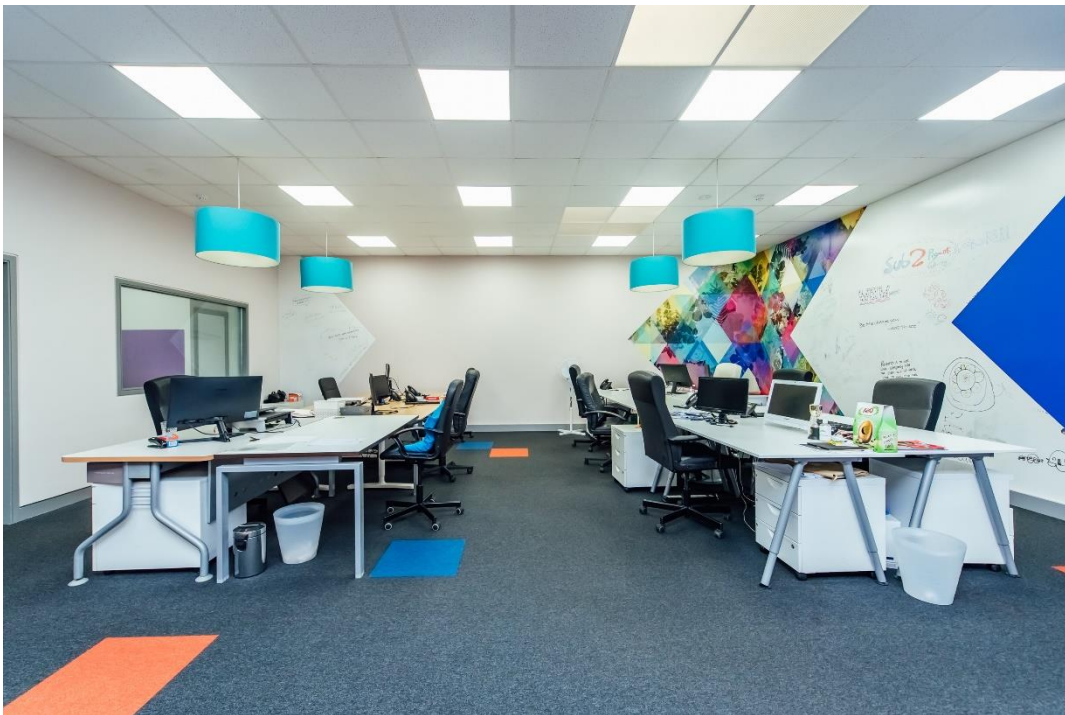
DESCRIPTION

The property comprises of a high profile, state of the art, office/ showrooms extending to c.467 sq. m / 5,025 sq. ft. The building is finished to a high standard and laid out over two floors with open plan cellular offices, canteen, Toilets and showroom area.











SELLING AGENT:

J.P. & M. Doyle,
105 Terenure Road East,
Dublin 6,
D06 X029.

Rent: €55,000 P/A

Plus Vat, Rates & Service
Charge

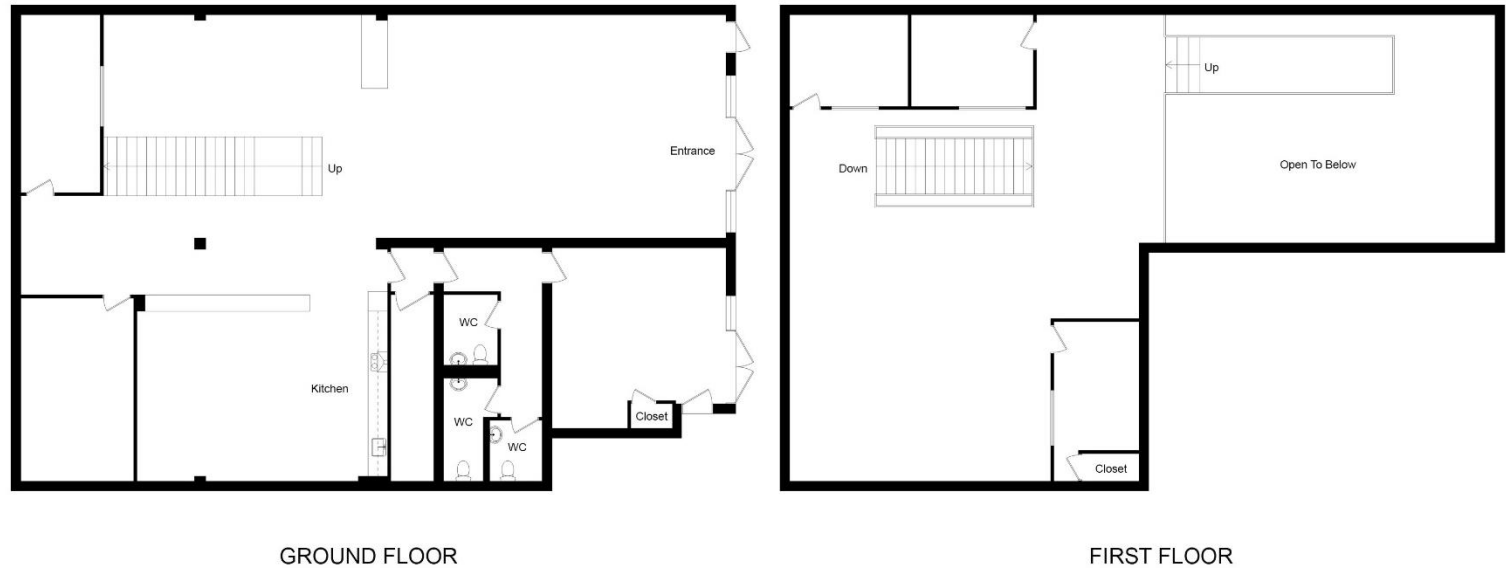
Telephone:

(01) 490 32 01

Email:

enquiries@jpmdoyle.ie

UNIT 6 COOLMINE CENTRAL, COOLMINE INDUSTRIAL ESTATE, DUBLIN 15



J.P. & M. Doyle Ltd., for themselves and for the vendors of this property whose agents they are, give notice that:

- (1) the particulars are set out as a general outline for the guidance of intending purchasers and do not constitute part of an offer or contract.
- (2) all description, dimensions, references to condition and necessary permission of use and occupation, and other details are given in good faith and are believed to be correct, but any intending purchasers or tenants should not rely on them as statements or representations of fact but must satisfy themselves by inspection or otherwise as to the correctness of each of them.
- (3) no person in the employment of J.P. & M. Doyle Ltd. has any authority to make or give any representations or warranty whatever in relation to the property.