

Contemporary style home in an elevated situation

Creeslough, Co. Donegal, F92 WN53

savills



Contemporary style home in an elevated situation

Creeslough, Co. Donegal, F92 WN53



Contemporary style home in an elevated situation

Creelough, Co. Donegal, F92 WN53



About this property

Umerafad is an elegant home which enjoys an elevated situation overlooking Duntally River, the rolling countryside and Sheephaven Bay. There are views of Muckish Mountain in the foreground behind Creelough. Built in 2001, the house was recently renovated in 2024 to a high standard.

Approached off a quiet road accessed from the N56 road in Creelough which leads towards Doe Castle, a gated entrance leads to the front where there is ample parking surrounding the house. The front door leads into a spacious entrance hall, which offers access to the main reception rooms on the ground floor. The layout is open-plan and is suitable for modern-day family living. The sitting / dining room enjoys multi aspect views along with a glass feature wall and electric fireplace, with a sun room located off this.

Both the entrance hall and sitting/dining room are accessed from the kitchen which is newly fitted with built-in cabinetry and an island, complimented by fully built integrated appliances. A utility room neatly adjoins this in addition to a wc. The ground floor also features an ensuite bedroom and a lounge.

Leading upstairs to the first floor, there are three bedrooms. The master bedroom includes an ensuite comprising of a walk-in shower. There are two further bedrooms, one with an ensuite, both generously sized, including a family bathroom. Modern features include a ground source heat pump underfloor heating system, resin flooring throughout and double glazed windows. In all the accommodation extends to about 251 sq m/ 2,707 sq ft as shown on the accompanying floorplans.

Contemporary style home in an elevated situation

Creeslough, Co. Donegal, F92 WN53



Property Details

Gardens and Grounds

The house is surrounded by a wraparound tarmacadam driveway and gardens surrounding it, all in a peaceful and private setting. In all the grounds extend to about 0.37 hectare / 0.9 acre in total.

Services

Ground Source Heat Pump, Septic Tank, Mains Water, Mains Electricity



Contemporary style home in an elevated situation

Creeslough, Co. Donegal, F92 WN53



Contemporary style home in an elevated situation

Creeslough, Co. Donegal, F92 WN53



Plans

 2,707 sq ft

 0.91 acres

Umerafad, Creeslough

Approximate Gross Internal Area = 251.5 sq m / 2707 sq ft

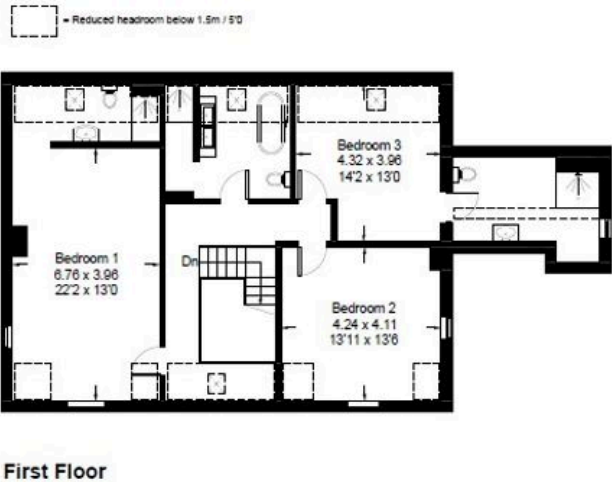


Illustration for identification purposes only, measurements are approximate, not to scale. Fourlabs.co © (ID1233073)

Contemporary style home in an elevated situation

Creelough, Co. Donegal, F92 WN53

savills



Local Area

County Donegal is located on the north-westerly tip of Ireland and is considered one of Ireland's most beautiful and unspoilt counties, renowned for its history, heritage and landscape. Donegal is typified by its dramatic towering sea cliffs, rolling lush hills and stunning beaches.

Local services are in both Creelough (2 km) and Portnablagh (9 km) which offer local amenities such as shopping, bars and restaurants.





Property Details

Key Features

- 4 bedrooms
- Elevated site
- Recently renovated
- South-facing situation
- About 0.9 acre

Services & Additional Information

Ground Source Heat Pump, Septic Tank,
Mains Water, Mains Electricity

BER

BER Rating = C1



Contemporary style home in an elevated situation

Creeslough, Co. Donegal, F92 WN53



Enquire



Liam McCarthy
Dublin - Country
+353 83 878 4989
liam.mccarthy@savills.ie

More Information



[View on website](#)



[View Digital Brochure](#)



[Property Search](#)

Viewing strictly by appointment

Property Ref: DUY240027

Residential & Country

33 Molesworth Street, D02 CP04
+353 (0) 1 618 1300



Important Notice: Savills, its clients and any joint agents give notice that 1: They are not authorised to make or give any representations or warranties in relation to the property either here or elsewhere, either on their own behalf or on behalf of their client or otherwise. They assume no responsibility for any statement that may be made in these particulars. These particulars do not form part of any offer or contract and must not be relied upon as statements or representations of fact. 2: Any areas, measurements or distances are approximate. The text, photographs and plans are for guidance only and are not necessarily comprehensive. It should not be assumed that the property has all necessary planning, building regulation or other consents and Savills have not tested any services, equipment or facilities. Purchasers must satisfy themselves by inspection or otherwise. *powered by* **FluoPro**