

# For Sale

Asking Price: €295,000

**Sherry  
FitzGerald**  
O'Neill



West End, Drimoleague, Co Cork.  
P47PX28

**BER** D1

[sherryfitz.ie](http://sherryfitz.ie)



Substantial four-bedroom residence, conveniently located within Drimoleague village. This property combines the convenience of village life with the space and versatility of a significant family home.

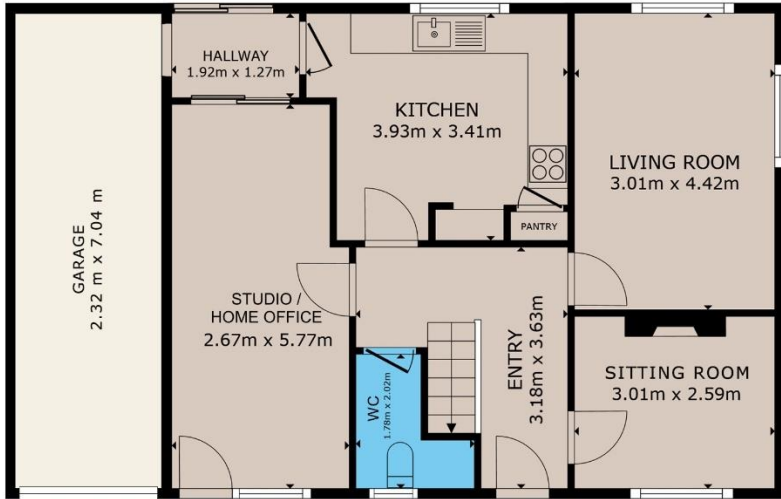
This well-proportioned house is designed with flexibility in mind. The ground floor features a bright kitchen with an oil fired Aga, a large living room and a separate sitting room. A third reception room offers the perfect opportunity for a home office, playroom or studio space.

Upstairs, the property continues to impress with four spacious bedrooms and a large family bathroom. The bright attic space is accessed via a stira and is fully floored with velux windows. The layout is ideal for a growing or extended family or those looking for extra space to accommodate guests.

One of the features of this village home is the attached garage providing additional space and workshop potential. To the rear, the property enjoys a private garden laid out in lawn, a rare find for such a central location, offering a peaceful outdoor retreat just steps away from local amenities.

Drimoleague is a West Cork village famed for its heritage walks and community spirit. Located centrally between the market towns of Skibbereen and Bantry, this home puts schools, shops and local services right on your doorstep.





GROUND FLOOR



FIRST FLOOR

GROSS INTERNAL AREA

TOTAL : 145,96m<sup>2</sup>

Whilst every attempt has been made to ensure the accuracy of the floor plan contained here, measurements of doors, windows, rooms and any other items are approximate and no responsibility is taken for any error, omission, or misstatement. This plan is for illustrative purposes only and should be used as such by any prospective purchaser.



**NEGOTIATOR**  
Niamh Moloney  
Sherry FitzGerald O'Neill  
37 North Street, Skibbereen,  
Co Cork  
T: 028 21404  
E: info@sfoneill.ie

**VIEWINGS**  
Strictly By Appointment Only

**ENERGY RATING**  
BER: D1  
Cert No.: 119279842  
EPI: 247.64 kWh/m<sup>2</sup>/yr

[sherryfitz.ie](http://sherryfitz.ie)  
[sfoneill.ie](http://sfoneill.ie)  
[myhome.ie](http://myhome.ie)  
[daft.ie](http://daft.ie)

**CONDITIONS TO BE NOTED:** A full copy of our general brochure conditions can be viewed on our website at <http://www.sherryfitz.ie/terms>, or can be requested from your local Sherry FitzGerald office. We strongly recommend that you familiarise yourself with these general conditions. While care has been taken to ensure that information contained in Sherry FitzGerald publications is correct at the time of publication, changes in circumstances after the time of publication may impact on the accuracy of this. PSRA Registration No. 004158