

For Sale

Asking Price: €298,500

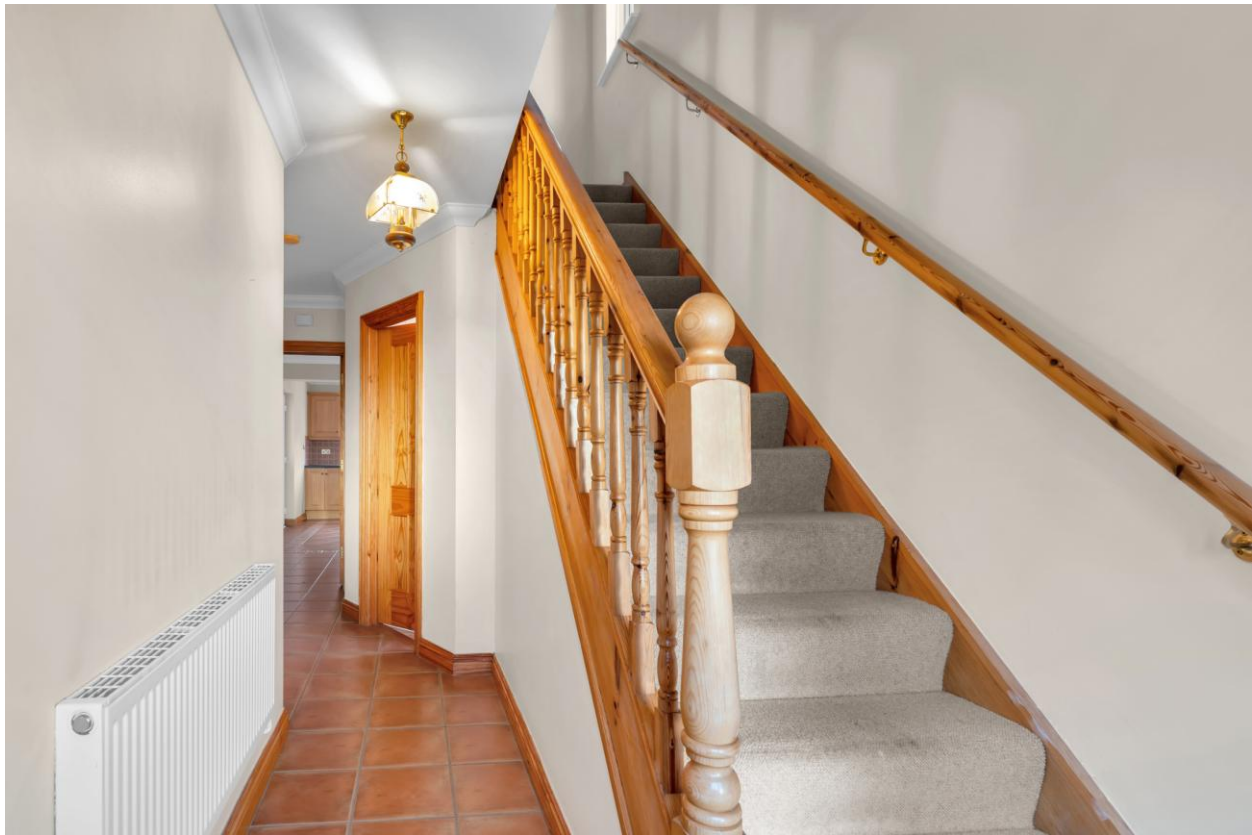
**Sherry
FitzGerald**
McDermott



1 Allendale Park, Baltinglass, Co. Wicklow, W91 N5P8.

BER C3

sherryfitz.ie



On a corner site in a cul-de-sac within the well-respected Allendale development on entry into Baltinglass, this lovely dormer bungalow presents in turn-key condition. It is within walking distance of local schools, recreational amenities, town centre and more.



Special Features & Services

- Oil heated.
- Double glazing.
- Side access.
- Paved patio garden.
- On-site parking.
- Walled in.

Accommodation

Entrance Hall 5.852 x 1.867: Tiled floor. Carpeted stairwell. Phone and alarm points.

Lounge 4.255 x 4.576: Open pine/wrought-iron fireplace. Coving and recessed lighting. Curtain poles and blinds.

Bedroom 1 4.358 x 3.253: Double built in wardrobes. Coving. Curtain poles and blind.

Kitchen/Diner 3.181 x 6.016: Fitted floor and wall units. Integrated oven, fan and hob. Coving. Recessed lighting. Tiled floor and splashback.

Utility Room 1.690 x 1.323: Counter unit. Tiled floor and splashback. Oil burner.

Shower/Guest WC 2.590 x 1.614: Toilet. Sink. walk in shower. Tiled floor and walls.

Landing 1.877 x 1.459: Carpeted. Walk-in airing press.

Bedroom 2 4.417 x 4.409: Built in wardrobe and dressing table. Laminate wooden flooring. Recessed lighting. Curtain pole and blind. Ensuite off.

En-Suite 1.811 x 2.309: Toilet. Sink. Shower. tiled floor and walls. Velux window.

Bedroom 3 4.1689 x 2.304: Laminate wooden flooring. Built in wardrobe. Velux window.

BER BER C3, BER No. 118789031

Directions

Follow Eircode: W91 N5P8





NEGOTIATOR

Charlie McDermott
Sherry FitzGerald McDermott
Station Road, Kildare Town, Co
Kildare
T: 045 531423 M: 087 2506064
E: kildare@sfmtcdermott.ie

sherryfitz.ie

CONDITIONS TO BE NOTED: A full copy of our general brochure conditions can be viewed on our website at <http://www.sherryfitz.ie/terms>, or can be requested from your local Sherry FitzGerald office. We strongly recommend that you familiarize yourself with these general conditions.
PSRA Registration No. 001945