



**SOUTH WEST  
BUSINESS PARK**  
Cheeverstown, Citywest, Dublin 24

A development by  
**ROHAN** 



# UNIT 1



## FOR SALE | TO LET

High-Bay Warehouse  
with Offices

Approx. 5,586 sq m  
(60,127 sq ft)

Site of Approx. 1.37  
Hectares (3.40 acres)

- ➔ High Profile Unit With Generous Dedicated Yard Area
- ➔ Access Controlled And Secure Business Park Environment
- ➔ Established Business Location Immediately Adjoining the LUAS Cheeverstown Stop
- ➔ Only Minutes From M7 and M50
- ➔ Generous yard depth of approx. 38m average

[www.rohanholdings.ie](http://www.rohanholdings.ie)





# SOUTH WEST BUSINESS PARK

Cheeverstown, Citywest, Dublin 24

## UNIT 1

### LOCATION

RAPID access to the M7 and the M50 Motorways.

EXCELLENT access for staff via public transport infrastructure such as the LUAS, Dublin Bus and proximity to arterial routes to and from Dublin city.

IMMEDIATE access to the nearby workforce and generous local amenities, such as shopping centres, hotels, leisure facilities, hospitals, post office, etc.

ESTABLISHED business location for quality warehouse/office operations adjacent to Citywest Business Campus and Magna Business Park.

### SOUTH WEST BUSINESS PARK

- Dublin's only new build logistics park with adjoining Luas Stop.
- Best in class warehouse units with air conditioned offices and LEED Silver sustainability credentials.
- Each unit offers dedicated car parking and secure yards.



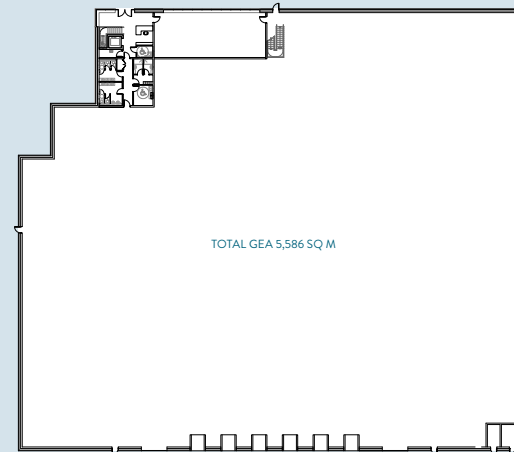


## FLOOR PLANS

1st Floor



Ground Floor



## SPECIFICATIONS/FEATURES

### GENERAL

- ⌚ LEED Silver targeted and LEED Gold for tenant fit out facilitated.
- ⌚ 12 metre clear internal height.
- ⌚ Steel portal frame construction.
- ⌚ Extensive secure service yard and car parking.
- ⌚ 6 dock levellers with tailgate loading.
- ⌚ 2 roller shutter doors.
- ⌚ Min. 60 kn./m2. (1,250 lbs./sq.ft.) floor loading.
- ⌚ 2.4 metre high wall to inside of external cladding wall.
- ⌚ LED lighting.
- ⌚ Electric vehicle (EV) charging.
- ⌚ Electrical distribution centre designed for three phase electrical supply and CT metering.
- ⌚ High quality actively managed estate.

### OFFICES

- ⌚ Feature reception area.
- ⌚ Open plan design suitable for compartmentation.
- ⌚ Shower facilities.
- ⌚ VRF air conditioning.
- ⌚ Suspended acoustic tiled ceilings with recessed LED lighting.
- ⌚ Painted and plastered walls.
- ⌚ Fully fitted toilets and tea station facilities.
- ⌚ Perimeter skirting trunking.
- ⌚ Fully bonded heavy contact carpet.

## ACCOMMODATION

### APPROXIMATE GROSS EXTERNAL FLOOR AREAS

Unit 1	Sq M	Sq Ft
Warehouse	5,040	54,250
Offices	546	5,877
<b>Total</b>	<b>5,586</b>	<b>60,127</b>

Site area of approx. 1.37 Hectares (3.40 acres)



# SOUTH WEST BUSINESS PARK



### OUR CLIENTS INCLUDE:



**Harvey Norman**



[www.rohanholdings.ie](http://www.rohanholdings.ie)



This project is registered with the certification goal of LEED Silver®. LEED (Leadership in Energy and Environmental Design) is a voluntary rating system to certify sustainable buildings and neighbourhoods.

Rohan Holdings is a proud member of the Irish Green Building Council. The IGBC is a non-profit organisation, launched in 2011 with member organisations and businesses from the entire value chain of the built environment. All are united in one common goal to accelerate the transformation of the built environment, related industry and supply chain to one that is sustainable through leadership, research, education and providing policy input to local and national government.

For more information, visit [www.igbc.ie](http://www.igbc.ie)

### TERMS

Available upon request.

### TARGETED BER



### RATES

Commercial Rates payable to Fingal County Council.

### OTHER

**OUTGOINGS**  
Available upon request.

### CONTACT



Styne House  
Upper Hatch Street  
Dublin 2, Ireland.

#### NIGEL HEALY

T 01 673 1635  
M 086 2575851  
E [nigel.healy@jll.com](mailto:nigel.healy@jll.com)

#### WOODY O'NEILL

T 01 673 1661  
M 086 272 4690  
E [woody.oneill@jll.com](mailto:woody.oneill@jll.com)



4th Floor, Block 2,  
Harcourt Centre,  
Harcourt Street,  
Dublin 2, Ireland.

#### JOHN CASEY

T 01 6624455  
M 086 7967072  
E [jcasey@rohanholdings.ie](mailto:jcasey@rohanholdings.ie)

#### JAMIE ROHAN

T 01 6624455  
E [jrohan@rohanholdings.ie](mailto:jrohan@rohanholdings.ie)

PSRA Licence No.: JLL 002273 | Rohan PSRA Licence No.003550

The particulars and information contained in this brochure are issued by Jones Lang LaSalle on the understanding that all the negotiations are conducted through them. Whilst every care has been taken in the preparation of the particulars and information they do not constitute an invitation to treat, an offer or a contract of any nature whether express or implied. All descriptions, dimensions, maps, plans, artists' impressions, references to condition, permissions or licences of use or occupation, access and other details are for guidance only and may be subject to change, without prior notification. The particulars and information are given in good faith but no intending purchaser/tenant should rely on them as statements or representations of fact and is specifically advised to undertake its own due diligence (at its own expense) to satisfy itself as to the accuracy and/or correctness of the particulars and information given. None of Jones Lang LaSalle, its employees, agents or affiliate companies, makes any warranty or representations whether express or implied with respect to the particulars and/or information and which are to the fullest extent permitted by law, disclaimed; furthermore, such parties accept no liability in respect of any loss suffered by any intending purchaser/tenant or any third party arising out of the particulars or information. Prices are quoted exclusive of applicable taxes such as VAT (unless otherwise stated) and all negotiations are conducted on the basis that the purchaser/lessee shall be liable for any applicable taxes or VAT arising out of the transaction.