

Knockranny Estate, Kilronan, Co Roscommon

Rare Private Waterfront Estate in the West of Ireland

savills



Knockranny Estate, Kilronan, Co Roscommon

Rare Private Waterfront Estate in the West of Ireland



Knockranny Estate, Kilronan, Co Roscommon

Rare Private Waterfront Estate in the West of Ireland



About this property

Occupying a spectacular waterfront position on the shores of Lough Meelagh, Knockranny Estate extends across a c.45-acre peninsula with 0.8 km of private shoreline. Surrounded by mature woodland and unspoilt countryside, the estate enjoys exceptional privacy and seclusion.

At its heart stands Knockranny House, a historic country residence dating from c.1820, occupying an elevated position overlooking the lake and grounds. The property presents a rare opportunity to restore a distinguished private waterfront estate.

Directly across the lake lies Kilronan Castle Estate. Both properties formed part of the wider King-Tenison estate, giving Knockranny rare provenance and placing it among the area's most historically significant private estates.

A collection of original stone stables, coach houses and estate buildings arranged around a traditional courtyard further enhances the estate, offering restoration potential subject to the necessary consents.

Combining extensive waterfront, historic architecture and exceptional seclusion, Knockranny Estate is a unique offering of character, heritage and significance.



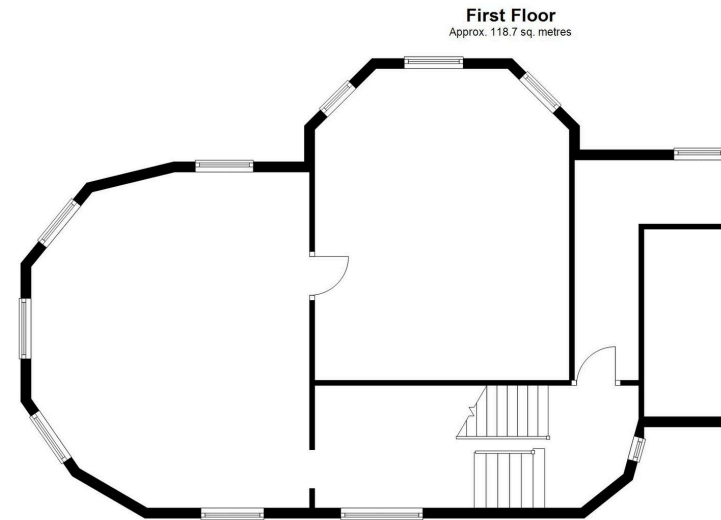
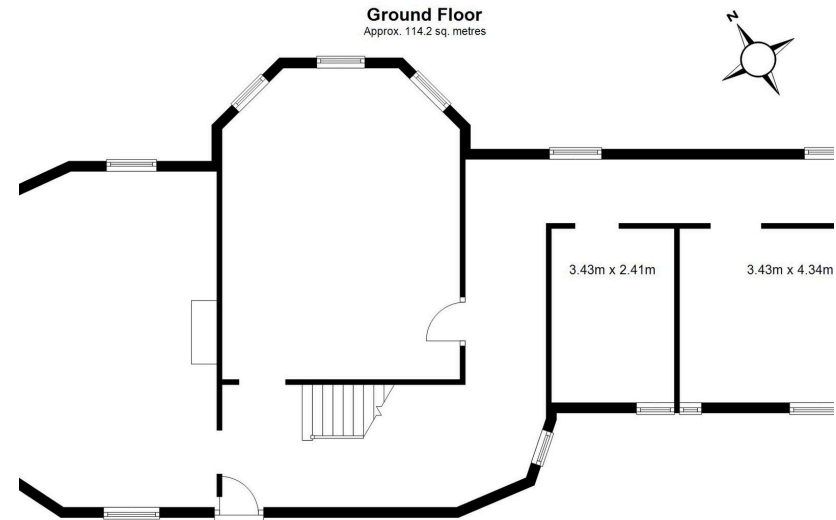
Knockranny Estate, Kilonan, Co Roscommon

Rare Private Waterfront Estate in the West of Ireland



the purpose of identification only, although believed to be correct. © Savills Real Estate Research

Plans



Knockranny, Kilronan, Co. Roscommon



Local Area

Despite its exceptional privacy, Knockranny Estate enjoys easy access to the west of Ireland's leading leisure and lifestyle amenities. Directly across Lough Meelagh lies Kilronan Castle Estate with its luxury hotel, spa and dining. Carrick-on-Shannon (12 km) and Drumshanbo (10 km) provide extensive services, while nearby villages offer local amenities. Recreational attractions include Lough Key Forest Park, boating, fishing and golf, with Strandhill Golf Club 44 km and Enniscrone Golf Club 80 km away.



Property Details

Key Features

Distinguished lakeside peninsula on about 45 acres of mature woodland and pasture

0.8 km of private shoreline along Lough Meelagh

Historic c.1820 country residence offering an idyllic canvas for restoration

Original stone stables, coach houses and courtyard buildings offering exceptional scope for ancillary uses (SPP)

Complete privacy within a secluded and unspoilt natural setting

Services & Additional Information

Currently derelict and BER Exempt, the property offers exceptional scope for comprehensive restoration and enhancement.

BER

BER Rating = Exempt

Knockranny Estate, Kilronan, Co Roscommon

Rare Private Waterfront Estate in the West of Ireland



Enquire



Cianan Duff

Ireland - Country

+353 (0) 86 386 1466

cianan.duff@savills.ie

More Information



[View on website](#)



[View Digital Brochure](#)



[Property Search](#)

Viewing strictly by appointment

Property Ref: DUY250098



Important Notice: Savills, its clients and any joint agents give notice that 1: They are not authorised to make or give any representations or warranties in relation to the property either here or elsewhere, either on their own behalf or on behalf of their client or otherwise. They assume no responsibility for any statement that may be made in these particulars. These particulars do not form part of any offer or contract and must not be relied upon as statements or representations of fact. 2: Any areas, measurements or distances are approximate. The text, photographs and plans are for guidance only and are not necessarily comprehensive. It should not be assumed that the property has all necessary planning, building regulation or other consents and Savills have not tested any services, equipment or facilities. Purchasers must satisfy themselves by inspection or otherwise. *powered by* **FloPro**