

A beautifully restored mill house
situated in a woodland setting

Altnapaste, Ballybofey, Co. Donegal, F93 F951



A beautifully restored mill house situated in a woodland setting

Altnapaste, Ballybofey, Co. Donegal, F93 F951



A beautifully restored mill house situated in a woodland setting

Altnapaste, Ballybofey, Co. Donegal, F93 F951



About this property

Altnapaste Mill is a renovated former mill house situated in a picturesque woodland setting near the River Finn. The property has been sympathetically restored throughout the years and features attractive exterior stonework and a wealth of period features internally in addition to well laid out accommodation suitable for modern day family living. It is located in a secluded valley and surrounded by mature ancient woodland with Altnapaste Mountain overlooking it from the Blue Stack Mountains.

The property is approached from a quiet lane off the R253, where a private gated entrance opens onto a tree-lined gravel driveway with ample parking to the front.

Upon entering the mill, the hallway provides access to an office, perfect for those who are looking to work from home. There is also a large utility/boot room with a wc. Adjacent to the office is a sitting room with an open fireplace, exposed ceiling timbers and the original great spur wheel system that drove the mill stone above.

The kitchen/dining room is a spacious and bright area with wooden flooring, fully built-in units, and island, and half-barn door which overlooks the courtyard. There is also a sunroom connected off the kitchen.

A spiral staircase from the kitchen area leads to the first floor and the spacious master bedroom suite. The first floor is also accessed from the main entrance hall and has three further bedrooms, including one further ensuite and a family bathroom. There is a large open area featuring the original mill stone which can be used as another quiet sitting room or other uses to suit the family.

In all the accommodation extends to about 2,938 sq ft/ 273 sq m, with a full layout shown on the adjoining floorplans.

Outbuildings

There is a large two-storey barn beside the house which features two double doors (extending to about 1,189 sq ft / 110 sqm). This is ideal as a workshop or for vehicle storage. A log store is also attached to the side of the barn.

A beautifully restored mill house situated in a woodland setting

Altnapaste, Ballybofey, Co. Donegal, F93 F951



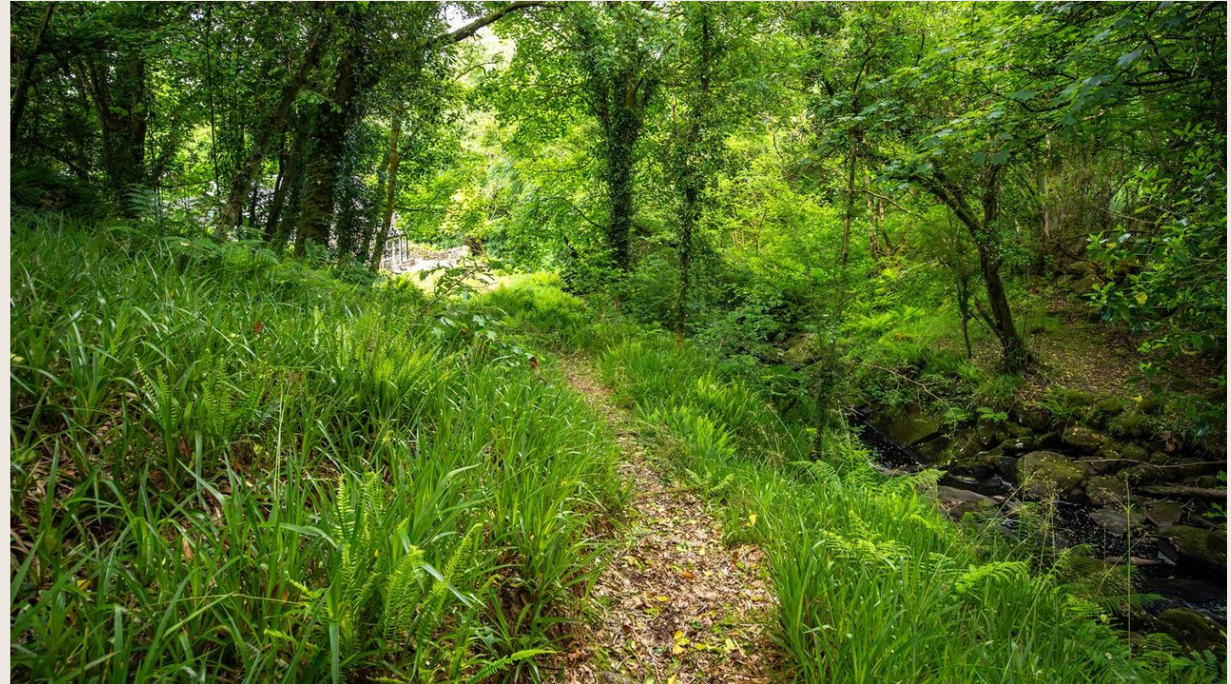
Property Details

Gardens & Grounds

Altnapaste Mill is located in a serene and secluded woodland setting, nestled alongside the banks of the River Finn. The gardens and grounds are enveloped by majestic tall trees which create a sheltered ambience.

At the front of the house is a delightful courtyard which adds to the charm of the property. Towards the back of the house is a picturesque woodland area with trails that meander alongside the beautiful stream.

The garden and surrounding woodland areas of the property are a haven for a wide variety of wildlife. Here you can feel totally submerged in nature with the sounds and tranquillity of the flowing stream running alongside the property. The head race, which supplies water from 90 metres upstream is still in operation. A hydroelectric turbine, installed when the initial restoration was undertaken, has the potential to be upgraded and supply part of the electricity for the house. In all the grounds extend to about 0.64 acre/0.26 hectare.



A beautifully restored mill house situated in a woodland setting

Altnapaste, Ballybofey, Co. Donegal, F93 F951



A beautifully restored mill house
situated in a woodland setting

Altnapaste, Ballybofey, Co. Donegal, F93 F951

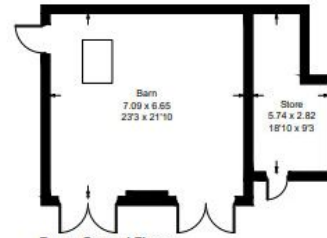


Plans

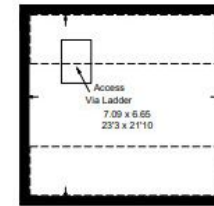
 2,938 sq ft

Altnapaste Mill

Approximate Gross Internal Area = 273 sq m / 2938 sq ft
Barn = 110.5 sq m / 1189 sq ft
Total = 383.5 sq m / 4127 sq ft

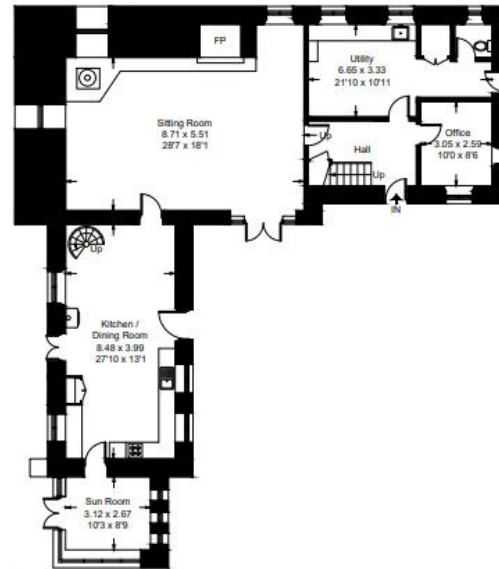


Barn - Ground Floor



Barn - First Floor

 Reduced headroom below 1.5m / 5ft



Ground Floor



First Floor

Illustration for identification purposes only, measurements are approximate,
not to scale. floorplansUsketch.com © (ID1095715)

A beautifully restored mill house
situated in a woodland setting

Altnapaste, Ballybofey, Co. Donegal, F93 F951



Local Area

County Donegal is situated in the North-West corner of Ireland. It is renowned for its rugged coastlines and unspoilt landscape. Altnapaste Mill is conveniently located just off the R253 with the nearest town being Cloghan (5 km) which provides local amenities. Ballybofey (8 km) is a key retail, commercial and recreational centre with an abundance of shops, good restaurants, pubs, hotels and The Balor Theatre. It is also a sporting hub hosting The Finn Valley Athletic Centre, Sean MacCumhail's GAA and the League of Ireland Finn Harps.



A beautifully restored mill house situated in a woodland setting

Altnapaste, Ballybofey, Co. Donegal, F93 F951



Property Details

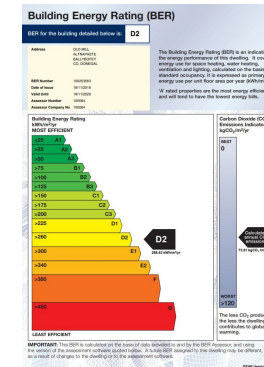
Key Features

- Period former mill house dating from 1838
- Picturesque setting alongside a mountain stream
- Tranquil woodland setting
- Courtyard area
- Two storey barn

Services & Additional Information

BER

BER Rating = D2

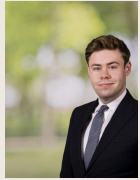


A beautifully restored mill house
situated in a woodland setting

Altnapaste, Ballybofey, Co. Donegal, F93 F951



Enquire



Liam McCarthy

Dublin - Residential & Country Agency

+353 83 878 4989

liam.mccarthy@savills.ie

More Information



[View on website](#)



[View Digital Brochure](#)



[Property Search](#)

Viewing strictly by appointment

Property Ref: DUY240107

Residential & Country

33 Molesworth Street, D02 CP04

+353 (0) 1 618 1300



Important Notice: Savills, its clients and any joint agents give notice that 1: They are not authorised to make or give any representations or warranties in relation to the property either here or elsewhere, either on their own behalf or on behalf of their client or otherwise. They assume no responsibility for any statement that may be made in these particulars. These particulars do not form part of any offer or contract and must not be relied upon as statements or representations of fact. 2: Any areas, measurements or distances are approximate. The text, photographs and plans are for guidance only and are not necessarily comprehensive. It should not be assumed that the property has all necessary planning, building regulation or other consents and Savills have not tested any services, equipment or facilities. Purchasers must satisfy themselves by inspection or otherwise. *powered by* **FluxPro**