

For Sale

Asking Price: €145,000

Sherry
FitzGerald
McDermott



Apt 2 Bradbury Complex, Stanhope Street, Athy, Co. Kildare,
R14 NA03.

BER E2

sherryfitz.ie



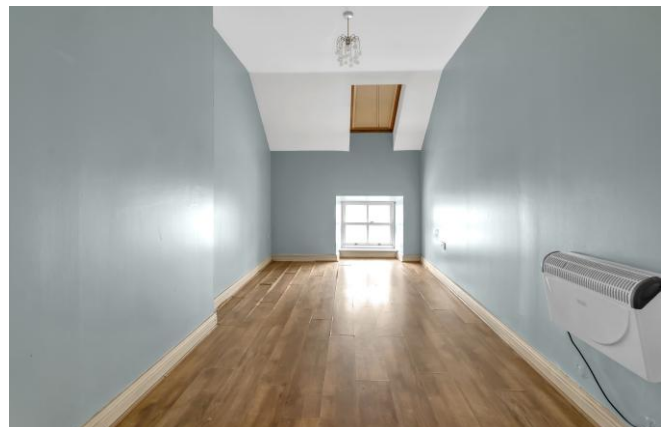
For sale by Online Auction on Thurs 28th May at 12:00pm via Offr.io website.

This spacious 2 Bedroom Second Floor Apartment is positioned on Stanhope/Leinster Street in the heart of Athy Town.

The living accommodation comprises of entrance hallway, sitting room / kitchen area, 2 bedrooms (master ensuite) and bathroom.

While the apartment would benefit from some upgrades, it offers great potential for the right buyer. This property should be viewed to be truly appreciated.

Viewing is highly recommended. Contact us now to arrange a viewing.



Accommodation

Kitchen / Living Area 8.19 x 3.64: Mixed tile & timber floor. Fitted units. Oven & hob. Tiled splash back. Velux window. Light fitting. Shelving. Storage heater.

Hallway 4.99 x 2.62: Timber floor. Recessed lights. Storage. Recessed lights. Access to attic.

Bedroom 1 5.88 x 2.49: Timber floor. Velux window. Storage heater. Light fitting.

En-Suite 1.78 x 1.64: Tiled floor. Partially tiled walls. W.C. W.H.B. Shower. Light fitting. Shaving light & socket. Electric ceiling fan. Shelving.

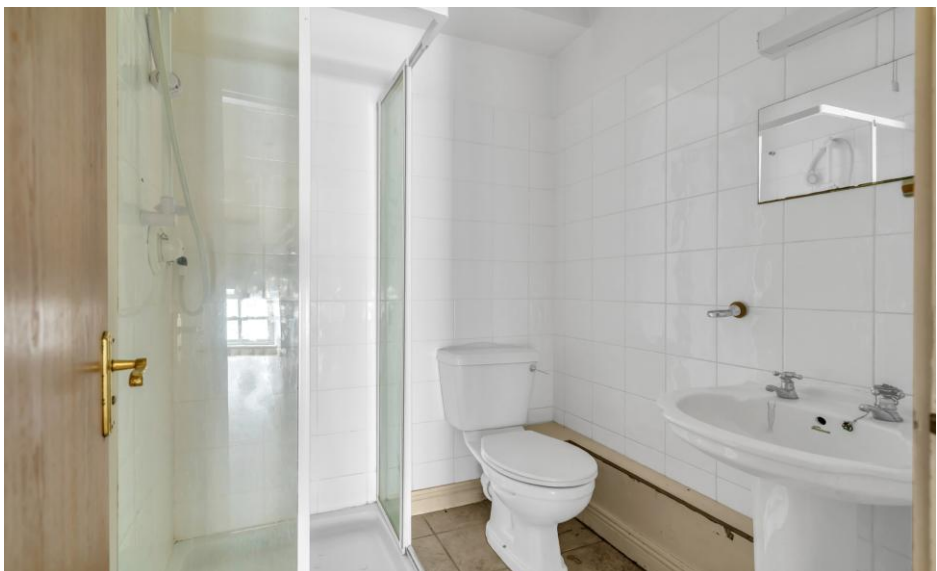
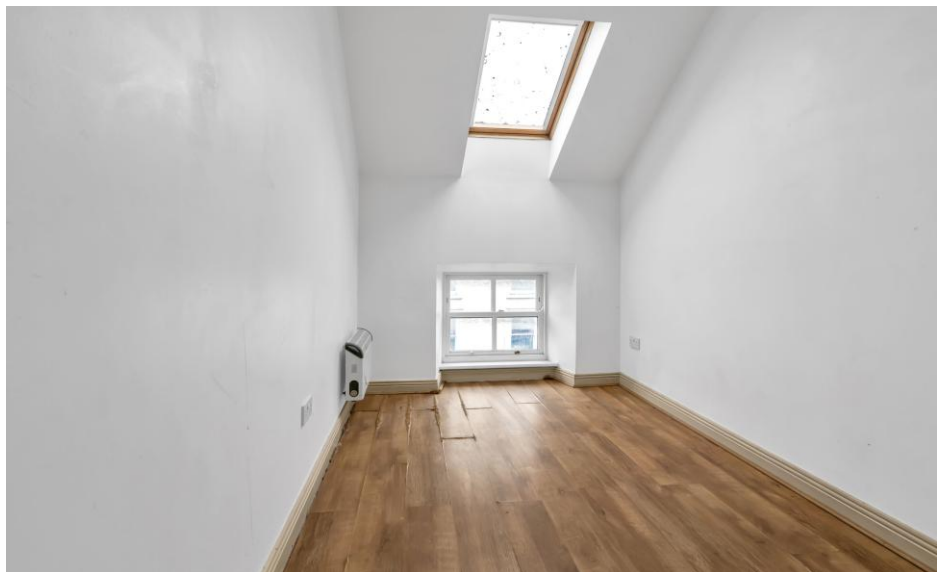
Bedroom 2 4.79 x 2.13: Timber floor. Velux window. Light fitting. Electric storage heater.

Bathroom 2.49 x 2.56: Tiled floor. Partially tiled walls. W.C. W.H.B. Bath. Shelving. Light fitting. Electric wall fan. Electric wall heater.

BER BER E2, BER No. 114468986

Directions

Accessed via Stanhope Street beside Boyle Sports. Follow Eircode: R14 NA03.





NEGOTIATOR

Adrian Harley
Sherry FitzGerald McDermott
Stanhope Street, Athy, Co Kildare
T: 059 8632797 M: 085 8343817
E: athy@sfmtcdermott.ie

sherryfitz.ie

CONDITIONS TO BE NOTED: A full copy of our general brochure conditions can be viewed on our website at <http://www.sherryfitz.ie/terms>, or can be requested from your local Sherry FitzGerald office. We strongly recommend that you familiarize yourself with these general conditions.
PSRA Registration No. 001945