

For Sale

Asking Price: €695,000



Lynam Cottage

Cronroe

Ashford

Co Wicklow

A67 E129

--View & Make offers directly on [MySherryFitz.ie](https://www.MySherryFitz.ie)--

BER D1

[MySherryFitz.ie](https://www.MySherryFitz.ie)





As pretty as a picture, this wonderful period cottage is oozing with charm and character at every turn. The original cottage, with Wicklow granite front is incredibly charming and hides a deceptively spacious home within.

As you enter through the front door you are in a small entrance porch with striking tiled flooring and timber panelling. From here, the central hallway leads to the right - to two very spacious double bedrooms with their own bathrooms. Small steps lead down to the wonderful reception room, with access to the gardens. This beautiful room is tastefully decorated and extremely bright - with garden views on all sides. The reclaimed timber flooring, deep set windows and sympathetic decor combine to create a welcoming and comfortable reception room. French doors open to the gardens - ideal for summer days and outdoor dining, while the spacious kitchen is adjacent. The kitchen has all the charm you would expect of a country cottage, with stable door, free standing bespoke units and garden views.

The gardens of Lynam Cottage are a joy to behold. Beautifully planted and lovingly maintained, the array of



Special Features & Services:

-

Accommodation:

Front Porch The ideal introduction to this charming period property. With tiled floor and access to the central hallway.

Living Room This wonderful reception room is flooded with light from the large windows, which offer exceptional views. French doors open to the sheltered outdoor dining and patio area. Reclaimed timber flooring, deep set windows and space for a stove or fireplace combine to create a gorgeous ambiance, while the impressive size of this reception room ensures ample room for family and friends.

Kitchen Bright and spacious, with excellent storage space and room for all appliances. The large free standing island unit, with marble top, is ideal for informal entertaining, while the large dining space is perfect for cosy family meals. The cottage style stable door leads directly to the rear garden,, adding further char to the room. The bright and neutral decor, combined with the beautiful tiled floor ensure this room is both comfortable and practical.

Bedroom 1 Large double bedroom with reclaimed timber flooring and deep set window overlooking the landscaped rear garden. High ceiling and tasteful decor throughout.

Ensuite Pretty shower room with power shower, tiled floor and fixtures and fittings of the highest quality.

Bedroom 2 Wonderful double bedroom exudes charm and character, with high ceiling and gorgeous garden views. Solid timber flooring and neutral decor.

Ensuite This spacious ensuite shower room has been equipped with fittings of the highest quality. The large walk in

Garden:

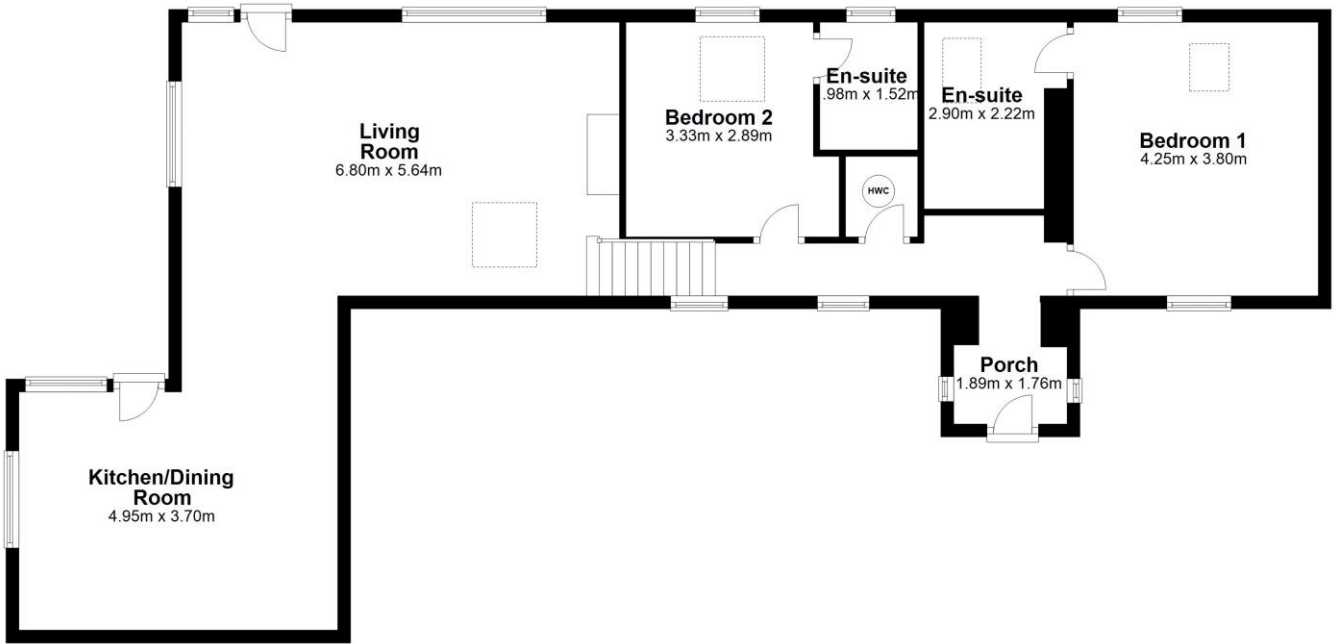
BER: BER D1, BER No. 107636441

Directions:

A67 E129



Floor Plan



Total area: approx. 100.3 sq. metres



NEGOTIATOR

Sherry FitzGerald Catherine O'Reilly
1 Bridge Street Arcade, Fitzwilliam Square,
Wicklow Town

0404 66466
info@sfcatherineoreilly.ie

MySherryFitz.ie



CONDITIONS TO BE NOTED: A full copy of our general brochure conditions can be viewed on our website at <http://www.sherryfitz.ie/terms> or can be requested from your local Sherry FitzGerald office. We strongly recommend that you familiarize yourself with these general conditions.
PSRA Registration No. 003161