

# A charming cottage set in an idyllic location in Connemara

Lehanagh, Cashel, Co. Galway, H91 EY8H

savills





# A charming cottage set in an idyllic location in Connemara

Lehanagh, Cashel, Co. Galway, H91 EY8H





# A charming cottage set in an idyllic location in Connemara

Lehanagh, Cashel, Co. Galway, H91 EY8H



## About this property

Lehanagh is a charming coastal retreat set in the heart of Connemara. This delightful property blends traditional character with practical living, making it an ideal holiday home or a peaceful escape.

Built in the traditional style, it features whitewashed walls, a slate roof and vibrant blue-painted windows and doors. Inside, the home is warm and inviting with tiled floors, timber ceilings and a cosy open-plan layout.

The ground floor comprises a welcoming foyer leading into a bright living room with a traditional fireplace and dual-aspect windows. A dining area connects seamlessly to the kitchen, which is fitted with wall and floor units and enjoys views of the surrounding gardens. The primary bedroom is generously sized and filled with natural light, while a second bedroom is also located off the dining/living room. A well-appointed bathroom with bath and shower completes the accommodation on this level.

Upstairs, the converted attic space provides a versatile area with timber-panelled walls and Velux windows, perfect as a studio, reading nook, or additional accommodation.

### Gardens and Grounds

Outside, the cottage sits on a mature site with a gravel driveway and natural landscaping. Outdoor seating areas provide stunning views of the surrounding mountains and coastline, creating an idyllic garden setting.

# A charming cottage set in an idyllic location in Connemara

Lehanagh, Cashel, Co. Galway, H91 EY8H

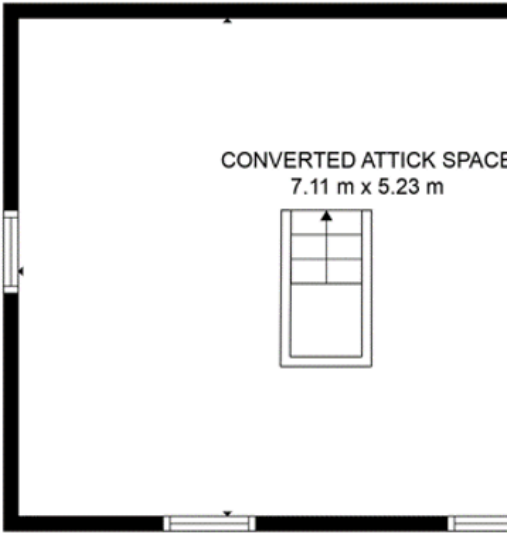
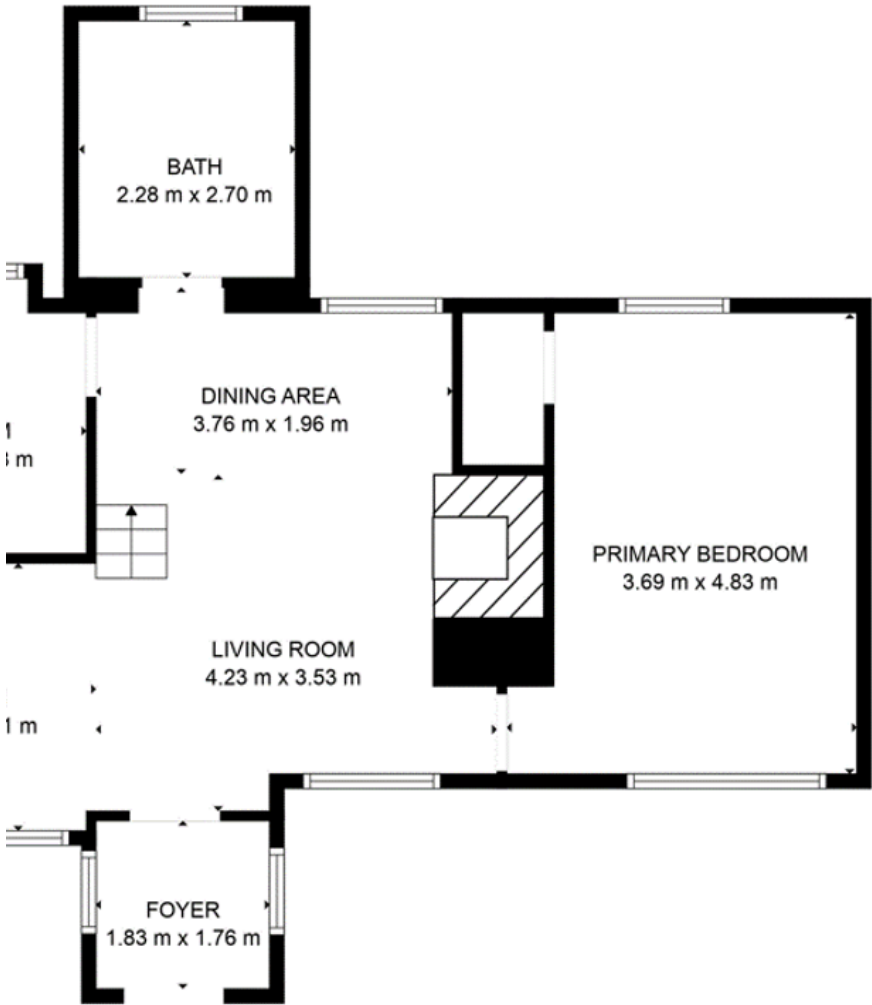


A charming cottage set in an idyllic location in Connemara

Lehanagh, Cashel, Co. Galway, H91 EY8H



Plans



FLOOR 2



# A charming cottage set in an idyllic location in Connemara

Lehanagh, Cashel, Co. Galway, H91 EY8H

savills



## Local Area

The cottage is located in County Galway on the west coast of Ireland, a county that offers spectacular scenery with its many breathtaking land and seascapes. Galway is positioned in the middle of the Wild Atlantic Way and is etched with epic coastlines, magnificent beaches, and lofty mountain peaks. Lehanagh enjoys a convenient location which is rich in walking trails, fishing spots, and scenic drives, making it a haven for outdoor enthusiasts. Cashel is a small village in Connemara on the Wild Atlantic Way.





# A charming cottage set in an idyllic location in Connemara

Lehanagh, Cashel, Co. Galway, H91 EY8H



## Property Details

### Key Features

- Traditional Connemara cottage
- Ideal holiday home
- Versatile accomadation
- Mature site
- Excellent location close to Cashel Bay, Roundstone and Clifden

### Services & Additional Information

OFCH

### BER

BER Rating = G



# A charming cottage set in an idyllic location in Connemara

Lehanagh, Cashel, Co. Galway, H91 EY8H



## Enquire



**Liam McCarthy**  
Dublin - Country  
+353 83 878 4989  
liam.mccarthy@savills.ie

## More Information



[View on website](#)



[View Digital Brochure](#)



[Property Search](#)

**Viewing strictly by appointment**

Property Ref: DUY250314

**Residential & Country**

33 Molesworth Street, D02 CP04

+353 (0) 1 618 1300



Important Notice: Savills, its clients and any joint agents give notice that 1: They are not authorised to make or give any representations or warranties in relation to the property either here or elsewhere, either on their own behalf or on behalf of their client or otherwise. They assume no responsibility for any statement that may be made in these particulars. These particulars do not form part of any offer or contract and must not be relied upon as statements or representations of fact. 2: Any areas, measurements or distances are approximate. The text, photographs and plans are for guidance only and are not necessarily comprehensive. It should not be assumed that the property has all necessary planning, building regulation or other consents and Savills have not tested any services, equipment or facilities. Purchasers must satisfy themselves by inspection or otherwise. *powered by* **FluoPro**