

LOWER GROUND FLOOR PLAN

FLOOR AREAS

Lower Ground Floor Plan
 Total Floor Area = 814 m²
 Net Floor Area = 617 m²
 Staircase Area = 74 m²
 Lift Area = 23 m²
 Total Area = 714 m²
 Ground Floor Plan = 824 m²
 Lower Ground Floor Plan = 181.2 m²
 Total Area = 1005.2 m²

FLOOR LAYOUT

U.I. = MANAGER OF TEAM 1

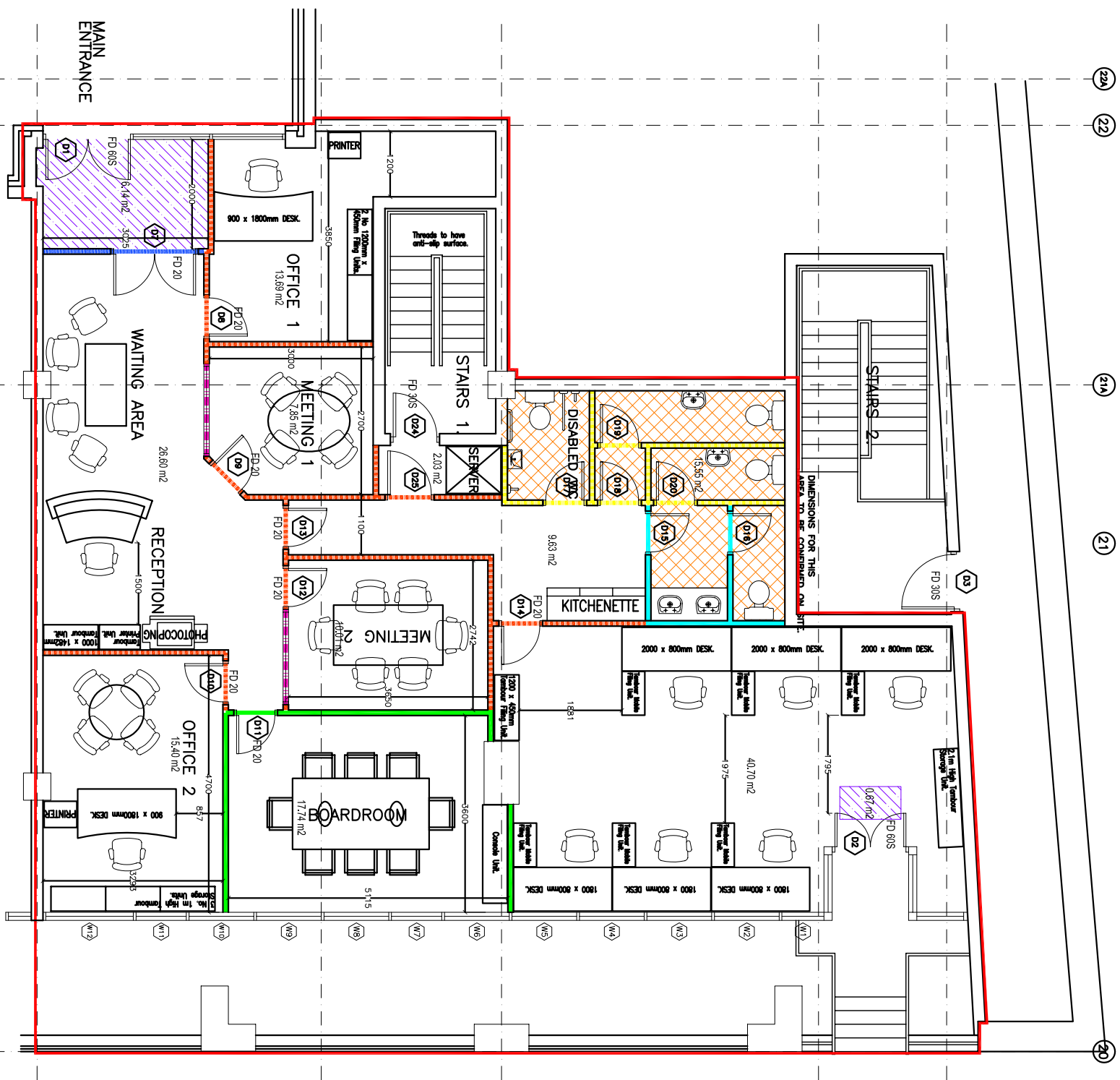
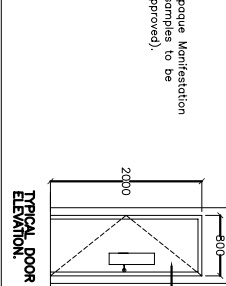
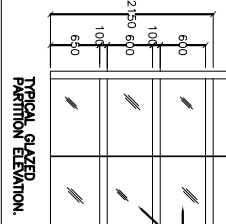
GROUND FLOOR PLAN - 1 BOARDROOM,
 7 WORKSTATIONS, 2 MEETING ROOMS,
 2 PHOTO COPYING/FAX UNITS,
 21 WORKSTATIONS, MOBILE STORAGE AREA

FLOOR FINISHES

TYPE 1: 100% Carpet, 100% Acoustic Tiles
 TYPE 2: 100% Carpet, 100% Acoustic Tiles
 TYPE 3: 100% Carpet, 100% Acoustic Tiles
 TYPE 4: 100% Carpet, 100% Acoustic Tiles
 TYPE 5: 100% Carpet, 100% Acoustic Tiles
 TYPE 6: 100% Carpet, 100% Acoustic Tiles
 TYPE 7: 100% Carpet, 100% Acoustic Tiles
 TYPE 8: 100% Carpet, 100% Acoustic Tiles
 TYPE 9: 100% Carpet, 100% Acoustic Tiles

PARTITION SPECIFICATION

TYPE 1: 100% Acoustic Tiles
 TYPE 2: 100% Acoustic Tiles
 TYPE 3: 100% Acoustic Tiles
 TYPE 4: 100% Acoustic Tiles
 TYPE 5: 100% Acoustic Tiles
 TYPE 6: 100% Acoustic Tiles
 TYPE 7: 100% Acoustic Tiles
 TYPE 8: 100% Acoustic Tiles
 TYPE 9: 100% Acoustic Tiles



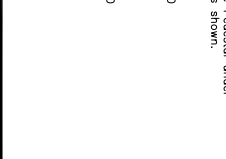
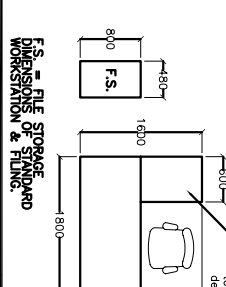
GROUND FLOOR PLAN

FLOOR FINISHES

TYPE 1: 100% Carpet, 100% Acoustic Tiles
 TYPE 2: 100% Carpet, 100% Acoustic Tiles
 TYPE 3: 100% Carpet, 100% Acoustic Tiles
 TYPE 4: 100% Carpet, 100% Acoustic Tiles
 TYPE 5: 100% Carpet, 100% Acoustic Tiles
 TYPE 6: 100% Carpet, 100% Acoustic Tiles
 TYPE 7: 100% Carpet, 100% Acoustic Tiles
 TYPE 8: 100% Carpet, 100% Acoustic Tiles
 TYPE 9: 100% Carpet, 100% Acoustic Tiles

PARTITION SPECIFICATION

TYPE 1: 100% Acoustic Tiles
 TYPE 2: 100% Acoustic Tiles
 TYPE 3: 100% Acoustic Tiles
 TYPE 4: 100% Acoustic Tiles
 TYPE 5: 100% Acoustic Tiles
 TYPE 6: 100% Acoustic Tiles
 TYPE 7: 100% Acoustic Tiles
 TYPE 8: 100% Acoustic Tiles
 TYPE 9: 100% Acoustic Tiles



NOTES:
 FIGURED DIMENSIONS ONLY TO BE USED
 THIS DRAWING IS COPYRIGHT ©

PROJECT TITLE:
 PROPOSED OFFICE FIT-OUT FOR
 ANNI BRADY & ASSOCIATES AT
 HARCOURT PLACE, DUBLIN 2,
 AND LOWER GROUND FLOOR

DATE: 19/05/04
SCALE: 1:50
DESIGNER: FITZGERALD & ASSOCIATES ARCHITECTS

FITZGERALD & ASSOCIATES ARCHITECTS

77-79, Abbot Street, Dublin 1, D04 R774
 Tel: 01-406 5974 Fax: 01-406 5974 E-Mail: info@fitzgeraldassociates.ie

CONSTRUCTION

DRAWING NO. GFF-020
 PROJECT NO. 0404
 JOB FILE NO. C-GFF-010
 SCALE: 1:50
 DATE: 15/03/2004
 DRAWN BY: MAMEN
 CHECKED BY: MAMEN