

For Sale

Asking Price: €650,000

Sherry
FitzGerald



14 Inchicore
Terrace North,
Inchicore, Dublin
8, D08 F62Y

BER E2

sherryfitz.ie



Sherry FitzGerald are thrilled to introduce 14 Inchicore Terrace North to the market. A stunning three-bedroom end of terrace double fronted home with rear laneway access in the much sought after CIE Railway Works. Coming to the market in pristine condition having been recently renovated from top to toe by the current owner, this outstanding property is sure to attract a huge level of interest.

Behind the quaint exterior the accommodation comprises of; welcoming entrance hall which leads to the living room on the righthand side that opens up to the south face courtyard, a real sun trap during the long summer days. To the left-hand side there is a large open plan kitchen / dining room with a utility room located to the rear. Upstairs there are two double bedrooms, a large single bedroom and a refitted family bathroom.

Outside: To the front of the property there is a sizeable mature garden with gated pedestrian access path leading to the front door. The south facing enclosed courtyard garden is extremely private and a real suntrap which is laid with starstone gravel and benefits from a secure rear gated access door.



Accommodation

Entrance Hall 0.92m x 1.50m (3' x 4'11"): Double doors opening to the entrance hall with stairs to first floor landing and leading through to the living room and dining room.

Living Room 2.98m x 4.75m (9'9" x 15'7"): Double glazed sliding sash window with original timber shutters to front aspect, feature fireplace with inset Charnwood wood burning stove, hardwood flooring and double doors opening to the courtyard garden.

Dining Room 4.33m x 4.52m (14'2" x 14'10"): Double glazed sliding sash window to front aspect, understairs storage, feature fireplace with tiled hearth, hardwood flooring and opening to the kitchen area.

Kitchen 4.33m x 3.11m (14'2" x 10'2"): Double glazed sliding sash window to both rear/side aspects, fitted with matching base/wall units, ample worktop space with bevelled tiled splash back, inset sink with mixer tap, built in electric oven, gas ring burner with extractor above, space for free standing fridge freezer, plumbing for dishwasher, tiled flooring and opening to the utility room.

Utility Room 1.83m x 1.55m (6' x 5'1"): Fitted with sizeable worktop, with plumbing for washing machine, space for dryer, Viessmann gas boiler, tiled floor coverings and rear door to the enclosed courtyard garden.

Bedroom 1 2.90m x 4.37m (9'6" x 14'4"): Sizeable double bedroom with double glazed sliding sash window to front aspect, newly fitted wardrobe, and carpeted floor coverings.

Bedroom 2 4.33m x 2.92m (14'2" x 9'7"): Sizeable double bedroom with double glazed sliding sash window to rear aspect, Velux skylight and carpeted floor coverings.

Bedroom 3 3.50m x 2.45m (11'6" x 8'): Spacious single bedroom with double glazed sliding sash window to front aspect, built in wardrobe, wood panelling to ceiling, loft access and carpeted floor coverings.

Bathroom 2.08m x 2.25m (6'10" x 7'5"): Fitted with corner shower with sliding glass shower screen, mains fed rain fall shower with bevelled tiled back splash, Edwardian rectangular basin with washstand, WC, deep fill bath with timber panelling surround, built in storage, Velux skylight and tiled floor coverings.

Outside To the front of the property there is a sizeable mature garden with gated pedestrian access path leading to the front door. The south facing enclosed courtyard garden is extremely private and a real suntrap which is laid with starstone gravel and also benefits from a secure rear access door.





BER BER E2, BER No. 109686303

Special Features & Services

- Period Features
- Refitted Family Bathroom
- Viessmann Gas Boiler installed 2023
- Charnwood Wood Buring Stove



Location:

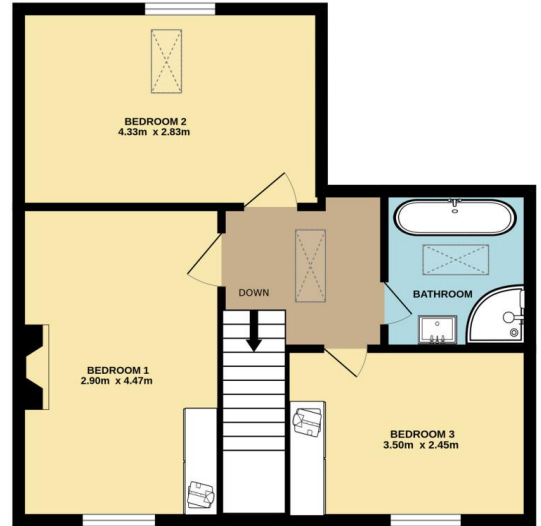
Inchicore Terrace North is ideally located in the CIE Railway Works, the oldest walled estate in Britain & Ireland. There are a range of amenities on your doorstep including shops, cafes, bars & restaurants. There are some excellent outdoor leisure facilities close by such as The Phoenix Park, Memorial Gardens, IMMA & Royal Hospital Kilmainham and The Grand Canal. The Red Line LUAS is a short stroll away making the city centre easily accessible.



GROUND FLOOR



1ST FLOOR



Not to scale, identification only
Made with Metropix ©2024



NEGOTIATOR
Eoin Boylan
Sherry FitzGerald
3 Sundrive Road, Kimmage,
Dublin 12, D12 V9HV
T: 01 4922 444
E: sundrive@sherryfitz.ie

MORTGAGE ADVICE

SOLICITOR

sherryfitz.ie

CONDITIONS TO BE NOTED: A full copy of our general brochure conditions can be viewed on our website at <http://www.sherryfitz.ie/terms>, or can be requested from your local Sherry FitzGerald office. We strongly recommend that you familiarize yourself with these general conditions.
PSRA Registration No. 002183