

For Sale

Asking Price: €575,000

**Sherry
FitzGerald**
O'Leary Kinsella



21 Main Street, Enniscorthy,
Co. Wexford,
Y21 K3C5

BER EXEMPT

sherryfitz.ie



Situated in the heart of Enniscorthy, No. 21 Main Street is a stunning five-bedroom property presented in immaculate, turnkey condition. Extending to approximately 265 sq. m (2,861 sq. ft), this beautifully restored and extended home seamlessly blends period charm with contemporary luxury.

From the moment you step inside, the quality of finish and attention to detail are immediately evident. The property boasts an impressive open-plan kitchen, dining and living space to the rear, flooded with natural light from large sliding doors and overhead skylights, creating a bright and welcoming hub of the home. The sleek, modern kitchen features high-end cabinetry, integrated appliances and a generous island, ideal for both everyday living and entertaining.

To the front, elegant reception rooms retain their original character with ornate fireplaces, high ceilings and decorative finishes, offering warm and inviting spaces for relaxation.

The accommodation is generously proportioned throughout, with five well-appointed bedrooms across the upper floors. Each room is tastefully decorated, combining comfort and style, while the bathrooms are finished to a high standard with quality fittings.

Externally, the property benefits from a private, low-maintenance courtyard garden—perfect for outdoor dining or quiet enjoyment. In addition, the ground floor offers flexible commercial/office space, presenting an excellent opportunity for a variety of uses or potential income.



Located on Main Street, this property enjoys unparalleled convenience with a wide range of shops, cafés, schools and amenities all within walking distance, while also offering easy access to transport links.

This is a rare opportunity to acquire a substantial and beautifully presented home in a prime town centre location—ideal for those seeking space, style and versatility.

Accommodation

Entrance Hall/Shop Floor 5.66m x 8.53m (18'7" x 28')

Ground Floor Central Hallway 1.50m x 5.75m (4'11" x 18'10"):

Back Room / Office 4.21m x 2.53m (13'10" x 8'4"):

Fitting Room 3.86m x 1.80m (12'8" x 5'11"):

Guest WC 1.28m x 0.90m (4'2" x 2'11"):

Hallway to rear extension 6.25m x 0.90m (20'6" x 2'11"):

Kitchen/Dining Room Extension 7.42m x 4.95m (24'4" x 16'3"):

Walled Garden 12.00m x 5.00m (39'4" x 16'5"):

2nd floor

Landing 2.81m x 4.39m (9'3" x 14'5"):

Living Room 3.30m x 5.77m (10'10" x 18'11"):

Study/Office 2.72m x 4.11m (8'11" x 13'6"):

Master Bedroom 3.86m x 5.05m (12'8" x 16'7"):

En-suite Bathroom 2.60m x 2.79m (8'6" x 9'2"):

Sitting Area 1.33m x 3.17m (4'4" x 10'5"):

3rd floor

Landing 1.49m x 5.59m (4'11" x 18'4"):

Bedroom 2 3.16m x 2.48m (10'4" x 8'2"):

Bedroom 3 4.51m x 3.19m (14'10" x 10'6"):

Bedroom 4 2.83m x 4.05m (9'3" x 13'3"):

Bedroom 5 3.86m x 2.73m (12'8" x 8'11"):

Hallway 1.22m x 4.20m (4' x 13'9"):

Shower Room 2.53m x 3.39m (8'4" x 11'1"):





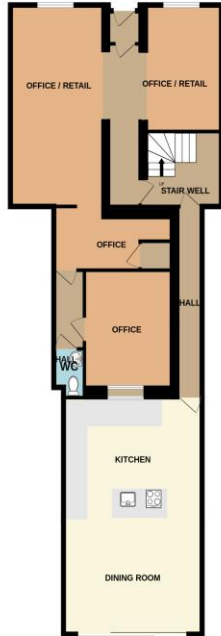
Special Features & Services

- **Superb town centre location** on Main Street, within walking distance of all amenities
- **Spacious 5-bedroom layout** extending to approx. 265 sq. m (2,861 sq. ft)
- **Stunning open-plan kitchen/dining/living area** with skylights and large sliding doors
- **Immaculate condition throughout**, combining period charm with modern finishes

BER Exempt



FLOOR 1
1249 sq.ft. (116.0 sq.m.) approx.



FLOOR 2
806 sq.ft. (74.9 sq.m.) approx.



FLOOR 3
806 sq.ft. (74.9 sq.m.) approx.



TOTAL FLOOR AREA: 2861 sq.ft. (265.8 sq.m.) approx.

Whilst every attempt has been made to ensure the accuracy of the floorplan contained here, measurements of doors, windows, rooms and any other items are approximate and no responsibility is taken for any error, omission or mis-statement. This plan is for illustrative purposes only and should be used as such by any prospective purchaser. The services, systems and appliances shown have not been tested and no guarantee as to their operability or efficiency can be given.
Made with Metropix ©2024

Directions

Y21 K3C5





NEGOTIATOR

Declan O'Leary
Sherry FitzGerald O'Leary
Kinsella
11 Slaney Street, Enniscorthy, Co
Wexford
T: 053 92 37322
E: sfol@wexproperty.ie

SOLICITOR

sherryfitz.ie

CONDITIONS TO BE NOTED: A full copy of our general brochure conditions can be viewed on our website at <http://www.sherryfitz.ie/terms>, or can be requested from your local Sherry FitzGerald office. We strongly recommend that you familiarise yourself with these general conditions. While care has been taken to ensure that information contained in Sherry FitzGerald publications is correct at the time of publication, changes in circumstances after the time of publication may impact on the accuracy of this.

PSRA Registration No. 001510