

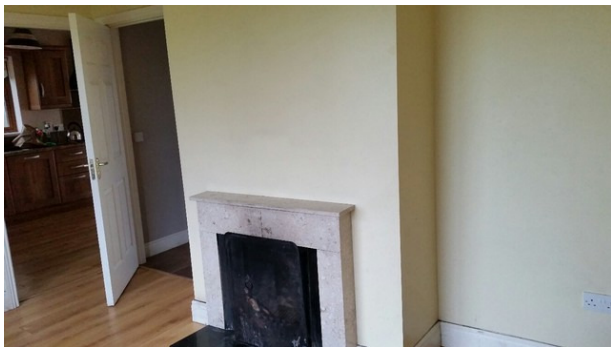
**WOULFE & CO. AUCTIONEERS.**

**ACCOMODATION**

**Entrance Hallway: 16' x 3'6**



**Kitchen/Dining: 9'6 x 17'7 (fitted kitchen)**



**Living Room:**



**9'9 x 17'6 (fire place)**

**Utility: 5'9 x 4'7**

**Downstairs Toilet: 5'9 x 4'5**

**Study/Bedroom Five: 9'8 x 11'1**

**Bedroom One: 10'4 x 8'11**



**Bedroom Two: 13' x 8'11**

**Bedroom Three: 10'5 x 9'6**

**Bedroom Four: 9' x 9'5**

**En suite: 3'6 x 6'5**



Please note that all measurements and details are believed to be correct but any intending purchaser should satisfy himself/herself or otherwise as to the correctness of these particulars.



**Bathroom: 6'1 x 9'**

### **FEATURES**

- Generous supply of power points
- Outside Lights front and rear
- Brown upvc windows with black fascia and soffit
- Tarmacadam driveway, Rear front & rear lawn
- Located near the church, school and shops and on the national bus route
- Located approximately 5 miles from the heritage town of Listowel & 5 miles from the market town of Abbeyfeale & the Kerry airport



### **LOCATION**

The property is located just at the entrance to Duagh village on the left hand side if approaching from Abbeyfeale

### **VIEWING**

Please ring us to make an appointment. We are open 9.30am to 5.30pm Monday to Friday.

### **MORTGAGE INFORMATION**

We can offer independent mortgage advice dealing with several financial institutions offering the most competitive mortgages in the marketplace to suit your needs. Telephone Declan on 068 32141/087 7617573 for a free and confidential telephone consultation to suit your mortgage requirements.

Please note that all measurements and details are believed to be correct but any intending purchaser should satisfy himself/herself or otherwise as to the correctness of these particulars.