

For Sale

Asking Price: €295,000

**Sherry
FitzGerald**
O'Neill



Outline for illustration only,
Not to be relied upon.

Lisnagoth Cottage, Canfie, Ardgroom,
Co. Cork, P75 KR94.

BER D1

sherryfitz.ie



Lisnagoth Cottage is a beautifully renovated and extended traditional farmhouse, with landscaped garden near Ardgroom Village on the Beara Peninsula and enjoying exceptional views of Kenmare Bay.

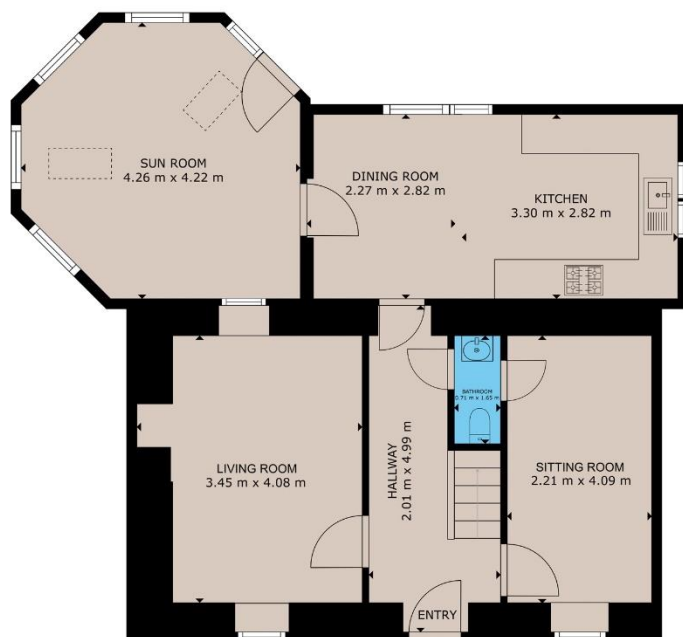
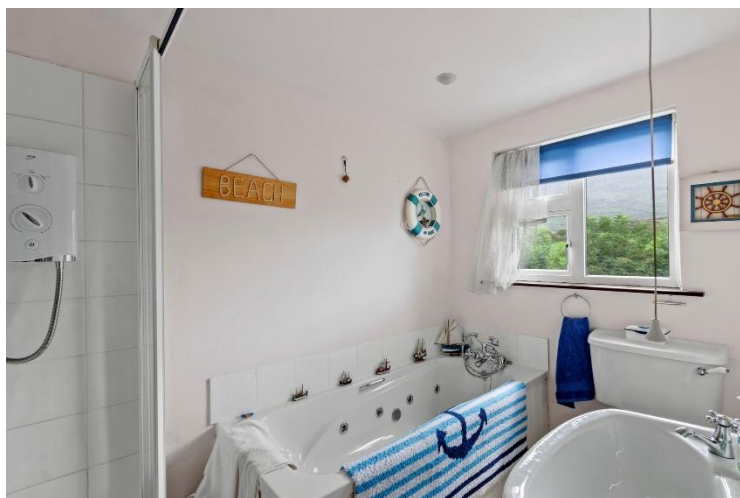
This unique home has been carefully restored to retain its original character while incorporating modern comforts. Features include highly insulated construction, beamed and vaulted ceilings, feature fireplaces with stove insets, wood and tile floors, double-glazed windows and individually styled rooms throughout. There is a choice of solid fuel or oil-fired central heating plus the option of electric underfloor heating downstairs.

The accommodation comprises an entrance hallway, sitting room, living room, open-plan kitchen and dining area, sunroom and guest W.C. on the ground floor. The sitting room on the ground floor can also be used as a fourth bedroom as it conveniently has its own door access to the guest WC. Upstairs are three double bedrooms, two with en-suite bathrooms, plus a separate family bathroom.

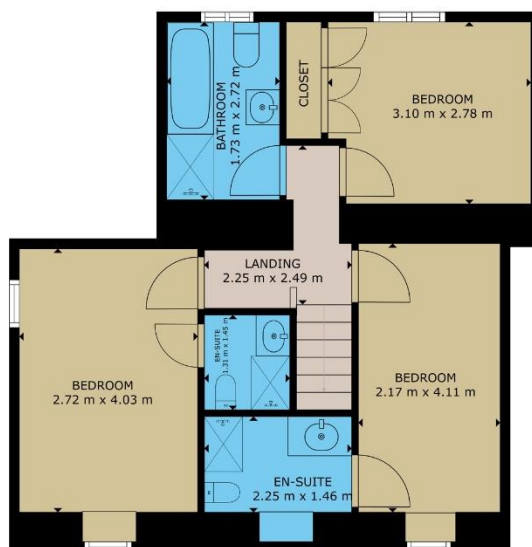
Set in a quiet location, the south-facing garden features a lawn area, mature trees, shrubs and hedges, creating a tranquil outdoor space. A small storage shed provides convenient space for garden tools.

The property is located on a by-road immediately adjacent to the Wild Atlantic Way, offering stunning coastal scenery, and is close to attractions such as the Cuas Pier Caves and the Pulleen Loop Walk. Several nearby shore angling spots, along with the village of Ardgroom providing a shop, café, bar and restaurant, make this an ideal location for both relaxation and recreation. The Beara Peninsula is renowned for its walking trails, historical and archaeological sites, and stunning coastal scenery. The principal town of Castletownbere is just a 10-minute drive away and serves as one of Europe's premier fishing hubs, offering excellent opportunities for sailing and angling enthusiasts.





GROUND FLOOR



FIRST FLOOR

GROSS INTERNAL AREA

TOTAL : 111.99m²

Whilst every attempt has been made to ensure the accuracy of the floor plan contained here, measurements of doors, windows, rooms and any other items are approximate and no responsibility is taken for any error, omission, or misstatement. This plan is for illustrative purposes only and should be used as such by any prospective purchaser.



**Sherry
FitzGerald**
O'Neill

NEGOTIATOR

Olivia Hanafin
Sherry FitzGerald O'Neill
Wolfe Tone Square
Co Cork
T: 027 31030
E: info@sfoneill.ie

VIEWINGS

Strictly By Appointment Only

ENERGY RATING

BER: D1
Cert No.: 118762160
EPI: 229.68 kWh/m²/yr

sherryfitz.ie
sfoneill.ie
myhome.ie
daft.ie

CONDITIONS TO BE NOTED: A full copy of our general brochure conditions can be viewed on our website at <http://www.sherryfitz.ie/terms>, or can be requested from your local Sherry FitzGerald office. We strongly recommend that you familiarise yourself with these general conditions. While care has been taken to ensure that information contained in Sherry FitzGerald publications is correct at the time of publication, changes in circumstances after the time of publication may impact on the accuracy of this. PSRA Registration No. 004158