



## ▼ Ground Floor

TOTAL AREA: 138.89 m<sup>2</sup> • LIVING AREA: 122.55 m<sup>2</sup> • ROOMS: 6



# Seapoint

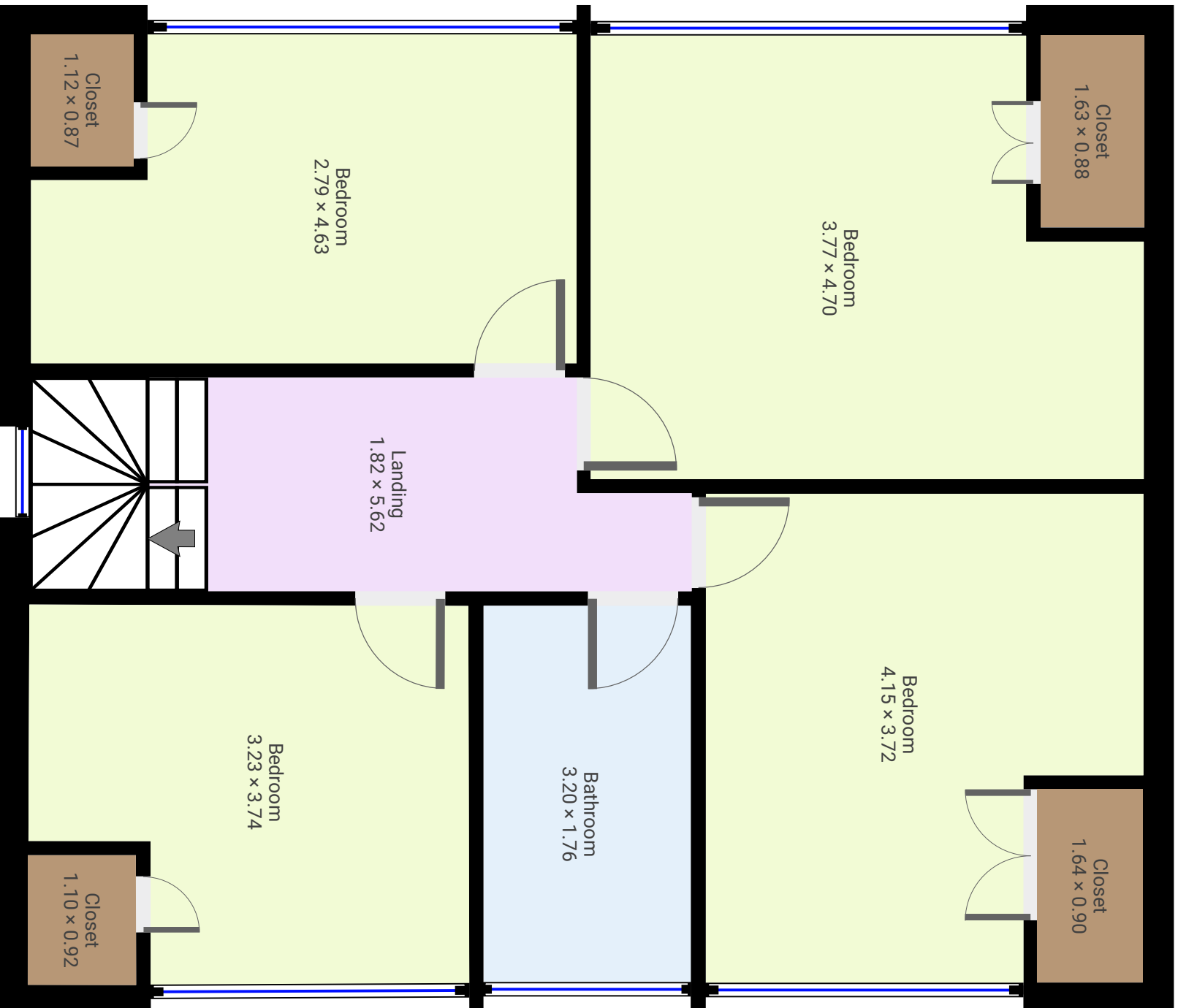


Seapoint, K32 FY56 Balbriggan, Co. Dublin, Ireland  
TOTAL AREA: 210.73 m<sup>2</sup> • LIVING AREA: 178.42 m<sup>2</sup> • FLOORS: 2 • ROOMS: 10

SUBMITTED BY Mark Newport  
marknewportphotography@gmail.com

## ▼ 1st Floor

TOTAL AREA: 71.84 m<sup>2</sup> • LIVING AREA: 55.87 m<sup>2</sup> • ROOMS: 4



THIS FLOORPLAN IS PROVIDED WITHOUT WARRANTY OF ANY KIND. SENSOPIA DISCLAIMS ANY WARRANTY INCLUDING, WITHOUT LIMITATION, SATISFACTORY QUALITY OR ACCURACY OF DIMENSIONS.