

Beautiful Victorian Period County Home on 13 Acres

Kilroan House, Brookhill, Glanmire, Co Cork, T45 RX48

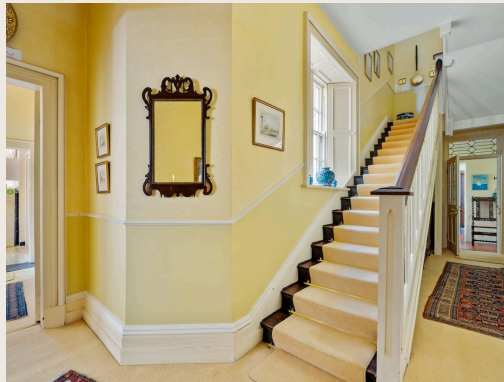
savills



Beautiful Victorian Period County Home on 13 Acres

Kilroan House, Brookhill, Glanmire, Co Cork, T45 RX48

savills



Beautiful Victorian Period County Home on 13 Acres

Kilroan House, Brookhill, Glanmire, Co Cork, T45 RX48



About this property

Savills are delighted to present Kilroan House, Glanmire – an exclusive and rare opportunity to acquire a magnificent ten-bedroom Victorian-era country residence set on approx. 13 acres of private, mature grounds. Built c.1880, this impressive home is rich in heritage and offers a serene, secluded lifestyle just 8km from Cork City.

Accessed via a beautiful gated entrance and a long avenue, the house is ideally positioned at the centre of the estate for maximum privacy. A charming one-bedroom gate lodge sits near the entrance, and a large gravelled forecourt provides generous parking. The grounds are adorned with mature trees, manicured lawns, a full-size tennis court, and a stunning garden with a greenhouse. Just beyond the Beech hedge walled garden, extending to the tree lined property boundary there is a woodland which has a carpet of bluebells every spring.

Inside, Kilroan House blends elegance with period detail. Climbing under lush wisteria, you enter a gracious hallway. To the left is a bright, dual-aspect sitting room with a marble fireplace and original cornicing. To the right, a large living room overlooks the sunny gardens. Continuing through the inner hall, the west-facing dining room is grand in scale and

also features decorative ceilings and a fireplace.

To the rear is a well-appointed kitchen overlooking the gardens, with a back hall leading to a pantry and the back stairs. Also on this floor is the original back kitchen, utility and guest WC. The home's first floor is equally spacious: the master bedroom offers wonderful south-west views, and a beautiful drawing room adds further living space. Three additional bedrooms are located off the main landing, while a bright corridor leads to six further bedrooms to the rear. In addition, there are two bathrooms on this floor. A secondary staircase links back to the ground floor, and many period features remain intact throughout. Of particular note, timbers from the SS Celtic, which ran aground in 1928 off Roches Point, were used in the rear bedrooms annex hall, doors and panelling – a unique historic detail.

Beautiful Victorian Period County Home on 13 Acres

Kilroan House, Brookhill, Glanmire, Co Cork, T45 RX48



Property Details

Outbuildings include a coach house, stable block with two stalls, a second stable in the field, wood stores, and workshop, offering excellent storage or future potential. The enclosed garden is bursting with mature plants and trees and is home to a wide collection of Rhododendrons, Azaleas, Japanese Acers, and Magnolia Trees amongst other plants of interest.

While the house would benefit from modernisation – it offers a blank canvas to create a truly special country home. Kilroan House is a rare find: a substantial period home on extensive grounds, only minutes from Glanmire village and just 700m from a city-bound bus stop.

Homes of this scale and setting so close to the city are exceptionally rare. There may also be long-term development potential (subject to planning), making this a remarkable investment opportunity as well as a dream home.



Beautiful Victorian Period County Home on 13 Acres

Kilroan House, Brookhill, Glanmire, Co Cork, T45 RX48

savills



Beautiful Victorian Period County Home on 13 Acres

Kilroan House, Brookhill, Glanmire, Co Cork, T45 RX48



Plans



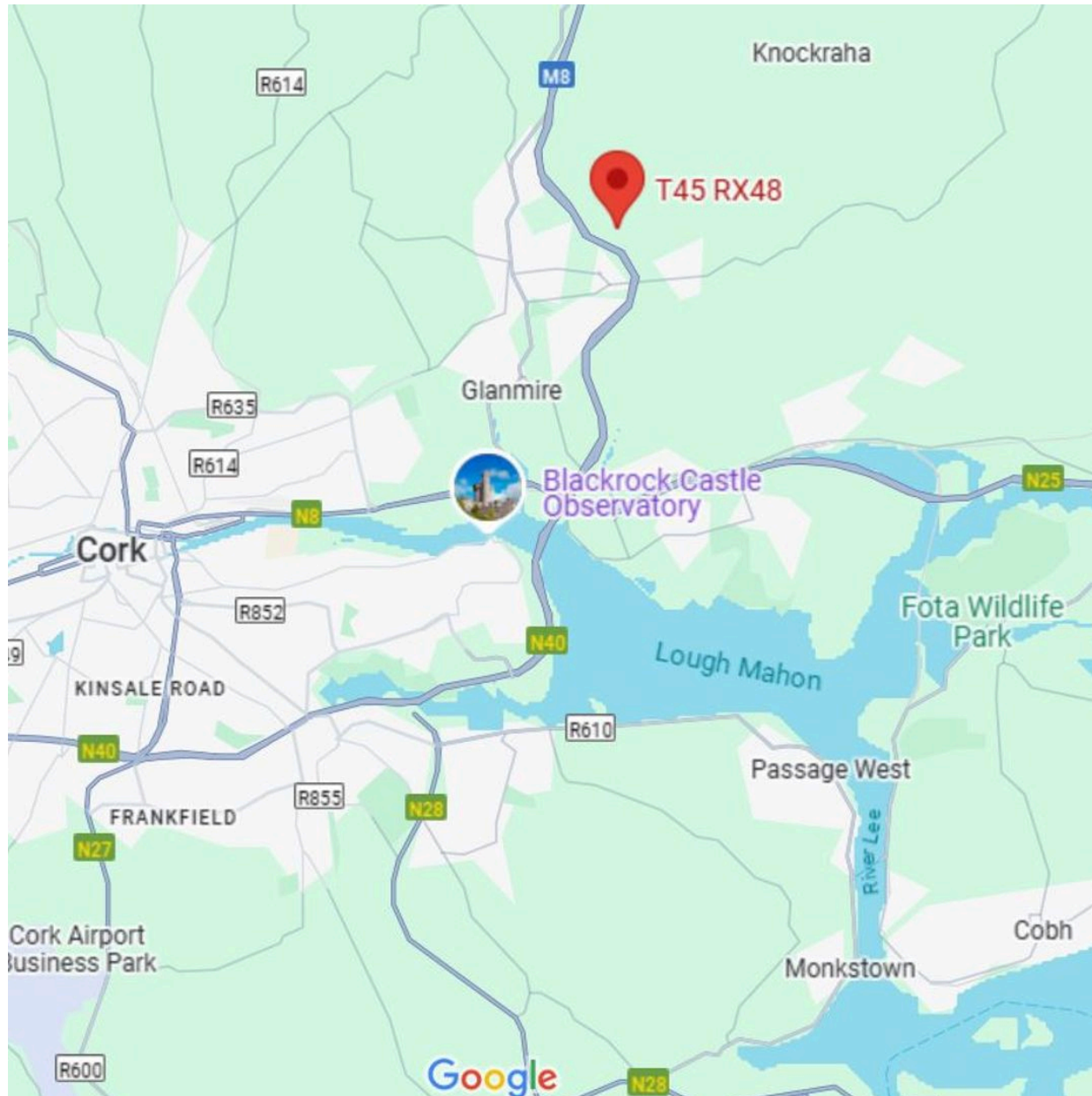
TOTAL: 440 m2
FLOOR 1: 194 m2; FLOOR 2: 246 m2
EXCLUDED AREAS (WORKSHOP, GARAGE, STABLES, STORAGE 1&2): 149 m2
Measurements Are Approximate. Floor Plan Is To Be Used For Illustrative Purposes Only



Beautiful Victorian Period County Home on 13 Acres

Kilroan House, Brookhill, Glanmire, Co Cork, T45 RX48

savills



Local Area

Amenities & Approx. Distances

Bus Stop to city centre - 700m

Glanmire Community College - 900m

Hazelwood Shopping Centre - 1.9km

Glanmire - 3km

Coláiste An Phiarsaigh - 3.2km

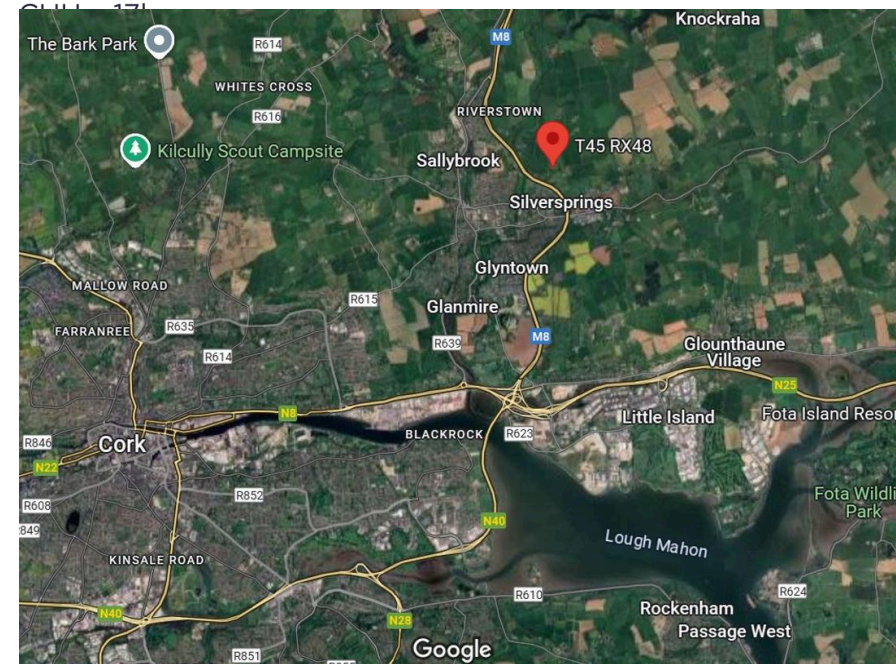
Kent Train Station - 8.8km

City Centre - 8km

Apple Holyhill - 12km

UCC - 12.6km

Fota Golf Course - 13km



Beautiful Victorian Period County Home on 13 Acres

Kilroan House, Brookhill, Glanmire, Co Cork, T45 RX48



Property Details

Key Features

Beautiful Victorian Period County Home

Approx. 440 sq m / 4,735 sq ft

Approx. 5.25 Ha / 13 acres private grounds

Additional garage, workshop, stores

Approx. 175 sq m / 1,880 sq ft

Landscaped garden / tennis court

One bedroom gate lodge

Extremely private mature grounds

Only 8km from Cork city centre

Services & Additional Information

Private well

Septic tank

OFCH

Original sash windows

Corniced ceilings and original fireplaces

Main and service stairs

Stables

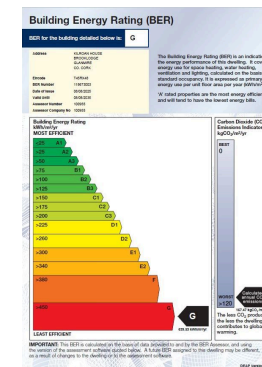
Selection of outhouses, workshop, garage

Highspeed broadband available in area

One bedroom gate lodge

BER

BER Rating = G



Local Authority

Cork County Council

Tenure

Freehold

Beautiful Victorian Period County Home on 13 Acres

Kilroan House, Brookhill, Glanmire, Co Cork, T45 RX48



Enquire



Lawrence Sweeney
Cork
+353 (0) 83 116 7163
lawrence.sweeney@savills.ie

More Information



[View on website](#)



[View Digital Brochure](#)



[Property Search](#)

Viewing strictly by appointment

Property Ref: CKK130007

Cork

Penrose House, Penrose Dock, T23 V38E
+353 (0) 21 427 1371



Important Notice: Savills, its clients and any joint agents give notice that 1: They are not authorised to make or give any representations or warranties in relation to the property either here or elsewhere, either on their own behalf or on behalf of their client or otherwise. They assume no responsibility for any statement that may be made in these particulars. These particulars do not form part of any offer or contract and must not be relied upon as statements or representations of fact. 2: Any areas, measurements or distances are approximate. The text, photographs and plans are for guidance only and are not necessarily comprehensive. It should not be assumed that the property has all necessary planning, building regulation or other consents and Savills have not tested any services, equipment or facilities. Purchasers must satisfy themselves by inspection or otherwise. *powered by* **FluoPro**