

For Sale

Asking Price: €95,000

**Sherry
FitzGerald**
O'Leary Kinsella



5A Lower Church St,
Enniscorthy, Co. Wexford,
Y21 H7N2



sherryfitz.ie



Compact mid terraced two story kerbside residence within walking distance of all amenities in the town, one bedroom, making it an ideal choice for first-time buyers or investors

The property is in need of some modernisation with the accommodation extending to 516 sq. ft. comprising sitting room, kitchen, one bedroom and en-suite. There is a small yard to the rear.

Situated on Lower Church St in the heart of Enniscorthy town only two minutes' walk from the town centre it enjoys an exceptional convenient location within close proximity of all amenities.



Accommodation

Living Room 4.63m x 2.22m (15'2" x 7'3"):

Kitchen/Dining Room 2.94m x 3.47m (9'8" x 11'5"):

1st Floor

Bedroom 1 3.75m x 2.23m (12'4" x 7'4"):

En-Suite 1.53m x 1.27m (5' x 4'2"): WC, W.H.B., shower

Special Features & Services

- Excellent location.
- Compact but good sized rooms.

Services

All mains services, fibre broadband available in the area, electric storage heating.



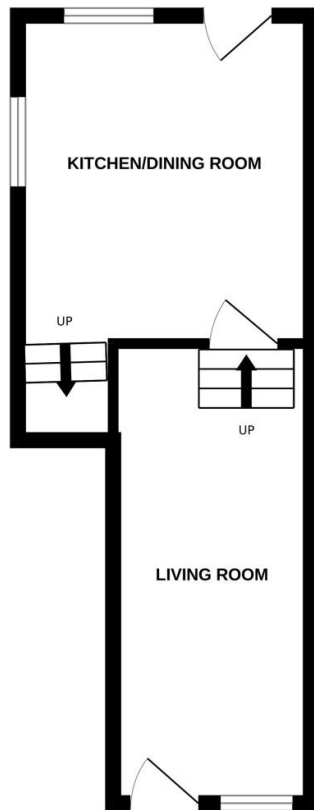
BER BER G, BER No. 118654250

Directions

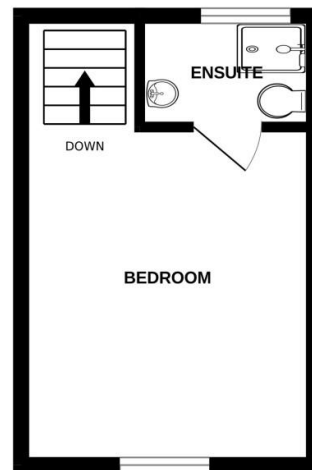
Y21 H7N2



GROUND FLOOR



1ST FLOOR



Whilst every attempt has been made to ensure the accuracy of the floorplan contained herein, measurements of doors, windows, rooms and any other items are approximate and no responsibility is taken for any error, omission or mis-statement. This plan is for illustrative purposes only and should be used as such by any prospective purchaser. The services, systems and appliances shown have not been tested and no guarantee as to their operability or efficiency can be given.
Made with Metropix ©2025



NEGOTIATOR
Sherry FitzGerald O'Leary
Kinsella
11 Slaney Street, Enniscorthy, Co
Wexford
T: 053 92 37322
E: sfol@wexproperty.ie

SOLICITOR

sherryfitz.ie

CONDITIONS TO BE NOTED: A full copy of our general brochure conditions can be viewed on our website at <http://www.sherryfitz.ie/terms>, or can be requested from your local Sherry FitzGerald office. We strongly recommend that you familiarise yourself with these general conditions. While care has been taken to ensure that information contained in Sherry FitzGerald publications is correct at the time of publication, changes in circumstances after the time of publication may impact on the accuracy of this. PSRA Registration No. 001510