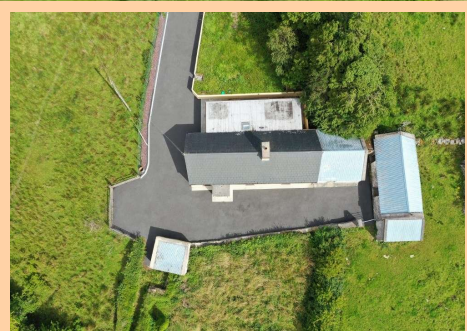


For Sale

Cottage On c. 14.80 Acres At,
Drumacoo, Ballaghaderreen
Co. Roscommon F45 HY95
3 Bedrooms| Cottage & Land



www.gonnaughtonauctioneers.ie



Offers in Excess of €120,000

Prime property to come to market comprising three bedroom cottage with extensive range of outbuildings altogether standing on c. 14.80 Acres, located at end of country lane on the Roscommon/Sligo/Mayo border. The cottage has unrivalled views of the surrounding countryside and just 15 minutes for Ireland West Airport Knock.

Cottage accommodation comprises reception hallway, living/dining room, kitchen, bedrooms three in all and bathroom.

The lands surround the cottage and outbuildings and are predominantly good quality.

To arrange a viewing, contact the office on 090-6663700



Reception Hallway

5'2" (1.57m) x 4'3" (1.3m) Upvc doorway to



Living/Dining Room

15'6" (4.72m) x 13'1" (3.99m) Stanley solid fuel stove with feature tiled outset, high ceiling with wooden finish, hotpress (airing cupboard) off

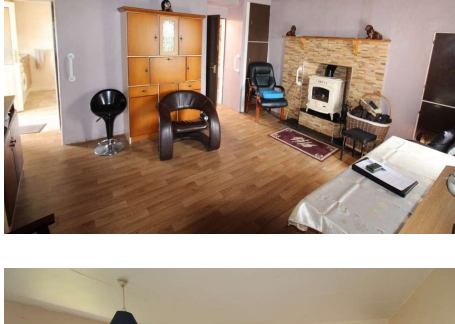


Kitchen

10'8" (3.25m) x 10'6" (3.2m) Fitted units, built in cooker, fridge freezer & washing machine, tiled floor, door to rear

Bedroom One

12'8" (3.86m) x 6'9" (2.06m) Carpeted



Bedroom Two

13'4" (4.06m) x 10'8" (3.25m) Carpeted



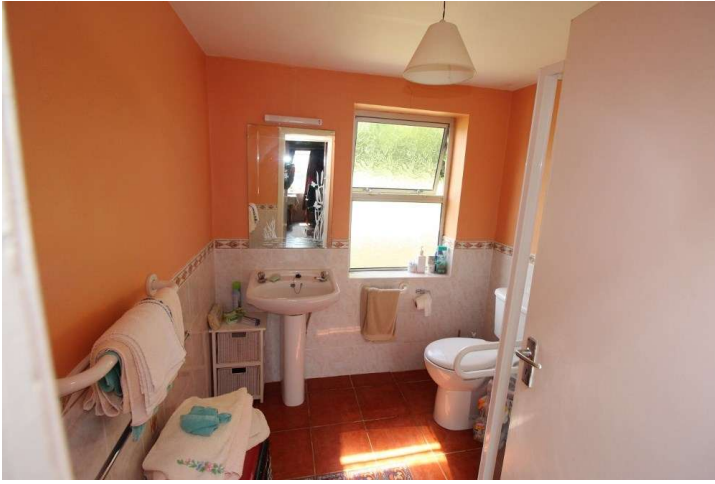
Bedroom Three

15'3" (4.65m) x 13'2" (4.01m) High ceiling with wooden finish



- Driveway tarmacadamed
- Laid lawn to rear of cottage
- Private well water, Septic tank
- Garage (Adjoining Cottage) 15'3" x 13'6" - Door to
- Turf Shed 33'9" x 14' - 3 bay, open front
- Cow house 17'8" x 11'10" - door to front & rear
- Stable 10'10" x 7' - door to
- Hen House 12' x 5'10"
- Two Bay Hay Shed 25'5" x 17'9"
- Pig House 10' x 7'9" - door to





Cottage On C. 14.80 Acres At, Drumacod, Ballaghaderreen, F45 HY95

