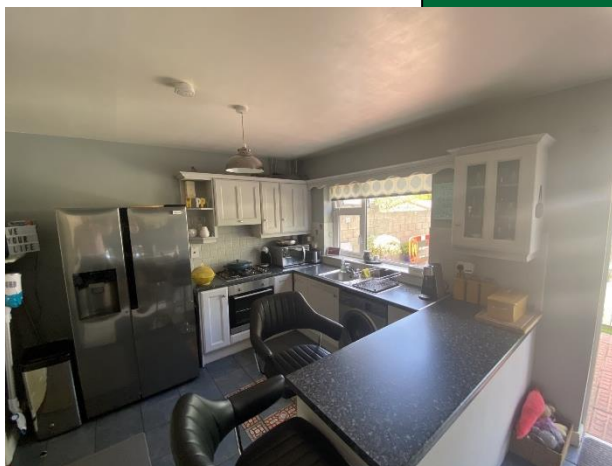




3 Rathmore, Churchill Meadows, Raheen,  
Limerick



Guide Price  
€270,000



GVM introduce to the market this immaculately  
maintained four bedroom two storey semi detached  
homes presented in turnkey condition.





This property enjoys all the benefits of proximity to fantastic amenities such as Raheen Business Park, The Crescent Shopping Centre, The University Hospital, excellent primary and secondary schools, wonderful sporting facilities, an excellent bus service together with quality restaurants, bars, chic coffee shops, gyms and hotels. The Motorway is also easily accessible. This property has been recently redecorated to very high standard and provides bright and well proportioned living and bedroom accommodation ideal for any discerning purchaser. Inspection is very highly recommended.

## Rooms:

Entrance Hallway

Tiled Flooring. Alarm point. Coving surround,

Sitting room

Carpet flooring. Bay window. TV point. Coving surround.

4.09m (13'5") x 3.02m (9'11")

Kitchen

Fully fitted kitchen. Built in oven and hob. Patio door to rear.

5.07m (16'8") x 3.02m (9'11")

Bathroom

Triton electric shower. Toilet and whb. Partly tiled

2.01m (6'7") x 1.09m (3'7")

Bedroom 1

Main bedroom. TV point. Timber flooring. Built in wardrobes. Ensuite :- Electric shower fitted.

3.09m (10'2") x 3.05m (10'0")

Bedroom 2

Single bedroom. Timber flooring.

2.05m (6'9") x 2.05m (6'9")



### Bedroom 3

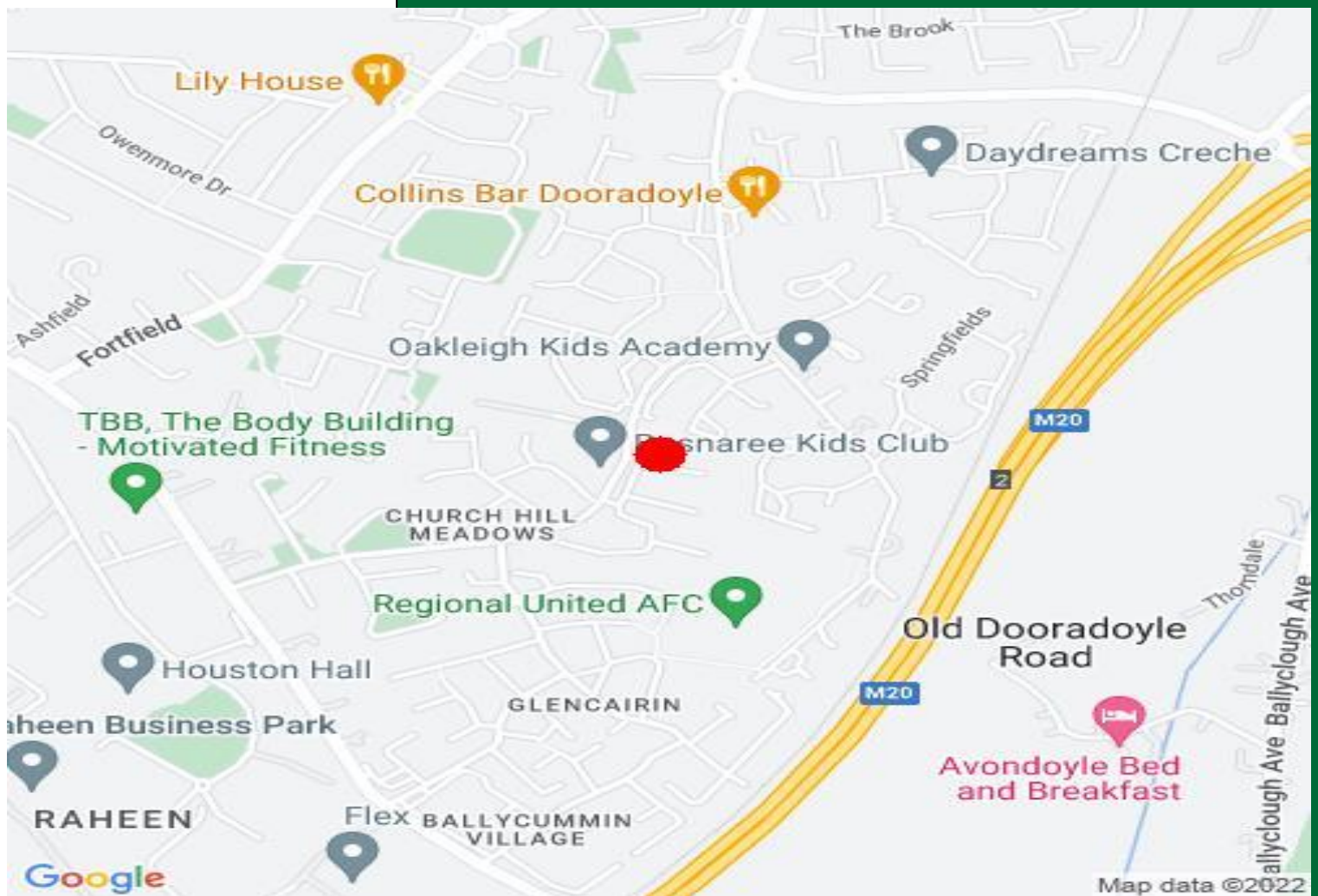
Double bedroom. Timber flooring. Built in wardrobes.

2.08m (6'10") x 3.04m (10'0")

### Features:

- ✓ Gas fired central heating
- ✓ Situated in a quiet cul de sac
- ✓ Double glazed UPVC windows
- ✓ Easy access to Motorway and national road network
- ✓ Walking distance to Crescent Shopping Centre, The University Hospital and Raheen Industrial Estate
- ✓ Established and much sought after residential area
- ✓ Regular bus service
- ✓ Wonderful local walkways and cycle lanes
- ✓ Tremendous Primary and Secondary Schools nearby
- ✓ Five minutes drive to Mungret Recreation Park





### Directions:

Enter Eircode V94W5DW to your mobile device to bring you straight to the door of this property.

### Agent Information

John O'Connell

[johnoconnell@gvm.ie](mailto:johnoconnell@gvm.ie)

087-6470746



PSRA Number: 002030

#### Limerick Office

25-26 Glentworth St,  
Co. Limerick,  
V94T6C9

Phone:  
(061)413522  
Email:  
limerick@gvm.ie

#### Kilmallock Office

Head Office,  
Railway Road  
Kilmallock, Co. Limerick

Phone:  
(063)98555  
Email:  
kilmallock@gvm.ie

#### Tullamore Office

GVM Mart,  
Arden Road  
Tullamore, Co. Offaly

Phone:  
(057)9321196  
Email:  
tullamoreproperty@gvm.ie