



Derelict Farm House & Out Buildings

On C. 1.4 Acres / 0.56 Ha., Kilbaylet, Donard, Co. Wicklow.



90 sq.m



(045) 865 568



www.jpmdoyle.ie

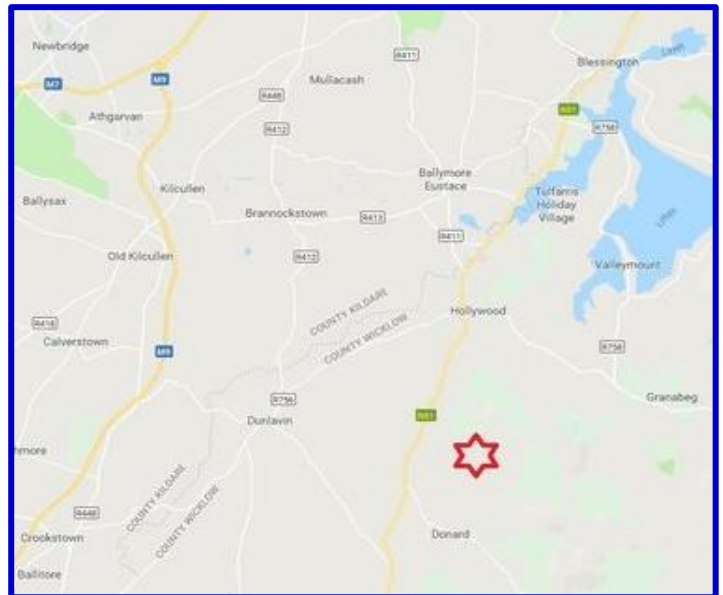
For Sale by Private Treaty

LOCATION:

This property is situated in the beautiful Wicklow countryside, near the picturesque villages of Donard and Hollywood. Nestled into the foothills of the Wicklow Mountains, it is located in an area of outstanding beauty, while remaining within easy commuting distance of Dublin and surrounds.

Donard Village offers a host of amenities including a shop, a pub, a school and churches with a variety of sporting facilities on your doorstep and many walks close by. The towns of Baltinglass and Blessington are within easy reach.

Donard: 3.3 km Hollywood: 7km Baltinglass: 16 km Dublin: 45 km.



DESCRIPTION:

The property comprises of an old world, period Stone cottage in need of repair, and an extensive farm yard, set on an elevated site with exceptional views. The cottage, which is in need of major refurbishment, extends to c. 90 sq.ms / 970 sq.ft. The yard comprises of a fully slatted four bay cattle shed, a three bay hay barn, and a silage pit.

ACCOMMODATION:

Derelict Stone Residence: Old World Cottage in need of Renovation:
c. 90 Sq. Mts. laid out in Four Rooms and Loft.



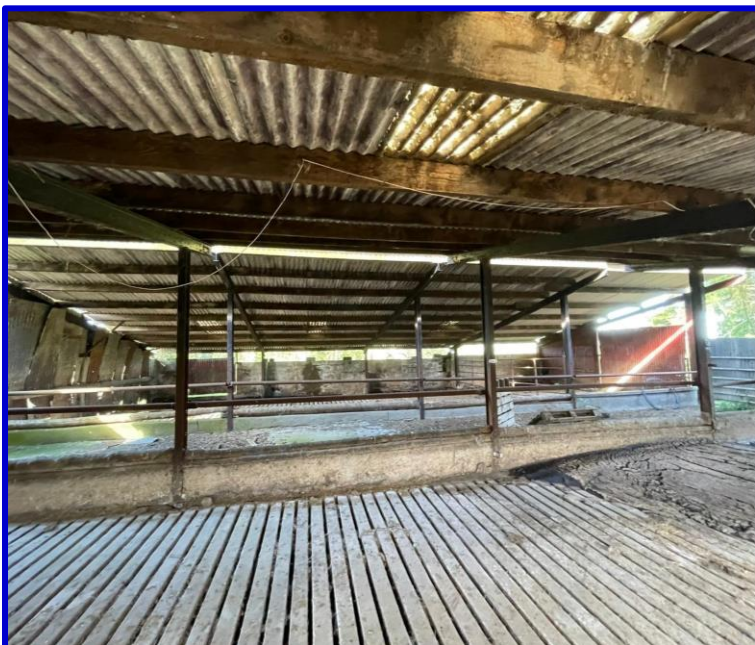


Cattle Shed:

4 Bay Cattle Shed fitted with Slatted Units: c. 350 Sq. Mts.

Hay Barn:

3 Bay Hay Barn: c. c 126 Sq. Mts.





VIEWING:

BY APPOINTMENT ONLY

BER:

EXEMPT

PRICE REGION:

€195,000



JP&M
DOYLE

Established. 1952

Main Street, Blessington, Co. Wicklow, W91 RK28.

t: (045) 865568

f: (045) 891425

e: blessington@jpmdoyle.ie

PSRA Licence: 002264

J.P. & M. Doyle Ltd., for themselves and for the vendors of this property whose agents they are, give notice that:

- (1) the particulars are set out as a general outline for the guidance of intending purchasers and do not constitute part of an offer or contract.
- (2) all description, dimensions, references to condition and necessary permission of use and occupation, and other details are given in good faith and are believed to be correct, but any intending purchasers or tenants should not rely on them as statements or representations of fact but must satisfy themselves by inspection or otherwise as to the correctness of each of them.
- (3) no person in the employment of J.P. & M. Doyle Ltd. has any authority to make or give any representations or warranty whatever in relation to the property.