

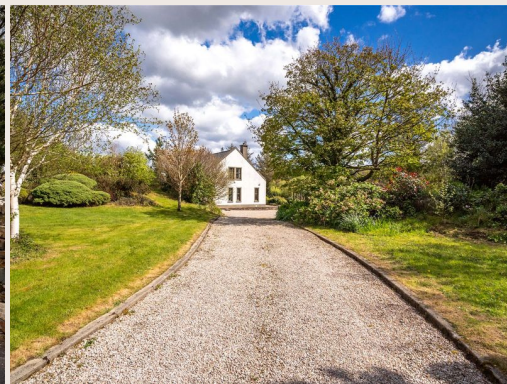
# A stunning 4-bedroom home overlooking Sessiagh Lough

Rinnaraw, Portnablagh, Co. Donegal, F92 R2R3



# A stunning 4-bedroom home overlooking Sessiagh Lough

Rinnaraw, Portnablagh, Co. Donegal, F92 R2R3



# A stunning 4-bedroom home overlooking Sessiagh Lough

Rinnaraw, Portnablagh, Co. Donegal, F92 R2R3



## About this property

Rinnaraw is a truly stunning home in a private setting offering wonderful views across Sessiagh Lough. Built in 1995, the house offers comfortable accommodation laid out over two levels, suitable for modern-day family living, and enjoys a south-facing situation overlooking the water and the surrounding hillside landscape.

Accessed off the Rockhill road, the attractive stone wall entrance leads onto a private driveway which approaches the house with a parking area to the side of the house. A welcoming main hallway features a skylight and offers access to a study, ground floor bedroom and a wc. A doorway off here opens into the bright living/dining room which exudes a blend of rustic charm and contemporary style. This room features an open fireplace adorned with flagstones reclaimed from a shipwreck off Horn Head.

Off the kitchen/living room is a kitchen with an AGA. An inner hallway off the kitchen accesses the back hall which features a rod room, sunroom, storage room, utility room and a wc.

Ascending to the first floor, there is a spacious landing which offers

wonderful views of the lough and is perfect for use as a playroom or a cozy reading corner. The master bedroom features fitted wardrobes and an ensuite. There are also two further bedrooms and a family bathroom. In all the accommodation extends to about 2,486 sq ft/ 231 sq m, with a full layout shown on the adjoining floorplans.

# A stunning 4-bedroom home overlooking Sessiagh Lough

Rinnaraw, Portnablagh, Co. Donegal, F92 R2R3



## Property Details

### Outbuildings

There is a large shed to the side of the house (extending to about 613 sq ft / 57 sqm), ideal for a car or boat storage.

### Gardens & Grounds

A standout feature of Rinnaraw is the exquisite garden grounds. The house sits amidst wonderful mature grounds which are tranquil and consist mainly of amenity grass land and woodland providing good shelter. A raised vegetable garden is in the front garden while the south facing garden enjoys a wonderful setting overlooking Sessiagh Lough.

In all the grounds extend to about 1.1 acres/0.45 hectare.



# A stunning 4-bedroom home overlooking Sessiagh Lough

Rinnaraw, Portnablagh, Co. Donegal, F92 R2R3




# A stunning 4-bedroom home overlooking Sessiagh Lough

Rinnaraw, Portnablagh, Co. Donegal, F92 R2R3



## Plans

 2,486 sq ft

 1 acres

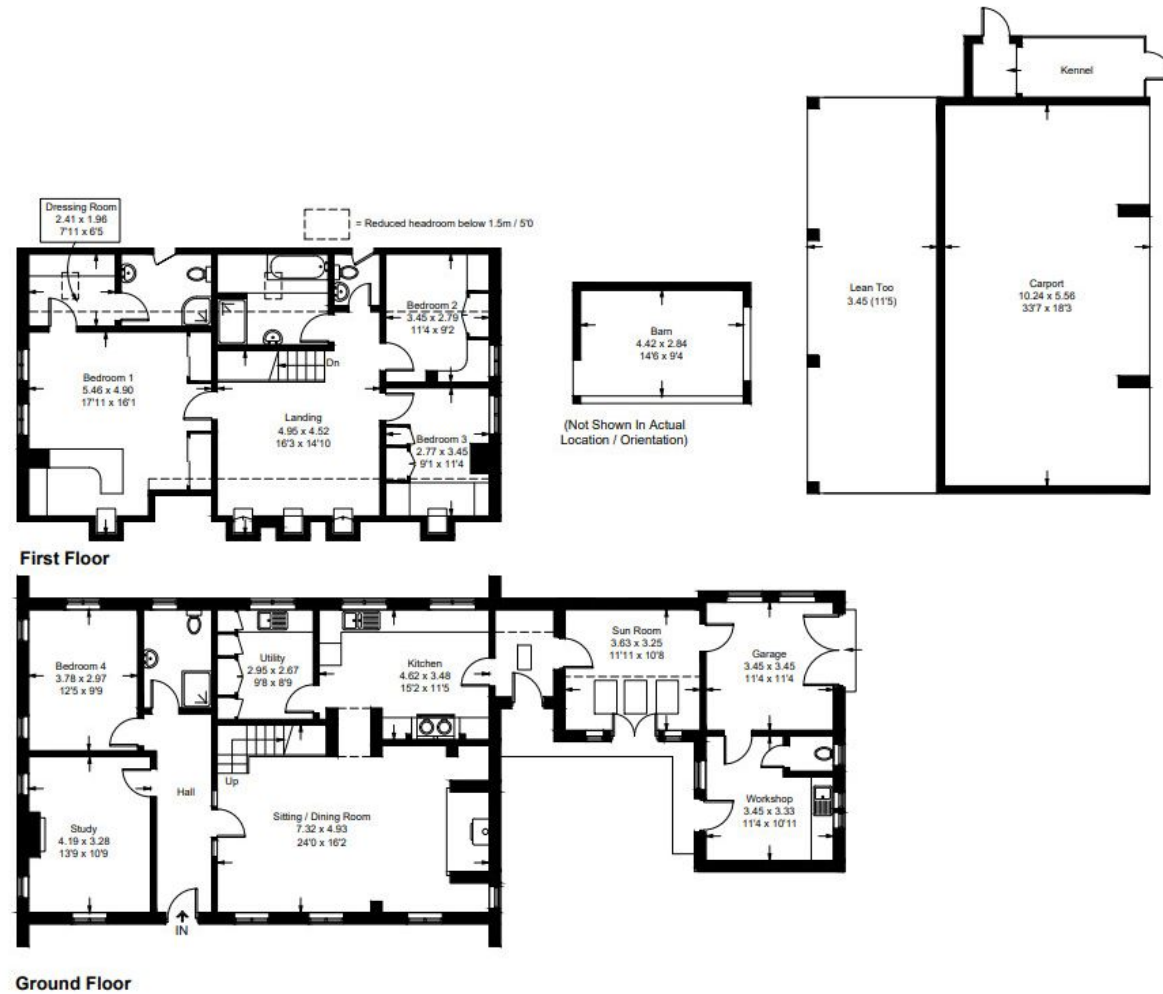


Illustration for identification purposes only, measurements are approximate, not to scale. floorplansUsketch.com © (ID1078423)

# A stunning 4-bedroom home overlooking Sessiagh Lough

Rinnaraw, Portnablagh, Co. Donegal, F92 R2R3



## Local Area

County Donegal is located on the north-westerly tip of Ireland and is considered one of Ireland's most beautiful and unspoilt counties which is renowned for its history, heritage and landscape.

The popular fishing village of Portnablagh (1 km) is convenient for local services with the towns of Dunfanaghy (2.5 km). Letterkenny (32 km) provides further amenities including shops, banks, and restaurant.



# A stunning 4-bedroom home overlooking Sessiagh Lough

Rinnaraw, Portnablagh, Co. Donegal, F92 R2R3



## Property Details

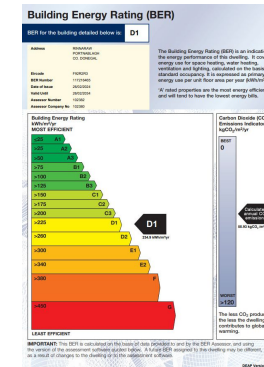
### Key Features

- Wonderful setting overlooking Sessiagh Lough
- Situated in the popular village of Portnablagh
- About 1.1 acres
- Large shed
- Exquisite garden grounds

### Services & Additional Information

### BER

BER Rating = D1



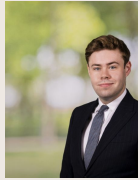


# A stunning 4-bedroom home overlooking Sessiagh Lough

Rinnaraw, Portnablagh, Co. Donegal, F92 R2R3



## Enquire



### Liam McCarthy

Dublin - Residential & Country Agency

+353 83 878 4989

liam.mccarthy@savills.ie

## More Information



[View on website](#)



[View Digital Brochure](#)



[Property Search](#)

**Viewing strictly by appointment**

Property Ref: DUY240045



Important Notice: Savills, its clients and any joint agents give notice that 1: They are not authorised to make or give any representations or warranties in relation to the property either here or elsewhere, either on their own behalf or on behalf of their client or otherwise. They assume no responsibility for any statement that may be made in these particulars. These particulars do not form part of any offer or contract and must not be relied upon as statements or representations of fact. 2: Any areas, measurements or distances are approximate. The text, photographs and plans are for guidance only and are not necessarily comprehensive. It should not be assumed that the property has all necessary planning, building regulation or other consents and Savills have not tested any services, equipment or facilities. Purchasers must satisfy themselves by inspection or otherwise. *powered by* **FluxPro**