



Apartment 12, Parkton House, Parnell Road, Enniscorthy, Wexford

Asking Price: €165,000



BER D2

DOUGLAS NEWMAN GOOD
DNG
O'CONNOR & O'CONNOR

DESCRIPTION

Parkton House exudes elegance and grandeur, and it is no surprise that this ground floor apartment is of a similar style. No. 12 Parkton is a very well-proportioned 1 bed ground floor apartment and is part of similar apartments within the confines of this turn of the century building. The building was converted in c. 2005 and enjoys an excellent location.

Located on Parnell Road in the centre of Enniscorthy town, just a gentle stroll from all amenities, including primary and secondary schools, library, hotels, leisure centres and an array of retail shops and restaurants to name but a few. Enniscorthy town is steeped in history with a wealth of culture and historical sites within the town surrounds.

Parkton, is now a mix of terraced town houses and apartments, and is a very well presented and maintained town development.

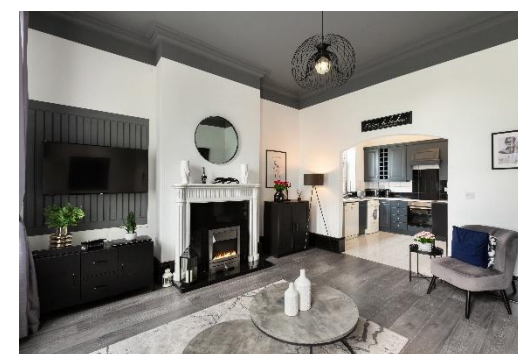
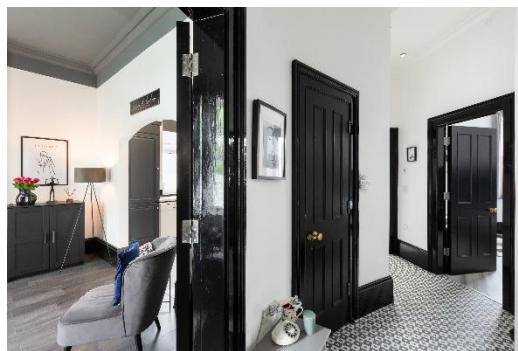
The apartment is beautifully presented, with all the old charm and features of the original building, high ceilings and large Georgian windows and many high-quality finishes throughout.

Briefly comprising of communal entrance lobby, private entrance hallway, living room, kitchen, shower room, and 1 double bedroom. Parkton house is approached by private entrance walls and piers and tarmacadam drive leading to the main building with ample designated parking.

ACCOMMODATION

Entrance Hall 5.36m x 3.06m (17'7" x 10'). Step into a bright and welcoming entrance hallway featuring elegant patterned porcelain floor tiles and striking black woodwork that highlights a stylish curved wall. Decorative coving adds a touch of classic charm, creating a space that perfectly blends contemporary design with timeless detail.

Living Room 4.17m x 4.60m (13'8" x 15'1"). A large, bright, and spacious open-plan living area, designed for both comfort and style. Featuring warm timber laminate flooring and a striking marble fireplace with black hearth surround and gas fire, this room exudes a cosy yet modern feel. The soft grey ceiling with decorative coving adds depth and warmth, while two generously sized front-facing windows flood the space with natural light. An elegant archway leads





seamlessly into the kitchen, enhancing the open flow of the home.

Kitchen 2.99m x 2.53m (9'10" x 8'4"). A stylish and functional space featuring tiled flooring and a modern grey shaker-style kitchen with sleek laminate countertops. Equipped with an electric oven and hob, this kitchen is perfect for everyday cooking and entertaining. A side-facing window provides natural light, while decorative coving adds a subtle touch of elegance.



Bathroom 3.80m x 2.36m (12'6" x 7'9"). A bright and generously sized bathroom featuring tiled flooring and partially tiled walls adorned with stylish mosaic accents. Includes a WC, wash hand basin, and an electric shower. A striking painted feature wall adds a modern, artistic touch, enhancing the overall sense of space and light.

Bedroom 4.77m x 4.35m (15'8" x 14'3"). A bright and spacious bedroom with warm timber laminate flooring and elegant coving. Built-in wardrobes provide ample storage, while decorative panelling behind the bed creates a stylish feature wall, adding character and charm to this comfortable retreat.



BER DETAILS

BER: D2

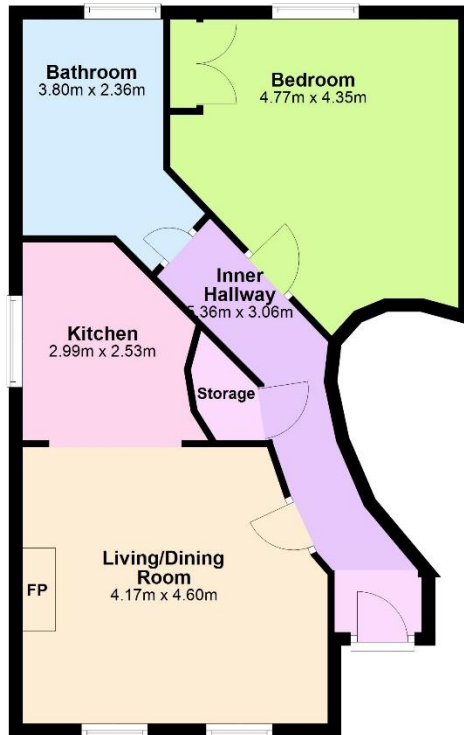
BER No: 112425327

Energy Performance Indicator: 299.33 kWh/m2/yr

ASKING PRICE

Asking Price: €165,000

Ground Floor



Total area: approx. 60.0 sq. metres

FURTHER INFORMATION/VIEWING

By appointment with the sole selling agent DNG. For further information please contact:

Michelle Conroy
053 93 77147
info@dngoconnoranddoconnor.ie



PSL No. 004577

DNG O'Connor and O'Connor for themselves and for the vendors or lessors of the property whose Agents they are, give notice that: (i) The particulars are set out as a general outline for the guidance of intending purchasers or lessees, and do not constitute part of, an offer or contract. (ii) Any intending purchasers or tenants must not rely the descriptions, dimensions, references to condition nor necessary permissions for use and occupation as statements or representations of fact but must satisfy themselves by inspection or otherwise as to the correctness of each of them. (iii) No person in the employment of DNG O'Connor and O'Connor has any authority to make or give representation or warranty whatsoever in relation to this development. DNG O'Connor and O'Connor accept no liability (including liability to any prospective purchaser or lessee by reason of negligence or negligent misstatement) for loss or damage caused by any statements, opinions, information or other matters (expressed or implied) arising out of, contained in or derived from, or for any omissions from this brochure.