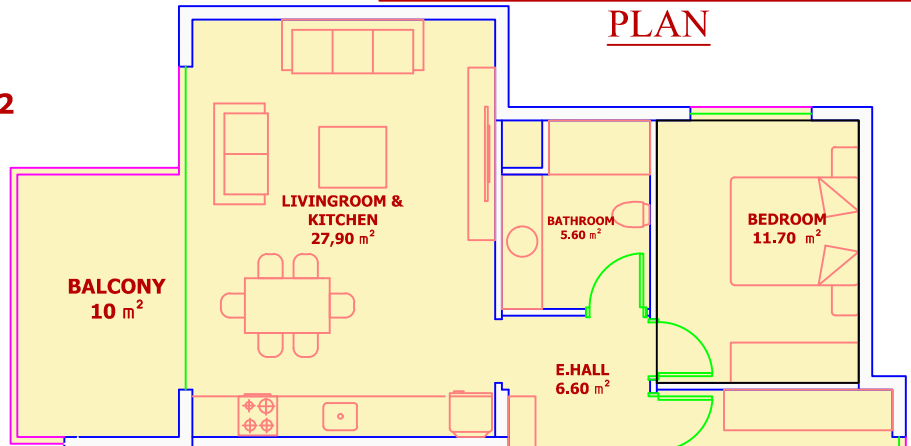


0-1-2-3-4-5- FLOOR

PLAN

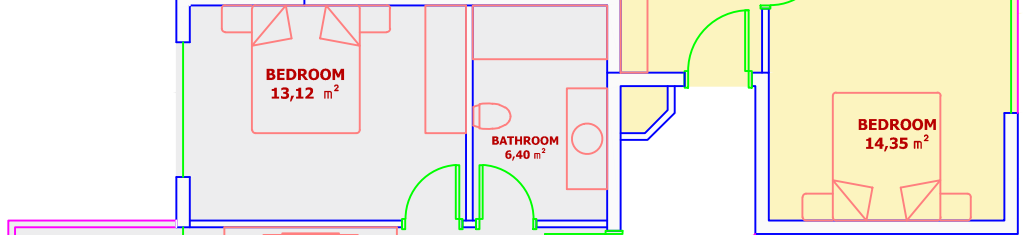
(2+1)
NO:1-5-9-13-17-21
GROSS FIGURE :96,41 M2

LIVINGROOM & KITCHEN :27,90M2
BEDROOM :11,70 M2
BEDROOM :14,35 M2
BATHROOM :5,60 M2
E.HALL :6,60 M2
BALCONY :10,00 M2
WALL :10,26 M2
CORIDOR-STAIR-LIFT :10,00 M2



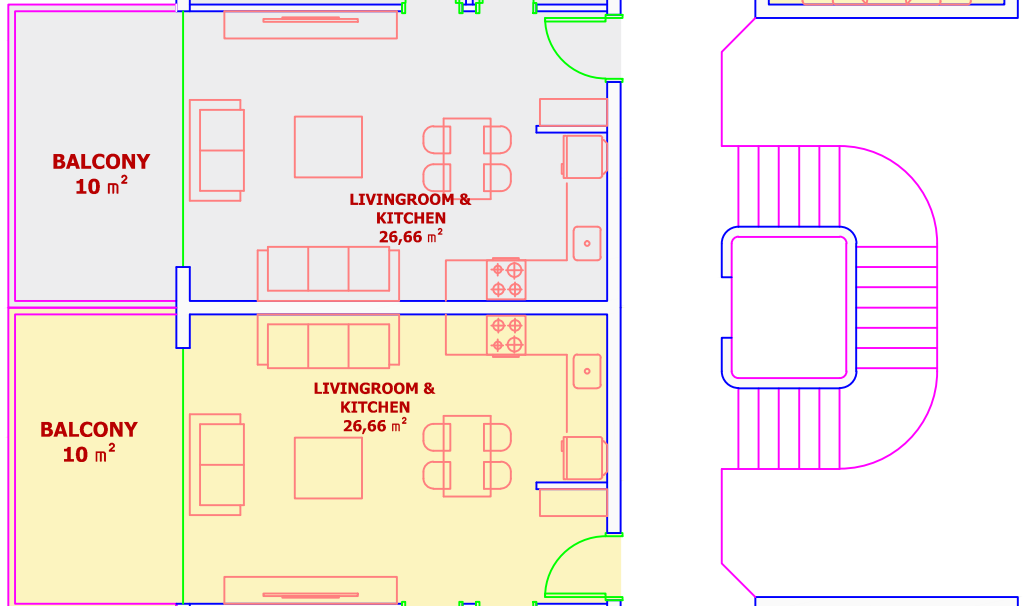
(1+1)
NO:2-6-10-14-18-22
GROSS FIGURE :70,38 M2

LIVINGROOM & KITCHEN:26,66 M2
BEDROOM :13,12 M2
BATHROOM :6,40 M2
BALCONY :10,00 M2
WALL :6,55 M2
CORIDOR-STAIR-LIFT :7,65 M2



(1+1)
NO:3-7-11-15-19-23
GROSS FIGURE :70,38 M2

LIVINGROOM & KITCHEN:26,66 M2
BEDROOM :13,12 M2
BATHROOM :6,40 M2
BALCONY :10,00 M2
WALL :6,55 M2
CORIDOR-STAIR-LIFT :7,65 M2



(2+1)
NO:4-8-12-16-20-24
GROSS FIGURE :96,41 M2

LIVINGROOM & KITCHEN :27,90M2
BEDROOM :11,70 M2
BEDROOM :14,35 M2
BATHROOM :5,60 M2
E.HALL :6,60 M2
BALCONY :10,00 M2
WALL :10,26 M2
CORIDOR-STAIR-LIFT :10,00 M2

